



[Go to Product page](#)

Datasheet for ABIN7156326
anti-IGFL3 antibody (AA 25-125)

1 Image

Overview

Quantity:	100 µL
Target:	IGFL3
Binding Specificity:	AA 25-125
Reactivity:	Human
Host:	Rabbit
Clonality:	Polyclonal
Conjugate:	This IGFL3 antibody is un-conjugated
Application:	ELISA, Immunohistochemistry (IHC)

Product Details

Immunogen:	Recombinant Human Insulin growth factor-like family member 3 protein (25-125AA)
Isotype:	IgG
Cross-Reactivity:	Human
Purification:	Antigen Affinity Purified

Target Details

Target:	IGFL3
Alternative Name:	IGFL3 (IGFL3 Products)
Background:	Background: Potential ligand of the IGFLR1 cell membrane receptor. Aliases: IGF like family member 3 antibody, IGFL3 antibody, IGFL3_HUMAN antibody, Insulin

Target Details

growth factor-like family member 3 antibody, RPRC483 antibody, UNQ483 antibody

UniProt: [Q6UXB1](#)

Application Details

Application Notes: Recommended dilution: IHC:1:20-1:200,

Restrictions: For Research Use only

Handling

Format: Liquid

Buffer: PBS with 0.02 % sodium azide, 50 % glycerol, pH 7.3.

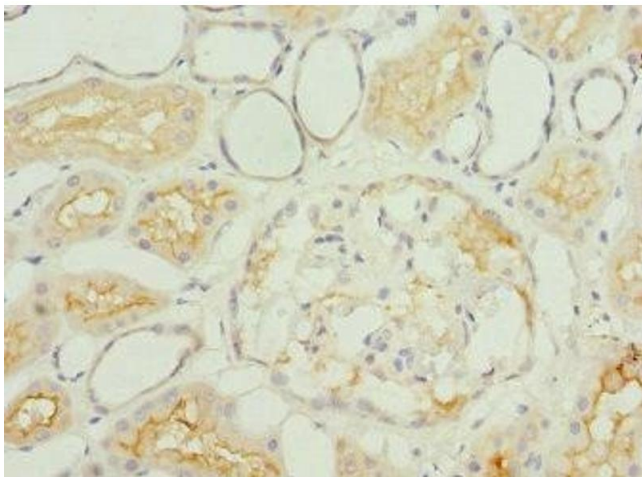
Preservative: Sodium azide

Precaution of Use: This product contains Sodium azide: a POISONOUS AND HAZARDOUS SUBSTANCE which should be handled by trained staff only.

Storage: -20 °C,-80 °C

Storage Comment: Upon receipt, store at -20°C or -80°C. Avoid repeated freeze.

Images



Immunohistochemistry

Image 1. Immunohistochemistry of paraffin-embedded human kidney tissue using ABIN7156326 at dilution of 1:100