



[Go to Product page](#)

Datasheet for ABIN7156335  
**anti-IRS1 antibody (AA 1-160)**

2 Images

Overview

Quantity:	100 µL
Target:	IRS1
Binding Specificity:	AA 1-160
Reactivity:	Human
Host:	Rabbit
Clonality:	Polyclonal
Conjugate:	This IRS1 antibody is un-conjugated
Application:	Immunohistochemistry (IHC), ELISA

Product Details

Immunogen:	Recombinant Human Insulin receptor substrate 1 protein (1-160AA)
Isotype:	IgG
Cross-Reactivity:	Human
Purification:	Antigen Affinity Purified

Target Details

Target:	IRS1
Alternative Name:	IRS1 ( <a href="#">IRS1 Products</a> )
Background:	Background: May mediate the control of various cellular processes by insulin. When phosphorylated by the insulin receptor binds specifically to various cellular proteins containing

## Target Details

---

SH2 domains such as phosphatidylinositol 3-kinase p85 subunit or GRB2. Activates phosphatidylinositol 3-kinase when bound to the regulatory p85 subunit.

Aliases: HIRS 1 antibody, HIRS1 antibody, Insulin receptor substrate 1 antibody, IRS 1 antibody, IRS-1 antibody, IRS1 antibody, IRS1\_HUMAN antibody, OTTHUMP00000164234 antibody

---

UniProt: [P35568](#)

---

Pathways: [Fc-epsilon Receptor Signaling Pathway](#), [EGFR Signaling Pathway](#), [Neurotrophin Signaling Pathway](#), [Positive Regulation of Peptide Hormone Secretion](#), [Hormone Transport](#), [Negative Regulation of Hormone Secretion](#), [Response to Growth Hormone Stimulus](#), [Carbohydrate Homeostasis](#), [Regulation of Carbohydrate Metabolic Process](#)

---

## Application Details

---

Application Notes: Recommended dilution: IHC:1:20-1:200,

---

Restrictions: For Research Use only

---

## Handling

---

Format: Liquid

---

Buffer: PBS with 0.02 % sodium azide, 50 % glycerol, pH 7.3.

---

Preservative: Sodium azide

---

Precaution of Use: This product contains Sodium azide: a POISONOUS AND HAZARDOUS SUBSTANCE which should be handled by trained staff only.

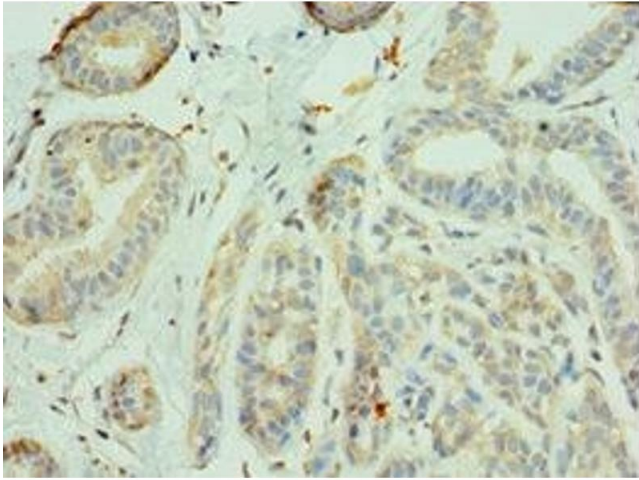
---

Storage: -20 °C,-80 °C

---

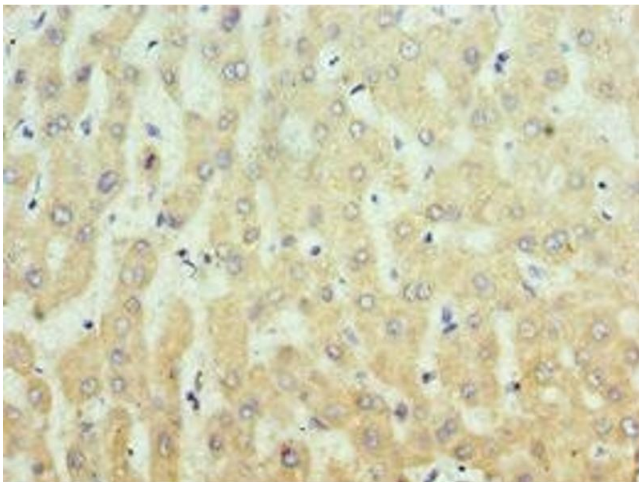
Storage Comment: Upon receipt, store at -20°C or -80°C. Avoid repeated freeze.

---



#### Immunohistochemistry

**Image 1.** Immunohistochemistry of paraffin-embedded human breast cancer using ABIN7156335 at dilution of 1:100



#### Immunohistochemistry

**Image 2.** Immunohistochemistry of paraffin-embedded human liver tissue using ABIN7156335 at dilution of 1:100