

Datasheet for ABIN7156360
anti-IGF2BP3 antibody (AA 1-100)

4 Images

[Go to Product page](#)

Overview

Quantity:	100 µg
Target:	IGF2BP3
Binding Specificity:	AA 1-100
Reactivity:	Human
Host:	Rabbit
Clonality:	Polyclonal
Conjugate:	This IGF2BP3 antibody is un-conjugated
Application:	Western Blotting (WB), Immunohistochemistry (IHC), ELISA, Immunofluorescence (IF)

Product Details

Immunogen:	Recombinant Human Insulin-like growth factor 2 mRNA-binding protein 3 protein (1-100AA)
Isotype:	IgG
Cross-Reactivity:	Human, Mouse
Purification:	>95%, Protein G purified

Target Details

Target:	IGF2BP3
Alternative Name:	IGF2BP3 (IGF2BP3 Products)
Background:	Background: RNA-binding factor that may recruits target transcripts to cytoplasmic protein-RNA complexes (mRNPs). This transcript is caged into mRNPs allows mRNA transport

Target Details

and transient storage. It also modulates the rate and location at which target transcripts encounter the translational apparatus and shields them from endonuclease attacks or microRNA-mediated degradation. Binds to the 3'-UTR of CD44 mRNA and stabilizes it, hence promotes cell adhesion and invadopodia formation in cancer cells. Binds to beta-actin/ACTB and MYC transcripts. Binds to the 5'-UTR of the insulin-like growth factor 2 (IGF2) mRNAs. Aliases: Cancer/testis antigen 98 antibody, CT98 antibody, DKFZp686F1078 antibody, hKOC antibody, IF2B3_HUMAN antibody, IGF II mRNA binding protein 3 antibody, IGF-II mRNA-binding protein 3 antibody, IGF2 mRNA binding protein 3 antibody, IGF2 mRNA-binding protein 3 antibody, IGF2BP3 antibody, IMP 3 antibody, IMP-3 antibody, Insulin like growth factor 2 mRNA binding protein 3 antibody, Insulin-like growth factor 2 mRNA-binding protein 3 antibody, KH domain containing protein overexpressed in cancer antibody, KH domain-containing protein overexpressed in cancer antibody, KOC 1 antibody, KOC1 antibody, VICKZ 3 antibody, VICKZ family member 3 antibody, VICKZ3 antibody

UniProt: [O00425](#)

Application Details

Application Notes: Recommended dilution: WB:1:500-1:5000, IHC:1:20-1:200, IF:1:50-1:200,

Restrictions: For Research Use only

Handling

Format: Liquid

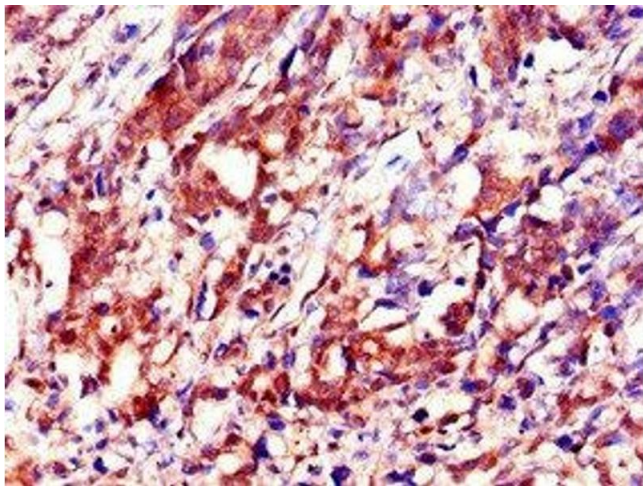
Buffer: Preservative: 0.03 % Proclin 300
Constituents: 50 % Glycerol, 0.01M PBS, PH 7.4

Preservative: ProClin

Precaution of Use: This product contains ProClin: a POISONOUS AND HAZARDOUS SUBSTANCE which should be handled by trained staff only.

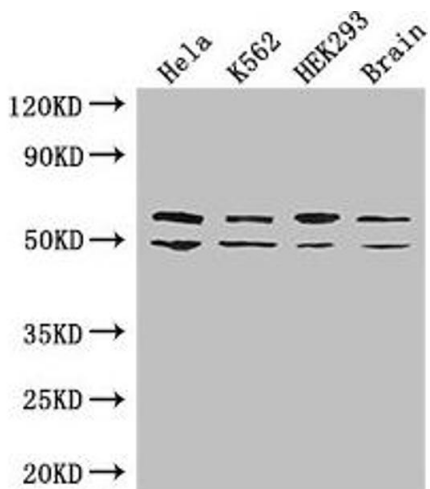
Storage: -20 °C,-80 °C

Storage Comment: Upon receipt, store at -20°C or -80°C. Avoid repeated freeze.



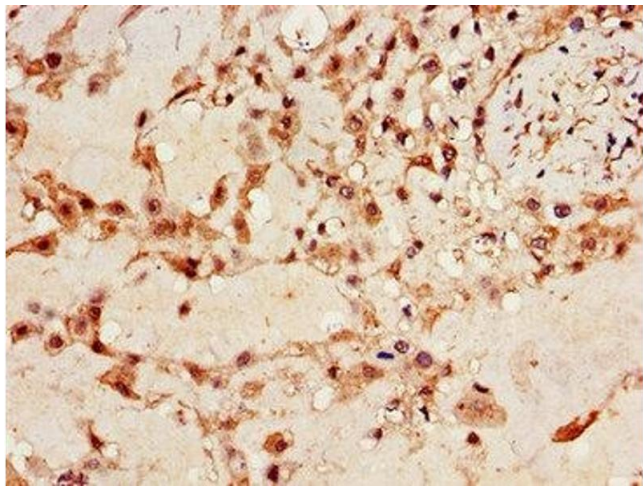
Immunohistochemistry

Image 1. Immunohistochemistry of paraffin-embedded human gastric cancer using ABIN7156360 at dilution of 1:100



Western Blotting

Image 2. Western Blot Positive WB detected in: HeLa whole cell lysate, K562 whole cell lysate, HEK293 whole cell lysate, Mouse brain tissue All lanes: IGF2BP3 antibody at 2 µg/mL Secondary Goat polyclonal to rabbit IgG at 1/50000 dilution Predicted band size: 64, 22 kDa Observed band size: 64, 50 kDa



Immunohistochemistry

Image 3. Immunohistochemistry of paraffin-embedded human placenta tissue using ABIN7156360 at dilution of 1:100

Please check the [product details page](#) for more images. Overall 4 images are available for ABIN7156360.