



[Go to Product page](#)

Datasheet for ABIN7156368
anti-IGFBPI antibody (AA 26-259)

2 Images

Overview

Quantity:	100 µg
Target:	IGFBPI
Binding Specificity:	AA 26-259
Reactivity:	Human
Host:	Rabbit
Clonality:	Polyclonal
Conjugate:	This IGFBPI antibody is un-conjugated
Application:	Western Blotting (WB), ELISA, Immunohistochemistry (IHC)

Product Details

Immunogen:	Recombinant Human Insulin-like growth factor-binding protein 1 protein (26-259AA)
Isotype:	IgG
Cross-Reactivity:	Human
Purification:	>95%, Protein G purified

Target Details

Target:	IGFBPI
Alternative Name:	IGFBP1 (IGFBPI Products)
Background:	Background: IGF-binding proteins prolong the half-life of the IGFs and have been shown to either inhibit or stimulate the growth promoting effects of the IGFs on cell culture. They alter the

Target Details

interaction of IGFs with their cell surface receptors. Promotes cell migration.

Aliases: AFBP antibody, Alpha pregnancy associated endometrial globulin antibody, Amniotic fluid binding protein antibody, Binding protein 25 antibody, Binding protein 26 antibody, Binding protein 28 antibody, Growth hormone independent binding protein antibody, hIGFBP 1 antibody, hIGFBP1 antibody, IBP 1 antibody, IBP-1 antibody, IBP1 antibody, IBP1_HUMAN antibody, IGF binding protein 1 antibody, IGF BP25 antibody, IGF-binding protein 1 antibody, IGFBP 1 antibody, IGFBP-1 antibody, IGFBP1 antibody, Insulin like growth factor binding protein 1 antibody, Insulin-like growth factor-binding protein 1 antibody, Placental protein 12 antibody, PP 12 antibody, PP12 antibody

UniProt: [P08833](#)

Pathways: [Myometrial Relaxation and Contraction](#), [ER-Nucleus Signaling](#), [Growth Factor Binding](#)

Application Details

Application Notes: Recommended dilution: WB:1:500-1:2000, IHC:1:20-1:200,

Restrictions: For Research Use only

Handling

Format: Liquid

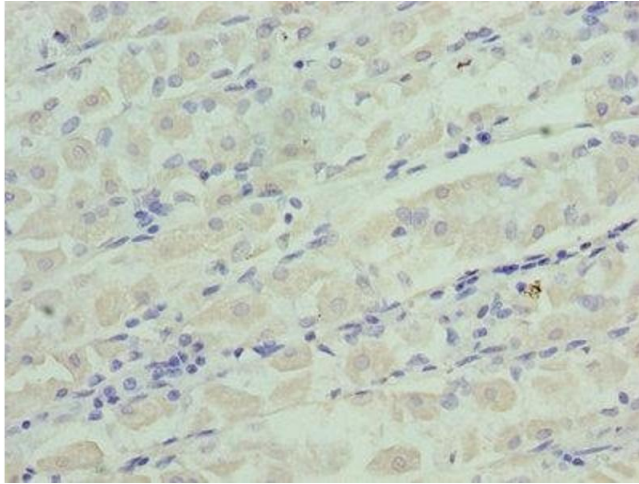
Buffer: Preservative: 0.03 % Proclin 300
Constituents: 50 % Glycerol, 0.01M PBS, PH 7.4

Preservative: ProClin

Precaution of Use: This product contains ProClin: a POISONOUS AND HAZARDOUS SUBSTANCE which should be handled by trained staff only.

Storage: -20 °C,-80 °C

Storage Comment: Upon receipt, store at -20°C or -80°C. Avoid repeated freeze.



Immunohistochemistry

Image 1. Immunohistochemistry of paraffin-embedded human gastric cancer using ABIN7156368 at dilution of 1:100



Western Blotting

Image 2. Western blot All lanes: IGFBP1 antibody at 3 μ g/mL Lane 1: A549 whole cell lysate Lane 2: PC-3 whole cell lysate Secondary Goat polyclonal to rabbit IgG at 1/10000 dilution Predicted band size: 28 kDa Observed band size: 28 kDa