



[Go to Product page](#)

Datasheet for ABIN7156393
anti-INTS1 antibody (AA 451-710)

3 Images

Overview

Quantity:	100 µL
Target:	INTS1
Binding Specificity:	AA 451-710
Reactivity:	Human
Host:	Rabbit
Clonality:	Polyclonal
Conjugate:	This INTS1 antibody is un-conjugated
Application:	ELISA, Western Blotting (WB), Immunohistochemistry (IHC)

Product Details

Immunogen:	Recombinant Human Integrator complex subunit 10 protein (451-710AA)
Isotype:	IgG
Cross-Reactivity:	Human, Mouse, Rat
Purification:	Antigen Affinity Purified

Target Details

Target:	INTS1
Alternative Name:	INTS1 (INTS1 Products)
Background:	Background: Component of the Integrator complex, a complex involved in the small nuclear RNAs (snRNA) U1 and U2 transcription and in their 3' UTR-dependent processing. The

Target Details

Integrator complex is associated with the C-terminal domain (CTD) of RNA polymerase II largest subunit (POLR2A) and is recruited to the U1 and U2 snRNAs genes.

Aliases: INTS10 antibody, C8orf35 antibody, Integrator complex subunit 10 antibody, Int10 antibody

UniProt: [Q9NVR2](#)

Application Details

Application Notes: Recommended dilution: WB:1:1000-1:5000, IHC:1:20-1:200,

Restrictions: For Research Use only

Handling

Format: Liquid

Buffer: PBS with 0.02 % sodium azide, 50 % glycerol, pH 7.3.

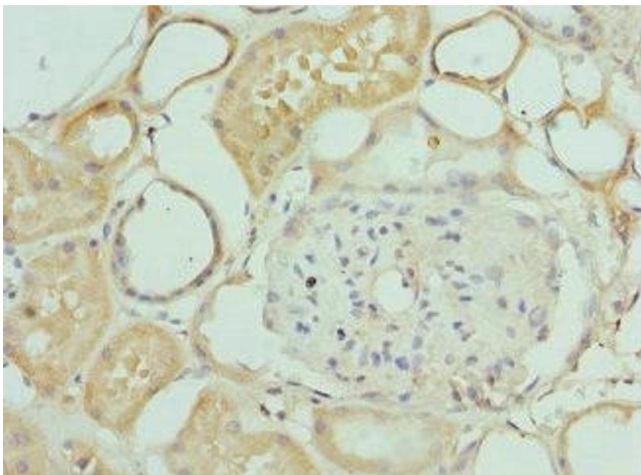
Preservative: Sodium azide

Precaution of Use: This product contains Sodium azide: a POISONOUS AND HAZARDOUS SUBSTANCE which should be handled by trained staff only.

Storage: -20 °C,-80 °C

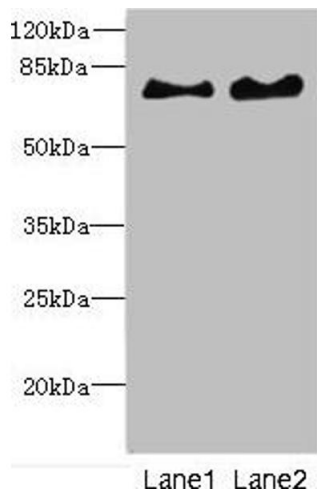
Storage Comment: Upon receipt, store at -20°C or -80°C. Avoid repeated freeze.

Images



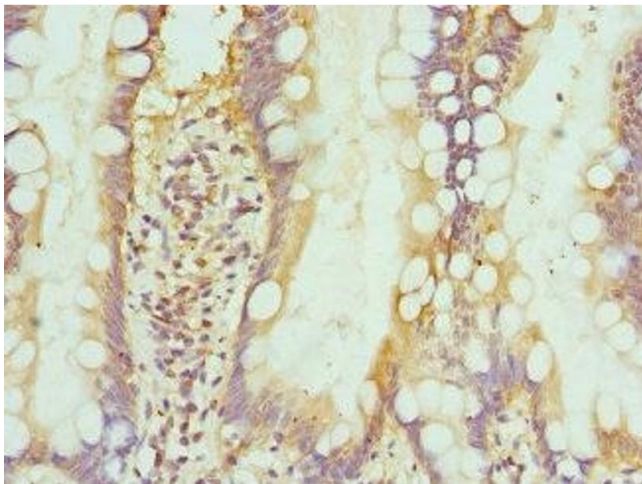
Immunohistochemistry

Image 1. Immunohistochemistry of paraffin-embedded human kidney tissue using ABIN7156393 at dilution of 1:100



Western Blotting

Image 2. Western blot All lanes: INTS10 antibody at 4.35 μ g/mL Lane 1: Mouse kidney tissue Lane 2: Rat gonadal tissue Secondary Goat polyclonal to rabbit IgG at 1/10000 dilution Predicted band size: 82 kDa Observed band size: 82 kDa



Immunohistochemistry

Image 3. Immunohistochemistry of paraffin-embedded human small intestine tissue using ABIN7156393 at dilution of 1:100