



[Go to Product page](#)

Datasheet for ABIN7156430
anti-ITGA2 antibody (AA 188-365)

2 Images

Overview

Quantity:	100 µg
Target:	ITGA2
Binding Specificity:	AA 188-365
Reactivity:	Human
Host:	Rabbit
Clonality:	Polyclonal
Conjugate:	This ITGA2 antibody is un-conjugated
Application:	Immunohistochemistry (IHC), ELISA, Immunofluorescence (IF)

Product Details

Immunogen:	Recombinant Human Integrin alpha-2 protein (188-365AA)
Isotype:	IgG
Cross-Reactivity:	Human
Purification:	>95%, Protein G purified

Target Details

Target:	ITGA2
Alternative Name:	ITGA2 (ITGA2 Products)
Background:	Background: Integrin alpha-2/beta-1 is a receptor for laminin, collagen, collagen C-propeptides, fibronectin and E-cadherin. It recognizes the proline-hydroxylated sequence G-F-P-G-E-R in

Target Details

collagen. It is responsible for adhesion of platelets and other cells to collagens, modulation of collagen and collagenase gene expression, force generation and organization of newly synthesized extracellular matrix.

Aliases: BR antibody, CD 49b antibody, CD49 antigen like family member B antibody, CD49 antigen-like family member B antibody, CD49b antibody, CD49b antigen antibody, Collagen receptor antibody, DX5 antibody, Glycoprotein Ia deficiency included antibody, GP Ia antibody, GP Ia deficiency, included antibody, GPIa antibody, HPA 5 included antibody, HPA5 included antibody, Human platelet alloantigen system 5 antibody, Integrin alpha 2 antibody, Integrin alpha II antibody, Integrin alpha-2 antibody, Integrin, alpha 2 (CD49B alpha 2 subunit of VLA 2 receptor) antibody, ITA2_HUMAN antibody, ITGA2 antibody, Platelet alloantigen Br(a), included antibody, Platelet antigen Br antibody, Platelet glycoprotein GPIa antibody, Platelet glycoprotein Ia antibody, Platelet glycoprotein Ia/IIa antibody, Platelet membrane glycoprotein Ia antibody, Platelet receptor for collagen, deficiency of, included antibody, Very late activation protein 2 receptor alpha 2 subunit antibody, VLA 2 alpha chain antibody, VLA 2 antibody, VLA 2 subunit alpha antibody, VLA-2 subunit alpha antibody, VLA2 antibody, VLA2 receptor alpha 2 subunit antibody, VLAA2 antibody

UniProt: [P17301](#)

Pathways: [CXCR4-mediated Signaling Events](#), [Smooth Muscle Cell Migration](#), [Integrin Complex](#)

Application Details

Application Notes: Recommended dilution: IHC:1:20-1:200, IF:1:50-1:500,

Restrictions: For Research Use only

Handling

Format: Liquid

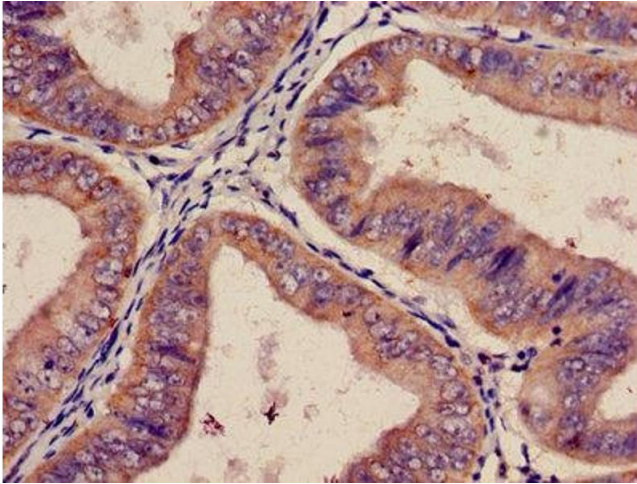
Buffer: Preservative: 0.03 % Proclin 300
Constituents: 50 % Glycerol, 0.01M PBS, PH 7.4

Preservative: ProClin

Precaution of Use: This product contains ProClin: a POISONOUS AND HAZARDOUS SUBSTANCE which should be handled by trained staff only.

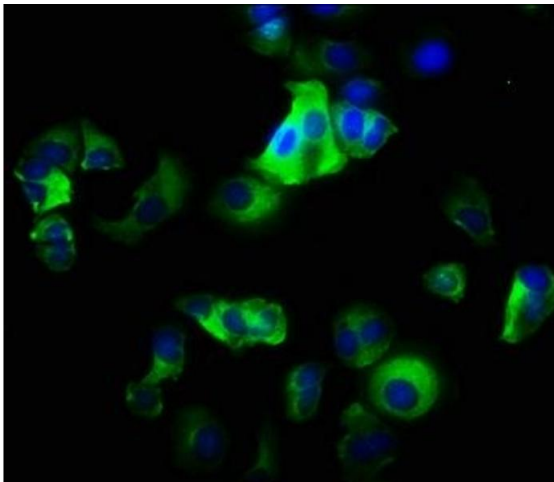
Storage: -20 °C,-80 °C

Storage Comment: Upon receipt, store at -20°C or -80°C. Avoid repeated freeze.



Immunohistochemistry

Image 1. Immunohistochemistry of paraffin-embedded human endometrial cancer using ABIN7156430 at dilution of 1:100



Immunofluorescence

Image 2. Immunofluorescence staining of MCF-7 cells with ABIN7156430 at 1:200, counter-stained with DAPI. The cells were fixed in 4% formaldehyde, permeabilized using 0.2% Triton X-100 and blocked in 10% normal Goat Serum. The cells were then incubated with the antibody overnight at 4°C. The secondary antibody was Alexa Fluor 488-conjugated AffiniPure Goat Anti-Rabbit IgG(H+L).