

Datasheet for ABIN7156434
anti-ITGA3 antibody (AA 168-276)

2 Images

[Go to Product page](#)

Overview

Quantity:	100 µg
Target:	ITGA3
Binding Specificity:	AA 168-276
Reactivity:	Human
Host:	Rabbit
Clonality:	Polyclonal
Conjugate:	This ITGA3 antibody is un-conjugated
Application:	ELISA, Immunohistochemistry (IHC), Immunofluorescence (IF)

Product Details

Immunogen:	Recombinant Human Integrin alpha-3 protein (168-276AA)
Isotype:	IgG
Cross-Reactivity:	Human
Purification:	>95%, Protein G purified

Target Details

Target:	ITGA3
Alternative Name:	ITGA3 (ITGA3 Products)
Background:	Background: Integrin alpha-3/beta-1 is a receptor for fibronectin, laminin, collagen, epiligrin, thrombospondin and CSPG4. Integrin alpha-3/beta-1 provides a docking site for FAP (seprase)

Target Details

at invadopodia plasma membranes in a collagen-dependent manner and hence may participate in the adhesion, formation of invadopodia and matrix degradation processes, promoting cell invasion. Alpha-3/beta-1 may mediate with LGALS3 the stimulation by CSPG4 of endothelial cells migration.

Aliases: AA407068 antibody, Antigen identified by monoclonal antibody J143 antibody, CD49 antigen like family member C antibody, CD49 antigen-like family member C antibody, CD49c antibody, CD49c antigen antibody, FLJ34631 antibody, FLJ34704 antibody, FRP 2 antibody, FRP-2 antibody, FRP2 antibody, Galactoprotein B3 antibody, GAP B3 antibody, GAPB3 antibody, Integrin alpha 3 antibody, Integrin alpha-3 light chain antibody, Integrin, alpha 3 (antigen CD49C, alpha 3 subunit of VLA-3 receptor) antibody, ITA3_HUMAN antibody, ITGA 3 antibody, Itga3 antibody, MSK18 antibody, VCA 2 antibody, VCA2 antibody, Very late activation protein 3 receptor alpha 3 subunit antibody, VL3A antibody, VLA 3 alpha chain antibody, VLA 3 subunit alpha antibody, VLA-3 subunit alpha antibody, VLA3a antibody

UniProt: [P26006](#)

Pathways: [CXCR4-mediated Signaling Events](#), [Integrin Complex](#)

Application Details

Application Notes: Recommended dilution: IHC:1:200-1:500, IF:1:50-1:200,

Restrictions: For Research Use only

Handling

Format: Liquid

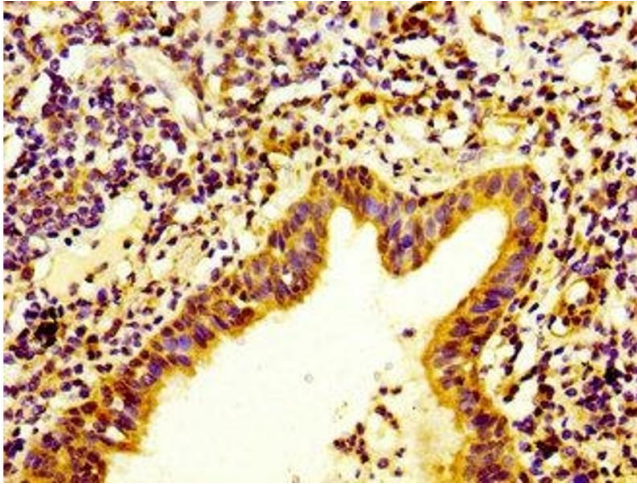
Buffer: Preservative: 0.03 % Proclin 300
Constituents: 50 % Glycerol, 0.01M PBS, pH 7.4

Preservative: ProClin

Precaution of Use: This product contains ProClin: a POISONOUS AND HAZARDOUS SUBSTANCE which should be handled by trained staff only.

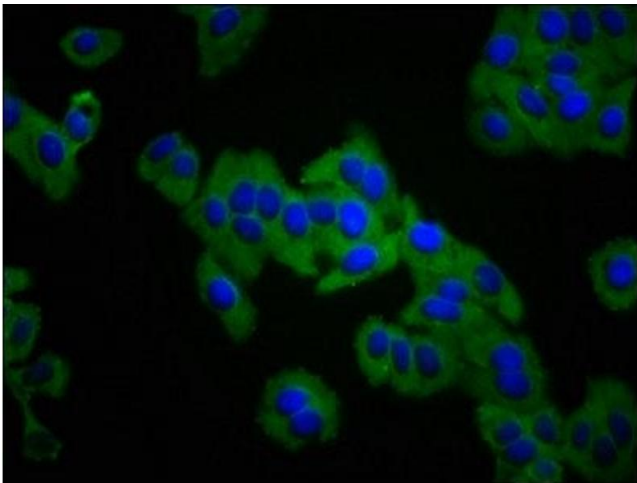
Storage: -20 °C,-80 °C

Storage Comment: Upon receipt, store at -20°C or -80°C. Avoid repeated freeze.



Immunohistochemistry

Image 1. IHC image of ABIN7156434 diluted at 1:400 and staining in paraffin-embedded human lung cancer performed on a Leica Bond™ system. After dewaxing and hydration, antigen retrieval was mediated by high pressure in a citrate buffer (pH 6.0). Section was blocked with 10% normal goat serum 30min at RT. Then primary antibody (1% BSA) was incubated at 4°C overnight. The primary is detected by a biotinylated secondary antibody and visualized using an HRP conjugated SP system.



Immunofluorescence

Image 2. Immunofluorescence staining of HepG2 cells with ABIN7156434 at 1:133, counter-stained with DAPI. The cells were fixed in 4% formaldehyde, permeabilized using 0.2% Triton X-100 and blocked in 10% normal Goat Serum. The cells were then incubated with the antibody overnight at 4°C. The secondary antibody was Alexa Fluor 488-conjugated AffiniPure Goat Anti-Rabbit IgG(H+L).