

Datasheet for ABIN7156446
anti-ITGA6 antibody (AA 625-866)

2 Images

[Go to Product page](#)

Overview

Quantity:	100 µg
Target:	ITGA6
Binding Specificity:	AA 625-866
Reactivity:	Human
Host:	Rabbit
Clonality:	Polyclonal
Conjugate:	This ITGA6 antibody is un-conjugated
Application:	Western Blotting (WB), ELISA, Immunofluorescence (IF)

Product Details

Immunogen:	Recombinant Human Integrin alpha-6 protein (625-866AA)
Isotype:	IgG
Cross-Reactivity:	Human, Mouse, Rat
Purification:	>95%, Protein G purified

Target Details

Target:	ITGA6
Alternative Name:	ITGA6 (ITGA6 Products)
Background:	Background: Integrin alpha-6/beta-1 is a receptor for laminin on platelets. Integrin alpha-6/beta-4 is a receptor for laminin in epithelial cells and it plays a critical structural role in the

Target Details

hemidesmosome (By similarity). ITGA6:ITGB4 binds to NRG1 (via EGF domain) and this binding is essential for NRG1-ERBB signaling (PubMed:20682778). ITGA6:ITGB4 binds to IGF1 and this binding is essential for IGF1 signaling (PubMed:22351760).

Aliases: Alpha6p antibody, CD49 antigen-like family member F antibody, CD49f antibody, Integrin alpha6B antibody, Integrin, alpha 6 antibody, ITA6_HUMAN antibody, ITGA6 antibody, ITGA6B antibody, Processed integrin alpha-6 antibody, VLA 6 antibody, VLA-6 antibody

UniProt: [P23229](#)

Pathways: [CXCR4-mediated Signaling Events](#), [Brown Fat Cell Differentiation](#), [Integrin Complex](#)

Application Details

Application Notes: Recommended dilution: WB:1:500-1:5000, IF:1:200-1:500,

Restrictions: For Research Use only

Handling

Format: Liquid

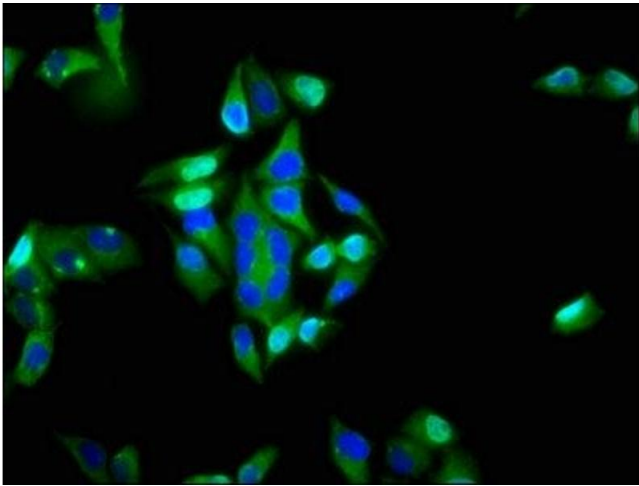
Buffer: Preservative: 0.03 % Proclin 300
Constituents: 50 % Glycerol, 0.01M PBS, pH 7.4

Preservative: ProClin

Precaution of Use: This product contains ProClin: a POISONOUS AND HAZARDOUS SUBSTANCE which should be handled by trained staff only.

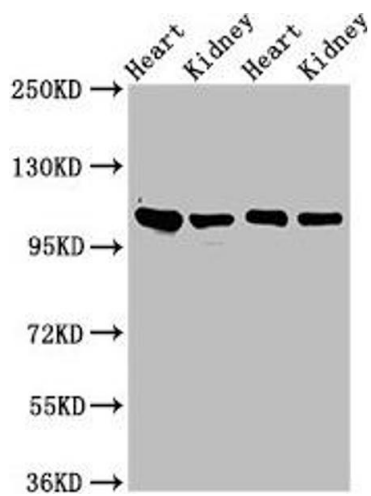
Storage: -20 °C,-80 °C

Storage Comment: Upon receipt, store at -20°C or -80°C. Avoid repeated freeze.



Immunofluorescence

Image 1. Immunofluorescence staining of HeLa cells with ABIN7156446 at 1:200, counter-stained with DAPI. The cells were fixed in 4 % formaldehyde, permeabilized using 0.2 % Triton X-100 and blocked in 10 % normal Goat Serum. The cells were then incubated with the antibody overnight at 4 °C. The secondary antibody was Alexa Fluor 488-conjugated AffiniPure Goat Anti-Rabbit IgG(H+L).



Western Blotting

Image 2. Western Blot Positive WB detected in: Rat heart tissue, Rat kidney tissue, Mouse heart tissue, Mouse kidney tissue. All lanes: ITGA6 antibody at 3 µg/mL. Secondary Goat polyclonal to rabbit IgG at 1/50000 dilution. Predicted band size: 127, 120, 123, 122, 125, 107 kDa. Observed band size: 100 kDa.