

Datasheet for ABIN7156505  
**anti-ILK antibody (AA 1-228)**



[Go to Product page](#)

3 Images

### Overview

Quantity:	100 µg
Target:	ILK
Binding Specificity:	AA 1-228
Reactivity:	Human
Host:	Rabbit
Clonality:	Polyclonal
Conjugate:	This ILK antibody is un-conjugated
Application:	Western Blotting (WB), ELISA, Immunohistochemistry (IHC), Immunofluorescence (IF)

### Product Details

Immunogen:	Recombinant Human Integrin-linked protein kinase protein (1-228AA)
Isotype:	IgG
Cross-Reactivity:	Human, Mouse, Rat
Purification:	>95%, Protein G purified

### Target Details

Target:	ILK
Alternative Name:	ILK ( <a href="#">ILK Products</a> )
Background:	Background: Receptor-proximal protein kinase regulating integrin-mediated signal transduction. May act as a mediator of inside-out integrin signaling. Focal adhesion protein part of the

## Target Details

---

complex ILK-PINCH. This complex is considered to be one of the convergence points of integrin- and growth factor-signaling pathway. Could be implicated in mediating cell architecture, adhesion to integrin substrates and anchorage-dependent growth in epithelial cells. Phosphorylates beta-1 and beta-3 integrin subunit on serine and threonine residues, but also AKT1 and GSK3B.

Aliases: 59 kDa serine/threonine protein kinase antibody, 59 kDa serine/threonine-protein kinase antibody, DKFZp686F1765 antibody, Epididymis secretory protein Li 28 antibody, HEL S 28 antibody, ILK 1 antibody, ILK 2 antibody, ILK antibody, ILK-1 antibody, ILK-2 antibody, ILK\_HUMAN antibody, ILK1 antibody, ILK2 antibody, Integrin linked kinase 2 antibody, Integrin linked Kinase antibody, Integrin linked protein kinase antibody, Integrin-linked protein kinase antibody, p59 antibody, p59ILK antibody

---

UniProt: [Q13418](#)

Pathways: [Regulation of Muscle Cell Differentiation](#), [Regulation of Cell Size](#), [Maintenance of Protein Location](#), [Skeletal Muscle Fiber Development](#), [Smooth Muscle Cell Migration](#)

## Application Details

---

Application Notes: Recommended dilution: WB:1:500-1:5000, IHC:1:20-1:200, IF:1:50-1:200,

Restrictions: For Research Use only

## Handling

---

Format: Liquid

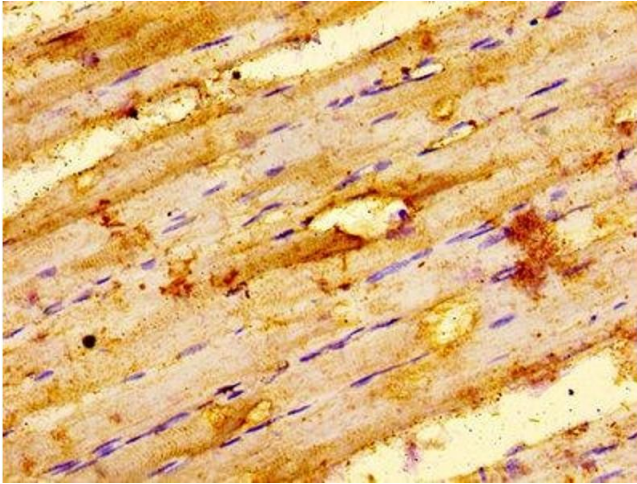
Buffer: Preservative: 0.03 % Proclin 300  
Constituents: 50 % Glycerol, 0.01M PBS, PH 7.4

Preservative: ProClin

Precaution of Use: This product contains ProClin: a POISONOUS AND HAZARDOUS SUBSTANCE which should be handled by trained staff only.

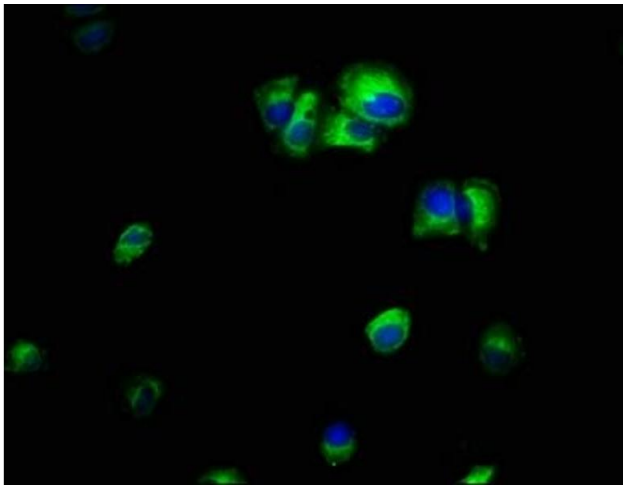
Storage: -20 °C,-80 °C

Storage Comment: Upon receipt, store at -20°C or -80°C. Avoid repeated freeze.



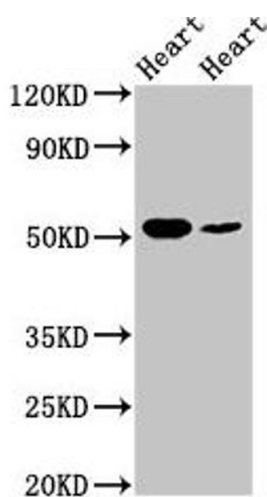
### Immunohistochemistry

**Image 1.** IHC image of ABIN7156505 diluted at 1:100 and staining in paraffin-embedded human skeletal muscle tissue performed on a Leica Bond™ system. After dewaxing and hydration, antigen retrieval was mediated by high pressure in a citrate buffer (pH 6.0). Section was blocked with 10% normal goat serum 30min at RT. Then primary antibody (1% BSA) was incubated at 4°C overnight. The primary is detected by a biotinylated secondary antibody and visualized using an HRP conjugated SP system.



### Immunofluorescence

**Image 2.** Immunofluorescence staining of MCF-7 cells with ABIN7156505 at 1:66, counter-stained with DAPI. The cells were fixed in 4% formaldehyde, permeabilized using 0.2% Triton X-100 and blocked in 10% normal Goat Serum. The cells were then incubated with the antibody overnight at 4°C. The secondary antibody was Alexa Fluor 488-conjugated AffiniPure Goat Anti-Rabbit IgG(H+L).



### Western Blotting

**Image 3.** Western Blot Positive WB detected in: Rat heart tissue, Mouse heart tissue All lanes: ILK antibody at 5 µg/mL Secondary Goat polyclonal to rabbit IgG at 1/50000 dilution Predicted band size: 52, 45, 37 kDa Observed band size: 52 kDa