

Datasheet for ABIN7156509
anti-ITIH1 antibody (AA 403-638)[Go to Product page](#)

1 Image

Overview

Quantity:	100 µL
Target:	ITIH1
Binding Specificity:	AA 403-638
Reactivity:	Human
Host:	Rabbit
Clonality:	Polyclonal
Conjugate:	This ITIH1 antibody is un-conjugated
Application:	ELISA, Immunohistochemistry (IHC)

Product Details

Immunogen:	Recombinant Human Inter-alpha-trypsin inhibitor heavy chain H1 protein (403-638AA)
Isotype:	IgG
Cross-Reactivity:	Human
Purification:	>95%, Protein G purified

Target Details

Target:	ITIH1
Alternative Name:	ITIH1 (ITIH1 Products)
Background:	Background: May act as a carrier of hyaluronan in serum or as a binding protein between hyaluronan and other matrix protein, including those on cell surfaces in tissues to regulate the

Target Details

localization, synthesis and degradation of hyaluronan which are essential to cells undergoing biological processes.

Aliases: H1P antibody, IATIH antibody, IGHEP1 antibody, Inter alpha (globulin) inhibitor H1 antibody, Inter alpha (globulin) inhibitor H1 polypeptide antibody, Inter alpha trypsin inhibitor heavy chain 1 antibody, Inter alpha trypsin inhibitor heavy chain H1 antibody, Inter-alpha-inhibitor heavy chain 1 antibody, Inter-alpha-trypsin inhibitor complex component III antibody, Inter-alpha-trypsin inhibitor heavy chain H1 antibody, ITI heavy chain H1 antibody, ITI-HC1 antibody, ITIH antibody, ITIH1 antibody, ITIH1_HUMAN antibody, Serum-derived hyaluronan-associated protein antibody, SHAP antibody

UniProt: [P19827](#)

Pathways: [Glycosaminoglycan Metabolic Process](#)

Application Details

Application Notes: Recommended dilution: IHC:1:200-1:500,

Restrictions: For Research Use only

Handling

Format: Liquid

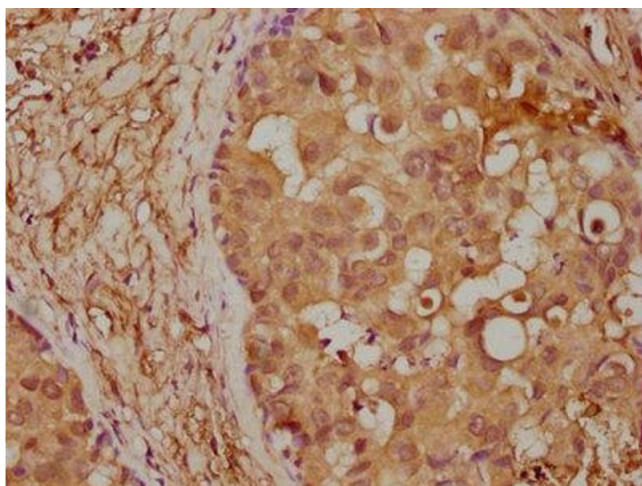
Buffer: Preservative: 0.03 % Proclin 300
Constituents: 50 % Glycerol, 0.01M PBS, pH 7.4

Preservative: ProClin

Precaution of Use: This product contains ProClin: a POISONOUS AND HAZARDOUS SUBSTANCE which should be handled by trained staff only.

Storage: -20 °C,-80 °C

Storage Comment: Upon receipt, store at -20°C or -80°C. Avoid repeated freeze.



Immunohistochemistry

Image 1. IHC image of ABIN7156509 diluted at 1:400 and staining in paraffin-embedded human breast cancer performed on a Leica Bond™ system. After dewaxing and hydration, antigen retrieval was mediated by high pressure in a citrate buffer (pH 6.0). Section was blocked with 10 % normal goat serum 30 min at RT. Then primary antibody (1 % BSA) was incubated at 4 °C overnight. The primary is detected by a biotinylated secondary antibody and visualized using an HRP conjugated SP system.