



[Go to Product page](#)

Datasheet for ABIN7156529
anti-CCDC36 antibody (AA 11-592)

2 Images

Overview

Quantity:	100 µg
Target:	CCDC36
Binding Specificity:	AA 11-592
Reactivity:	Human
Host:	Rabbit
Clonality:	Polyclonal
Conjugate:	This CCDC36 antibody is un-conjugated
Application:	ELISA, Immunohistochemistry (IHC)

Product Details

Immunogen:	Recombinant Human Interactor of HORMAD1 protein 1 protein (11-592AA)
Isotype:	IgG
Cross-Reactivity:	Human
Purification:	>95%, Protein G purified

Target Details

Target:	CCDC36
Alternative Name:	CCDC36 (CCDC36 Products)
Background:	CCDC36 antibody, IHO1Interactor of HORMAD1 protein 1 antibody, Cancer/testis antigen 74 antibody, CT74 antibody, Coiled-coil domain-containing protein 36 antibody

Target Details

UniProt: [Q8IYA8](#)

Application Details

Application Notes: Recommended dilution: IHC:1:20-1:200,

Restrictions: For Research Use only

Handling

Format: Liquid

Buffer: Preservative: 0.03 % Proclin 300
Constituents: 50 % Glycerol, 0.01M PBS, PH 7.4

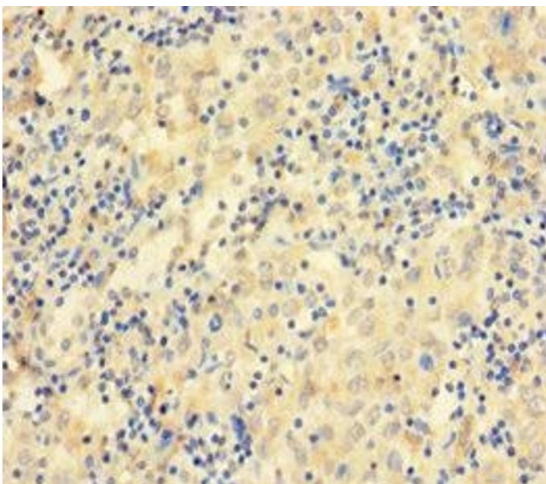
Preservative: ProClin

Precaution of Use: This product contains ProClin: a POISONOUS AND HAZARDOUS SUBSTANCE which should be handled by trained staff only.

Storage: -20 °C,-80 °C

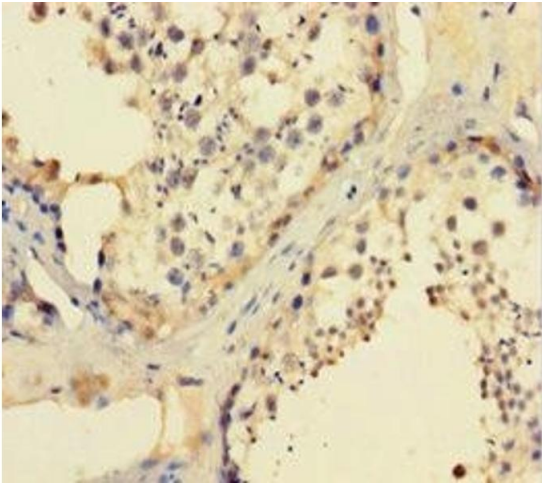
Storage Comment: Upon receipt, store at -20°C or -80°C. Avoid repeated freeze.

Images



Immunohistochemistry

Image 1. Immunohistochemistry of paraffin-embedded human lung cancer using ABIN7156529 at dilution of 1:100



Immunohistochemistry

Image 2. Immunohistochemistry of paraffin-embedded human testis tissue using ABIN7156529 at dilution of 1:100