



[Go to Product page](#)

Datasheet for ABIN7156544
anti-ICAM5 antibody (AA 32-180)

2 Images

Overview

Quantity:	100 µL
Target:	ICAM5
Binding Specificity:	AA 32-180
Reactivity:	Human
Host:	Rabbit
Clonality:	Polyclonal
Conjugate:	This ICAM5 antibody is un-conjugated
Application:	Western Blotting (WB), ELISA, Immunohistochemistry (IHC)

Product Details

Immunogen:	Recombinant Human Intercellular adhesion molecule 5 protein (32-180AA)
Isotype:	IgG
Cross-Reactivity:	Human
Purification:	Antigen Affinity Purified

Target Details

Target:	ICAM5
Alternative Name:	ICAM5 (ICAM5 Products)
Background:	Background: ICAM proteins are ligands for the leukocyte adhesion protein LFA-1 (integrin alpha-L/beta-2).

Target Details

Aliases: ICAM5 antibody, TLCN antibody, TLNIntercellular adhesion molecule 5 antibody, ICAM-5 antibody, Telencephalin antibody

UniProt: [Q9UMF0](#)

Pathways: [Cell-Cell Junction Organization](#), [ER-Nucleus Signaling](#), [Maintenance of Protein Location](#)

Application Details

Application Notes: Recommended dilution: WB:1:1000-1:5000, IHC:1:20-1:200,

Restrictions: For Research Use only

Handling

Format: Liquid

Buffer: PBS with 0.02 % sodium azide, 50 % glycerol, pH 7.3.

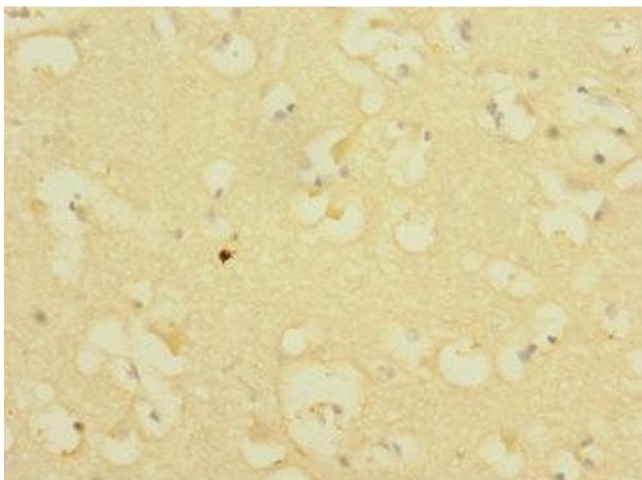
Preservative: Sodium azide

Precaution of Use: This product contains Sodium azide: a POISONOUS AND HAZARDOUS SUBSTANCE which should be handled by trained staff only.

Storage: -20 °C,-80 °C

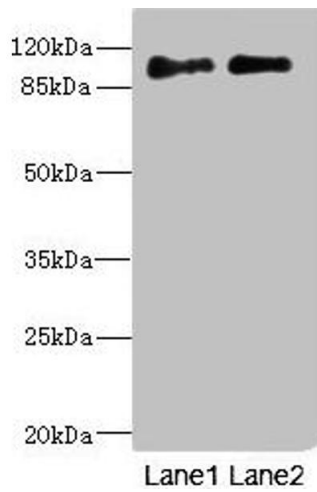
Storage Comment: Upon receipt, store at -20°C or -80°C. Avoid repeated freeze.

Images



Immunohistochemistry

Image 1. Immunohistochemistry of paraffin-embedded human brain tissue using ABIN7156544 at dilution of 1:100



Western Blotting

Image 2. Western blot All lanes: ICAM5 antibody at 4.2 μ g/mL Lane 1: HepG2 whole cell lysate Lane 2: A549 whole cell lysate Secondary Goat polyclonal to rabbit IgG at 1/10000 dilution Predicted band size: 97 kDa Observed band size: 97 kDa