

Datasheet for ABIN7156557
anti-IFNA16 antibody (AA 24-189)[Go to Product page](#)

1 Image

Overview

Quantity:	100 µL
Target:	IFNA16
Binding Specificity:	AA 24-189
Reactivity:	Human
Host:	Rabbit
Clonality:	Polyclonal
Conjugate:	This IFNA16 antibody is un-conjugated
Application:	ELISA, Immunohistochemistry (IHC)

Product Details

Immunogen:	Recombinant Human Interferon alpha-16 protein (24-189AA)
Isotype:	IgG
Cross-Reactivity:	Human
Purification:	>95%, Protein G purified

Target Details

Target:	IFNA16
Alternative Name:	IFNA16 (IFNA16 Products)
Background:	Background: Produced by macrophages, IFN-alpha have antiviral activities. Interferon stimulates the production of two enzymes: a protein kinase and an oligoadenylate synthetase.

Target Details

Aliases: IFNA16 Interferon alpha-16 antibody, IFN-alpha-16 antibody, Interferon alpha-WA antibody

UniProt: [P05015](#)

Pathways: [JAK-STAT Signaling](#), [Hepatitis C](#)

Application Details

Application Notes: Recommended dilution: IHC:1:20-1:200,

Restrictions: For Research Use only

Handling

Format: Liquid

Buffer: Preservative: 0.03 % Proclin 300
Constituents: 50 % Glycerol, 0.01M PBS, pH 7.4

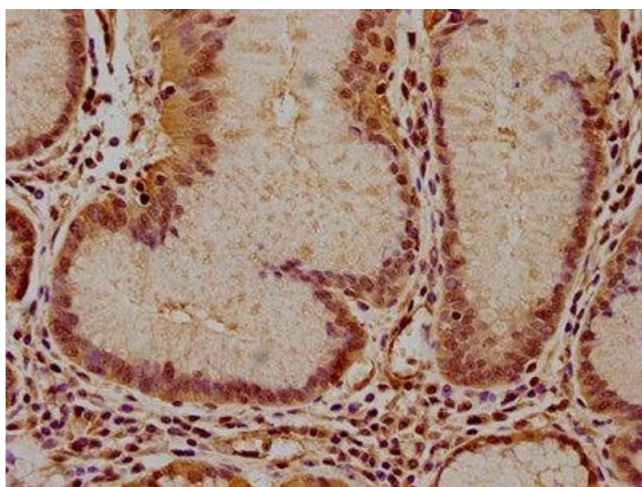
Preservative: ProClin

Precaution of Use: This product contains ProClin: a POISONOUS AND HAZARDOUS SUBSTANCE which should be handled by trained staff only.

Storage: -20 °C, -80 °C

Storage Comment: Upon receipt, store at -20°C or -80°C. Avoid repeated freeze.

Images



Immunohistochemistry

Image 1. IHC image of ABIN7156557 diluted at 1:100 and staining in paraffin-embedded human gastric cancer performed on a Leica Bond™ system. After dewaxing and hydration, antigen retrieval was mediated by high pressure in a citrate buffer (pH 6.0). Section was blocked with 10 % normal goat serum 30 min at RT. Then primary antibody (1 % BSA) was incubated at 4 °C overnight. The primary is detected by a biotinylated secondary antibody and visualized using an HRP conjugated SP system.