

Datasheet for ABIN7156606
anti-IL28RA antibody (AA 21-228)

3 Images

[Go to Product page](#)

Overview

Quantity:	100 µL
Target:	IL28RA
Binding Specificity:	AA 21-228
Reactivity:	Human
Host:	Rabbit
Clonality:	Polyclonal
Conjugate:	This IL28RA antibody is un-conjugated
Application:	Western Blotting (WB), ELISA, Immunohistochemistry (IHC)

Product Details

Immunogen:	Recombinant Human Interferon lambda receptor 1 protein (21-228AA)
Isotype:	IgG
Cross-Reactivity:	Human, Mouse
Purification:	Antigen Affinity Purified

Target Details

Target:	IL28RA
Alternative Name:	IFNLR1 (IL28RA Products)
Background:	Background: The IFNLR1/IL10RB dimer is a receptor for the cytokine ligands IFNL2 and IFNL3 and mediates their antiviral activity. The ligand/receptor complex stimulate the activation of the

Target Details

JAK/STAT signaling pathway leading to the expression of IFN-stimulated genes (ISG), which contribute to the antiviral state. Determines the cell type specificity of the lambda interferon action. Shows a more restricted pattern of expression in the epithelial tissues thereby limiting responses to lambda interferons primarily to epithelial cells of the respiratory, gastrointestinal, and reproductive tracts. Seems not to be essential for early virus-activated host defense in vaginal infection, but plays an important role in Toll-like receptor (TLR)-induced antiviral defense. Plays a significant role in the antiviral immune defense in the intestinal epithelium.

Aliases: IFNLR1 antibody, IL28RA antibody, LICR2 antibody, Interferon lambda receptor 1 antibody, IFN-lambda receptor 1 antibody, IFN-lambda-R1 antibody, Cytokine receptor class-II member 12 antibody, Cytokine receptor family 2 member 12 antibody, CRF2-12 antibody, Interleukin-28 receptor subunit alpha antibody, IL-28 receptor subunit alpha antibody, IL-28R-alpha antibody, IL-28RA antibody, Likely interleukin or cytokine receptor 2 antibody, LICR2 antibody

UniProt: [Q8IU57](#)

Application Details

Application Notes: Recommended dilution: WB:1:1000-1:5000, IHC:1:20-1:200,

Restrictions: For Research Use only

Handling

Format: Liquid

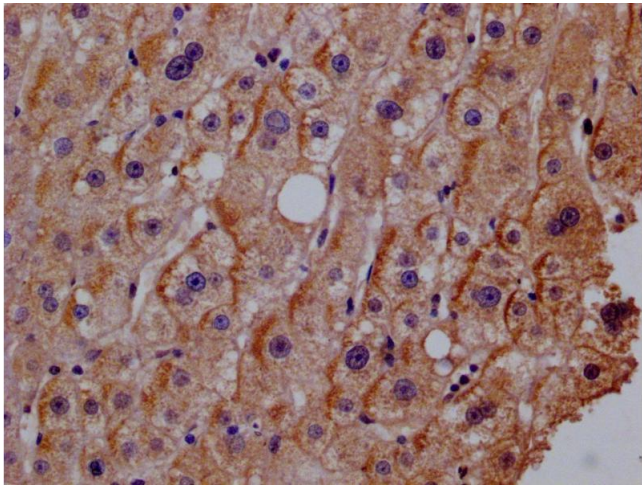
Buffer: PBS with 0.02 % sodium azide, 50 % glycerol, pH 7.3.

Preservative: Sodium azide

Precaution of Use: This product contains Sodium azide: a POISONOUS AND HAZARDOUS SUBSTANCE which should be handled by trained staff only.

Storage: -20 °C, -80 °C

Storage Comment: Upon receipt, store at -20°C or -80°C. Avoid repeated freeze.



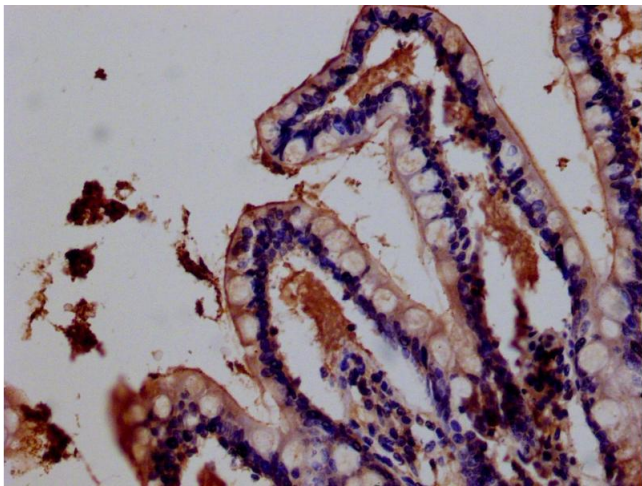
Immunohistochemistry

Image 1. Immunohistochemistry of paraffin-embedded human adrenal gland tissue using ABIN7156606 at dilution of 1:100



Western Blotting

Image 2. Western blot All lanes: IFNLR1 antibody at 3.04 μ g/mL Lane 1: Mouse kidney tissue Lane 2: Mouse liver tissue Lane 3: Human placenta tissue Lane 4: Mouse lung tissue Secondary Goat polyclonal to rabbit IgG at 1/10000 dilution Predicted band size: 58, 55, 24, 28 kDa Observed band size: 58 kDa



Immunohistochemistry

Image 3. Immunohistochemistry of paraffin-embedded human testis tissue using ABIN7156606 at dilution of 1:100