

Datasheet for ABIN715661
anti-SHC3 antibody (AA 501-594)[Go to Product page](#)

1 Image

Overview

Quantity:	100 µL
Target:	SHC3
Binding Specificity:	AA 501-594
Reactivity:	Mouse, Rat
Host:	Rabbit
Clonality:	Polyclonal
Conjugate:	This SHC3 antibody is un-conjugated
Application:	Western Blotting (WB), ELISA, Immunofluorescence (Cultured Cells) (IF (cc)), Immunofluorescence (Paraffin-embedded Sections) (IF (p)), Immunohistochemistry (Paraffin-embedded Sections) (IHC (p)), Immunohistochemistry (Frozen Sections) (IHC (fro))

Product Details

Immunogen:	KLH conjugated synthetic peptide derived from human SHC3
Isotype:	IgG
Cross-Reactivity:	Mouse, Rat
Predicted Reactivity:	Human,Dog,Horse
Purification:	Purified by Protein A.

Target Details

Target:	SHC3
---------	------

Target Details

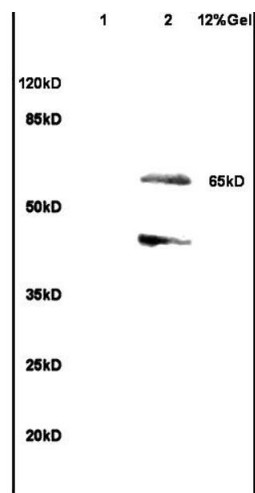
Alternative Name:	SHC3 (SHC3 Products)
Background:	<p>Synonyms: RAI, NSHC, SHCC, N-Shc, SHC-transforming protein 3, Neuronal Shc, Protein Rai, SHC-transforming protein C, Src homology 2 domain-containing-transforming protein C3, SH2 domain protein C3, SHC3</p> <p>Background: Signaling adapter that couples activated growth factor receptors to signaling pathway in neurons. Involved in the signal transduction pathways of neurotrophin-activated Trk receptors in cortical neurons.</p>
Gene ID:	53358
UniProt:	Q92529
Pathways:	RTK Signaling , EGFR Signaling Pathway , Neurotrophin Signaling Pathway

Application Details

Application Notes:	WB 1:300-5000 ELISA 1:500-1000 IHC-P 1:200-400 IHC-F 1:100-500 IF(IHC-P) 1:50-200 IF(IHC-F) 1:50-200 IF(ICC) 1:50-200
Restrictions:	For Research Use only

Handling

Format:	Liquid
Concentration:	1 µg/µL
Buffer:	0.01M TBS(pH 7.4) with 1 % BSA, 0.02 % Proclin300 and 50 % Glycerol.
Preservative:	ProClin
Precaution of Use:	This product contains ProClin: a POISONOUS AND HAZARDOUS SUBSTANCE, which should be handled by trained staff only.
Storage:	4 °C,-20 °C
Storage Comment:	Shipped at 4°C. Store at -20°C for one year. Avoid repeated freeze/thaw cycles.
Expiry Date:	12 months



SDS-PAGE

Image 1. Lane 1: rat heart lysates Lane 2: rat brain lysates probed with Anti SHC3 Polyclonal Antibody, Unconjugated (ABIN715661) at 1:200 in 4 °C. Followed by conjugation to secondary antibody at 1:3000 90min in 37 °C. Predicted band 65kD. Observed band size: 65kD