

Datasheet for ABIN7156618
anti-IRF2BP1 antibody (AA 340-499)[Go to Product page](#)

2 Images

Overview

Quantity:	100 µg
Target:	IRF2BP1
Binding Specificity:	AA 340-499
Reactivity:	Human
Host:	Rabbit
Clonality:	Polyclonal
Conjugate:	This IRF2BP1 antibody is un-conjugated
Application:	ELISA, Immunohistochemistry (IHC), Immunofluorescence (IF)

Product Details

Immunogen:	Recombinant Human Interferon regulatory factor 2-binding protein 1 protein (340-499AA)
Isotype:	IgG
Cross-Reactivity:	Human
Purification:	>95%, Protein G purified

Target Details

Target:	IRF2BP1
Alternative Name:	IRF2BP1 (IRF2BP1 Products)
Background:	Background: Acts as a transcriptional corepressor in a IRF2-dependent manner, this repression is not mediated by histone deacetylase activities. May act as an E3 ligase towards JDP2,

Target Details

enhancing its polyubiquitination. Represses ATF2-dependent transcriptional activation.

Aliases: DKFZp434M154 antibody, I2BP1_HUMAN antibody, Interferon regulatory factor 2 binding protein 1 antibody, Interferon regulatory factor 2-binding protein 1 antibody, IRF 2BP1 antibody, IRF-2-binding protein 1 antibody, IRF-2BP1 antibody, IRF2 binding protein 1 antibody, Irf2bp1 antibody

UniProt: [Q8IU81](#)

Application Details

Application Notes: Recommended dilution: IHC:1:20-1:200, IF:1:50-1:200,

Restrictions: For Research Use only

Handling

Format: Liquid

Buffer: Preservative: 0.03 % Proclin 300
Constituents: 50 % Glycerol, 0.01M PBS, pH 7.4

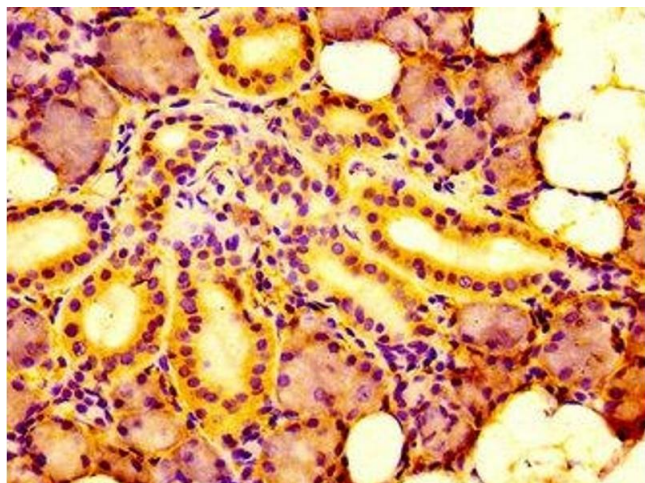
Preservative: ProClin

Precaution of Use: This product contains ProClin: a POISONOUS AND HAZARDOUS SUBSTANCE which should be handled by trained staff only.

Storage: -20 °C,-80 °C

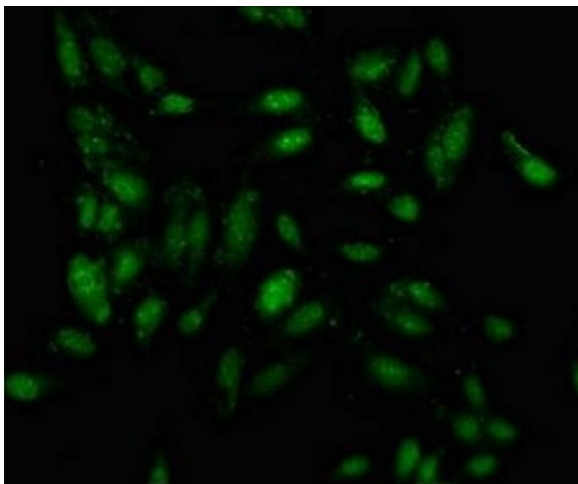
Storage Comment: Upon receipt, store at -20°C or -80°C. Avoid repeated freeze.

Images



Immunohistochemistry

Image 1. IHC image of ABIN7156618 diluted at 1:100 and staining in paraffin-embedded human salivary gland tissue performed on a Leica Bond™ system. After dewaxing and hydration, antigen retrieval was mediated by high pressure in a citrate buffer (pH 6.0). Section was blocked with 10% normal goat serum 30min at RT. Then primary antibody (1% BSA) was incubated at 4°C overnight. The primary is detected by a biotinylated secondary antibody and



visualized using an HRP conjugated SP system.

Immunofluorescence

Image 2. Immunofluorescence staining of HeLa cells with ABIN7156618 at 1:100, counter-stained with DAPI. The cells were fixed in 4% formaldehyde, permeabilized using 0.2% Triton X-100 and blocked in 10% normal Goat Serum. The cells were then incubated with the antibody overnight at 4°C. The secondary antibody was Alexa Fluor 488-conjugated AffiniPure Goat Anti-Rabbit IgG(H+L).