

Datasheet for ABIN7156679
anti-IFITM1 antibody (AA 1-36)[Go to Product page](#)

2 Images

Overview

Quantity:	100 µg
Target:	IFITM1
Binding Specificity:	AA 1-36
Reactivity:	Human
Host:	Rabbit
Clonality:	Polyclonal
Conjugate:	This IFITM1 antibody is un-conjugated
Application:	Western Blotting (WB), ELISA, Immunofluorescence (IF)

Product Details

Immunogen:	Recombinant Human Interferon-induced transmembrane protein 1 protein (1-36AA)
Isotype:	IgG
Cross-Reactivity:	Human
Purification:	>95%, Protein G purified

Target Details

Target:	IFITM1
Alternative Name:	IFITM1 (IFITM1 Products)
Background:	Background: IFN-induced antiviral protein that mediate cellular innate immunity to at least three major human pathogens, namely influenza A H1N1 virus, West Nile virus, and dengue virus by

Target Details

inhibiting the early step(s) of replication. Plays a key role in the antiproliferative action of IFN-gamma either by inhibiting the ERK activation or by arresting cell growth in G1 phase in a p53-dependent manner. Implicated in the control of cell growth. Component of a multimeric complex involved in the transduction of antiproliferative and homotypic adhesion signals.

Aliases: 9-27 antibody, CD 225 antibody, CD 225 antigen antibody, CD225 antibody, CD225 antigen antibody, Dispanin subfamily A member 2a antibody, DSPA2a antibody, IFI 17 antibody, IFI17 antibody, IFITM1 antibody, IFM1_HUMAN antibody, Interferon induced protein 17 antibody, interferon induced transmembrane protein 1 (9-27) antibody, Interferon induced transmembrane protein 1 antibody, Interferon inducible protein 9-27 antibody, Interferon-induced protein 17 antibody, Interferon-induced transmembrane protein 1 antibody, Interferon-inducible protein 9-27 antibody, Leu 13 antibody, Leu 13 antigen antibody, Leu-13 antigen antibody, LEU13 antibody

UniProt: [P13164](#)

Application Details

Application Notes: Recommended dilution: WB:1:1000-1:5000, IF:1:50-1:200,

Restrictions: For Research Use only

Handling

Format: Liquid

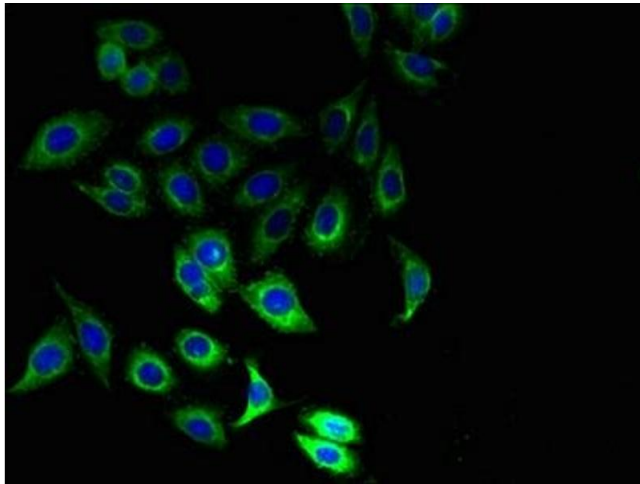
Buffer: Preservative: 0.03 % Proclin 300
Constituents: 50 % Glycerol, 0.01M PBS, PH 7.4

Preservative: ProClin

Precaution of Use: This product contains ProClin: a POISONOUS AND HAZARDOUS SUBSTANCE which should be handled by trained staff only.

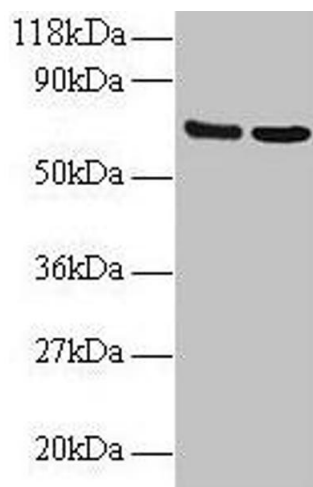
Storage: -20 °C,-80 °C

Storage Comment: Upon receipt, store at -20°C or -80°C. Avoid repeated freeze.



Immunofluorescence

Image 1. Immunofluorescent analysis of HeLa cells using ABIN7156679 at dilution of 1:100 and Alexa Fluor 488-conjugated AffiniPure Goat Anti-Rabbit IgG(H+L)



Western Blotting

Image 2. Western blot All lanes: IFITM1 antibody at 2 µg/mL
Lane 1: EC109 whole cell lysate Lane 2: 293T whole cell lysate
Secondary Goat polyclonal to rabbit IgG at 1/15000 dilution
Predicted band size: 14 kDa Observed band size: 70 kDa