

Datasheet for ABIN7156687  
**anti-IFITM3 antibody (AA 1-57)**

## 3 Images

[Go to Product page](#)

## Overview

Quantity:	100 µg
Target:	IFITM3
Binding Specificity:	AA 1-57
Reactivity:	Human
Host:	Rabbit
Clonality:	Polyclonal
Conjugate:	This IFITM3 antibody is un-conjugated
Application:	Western Blotting (WB), ELISA, Immunohistochemistry (IHC), Immunoprecipitation (IP)

## Product Details

Immunogen:	Recombinant Human Interferon-induced transmembrane protein 3 protein (1-57AA)
Isotype:	IgG
Cross-Reactivity:	Human
Purification:	>95%, Protein G purified

## Target Details

Target:	IFITM3
Alternative Name:	IFITM3 ( <a href="#">IFITM3 Products</a> )
Background:	Background: IFN-induced antiviral protein which disrupts intracellular cholesterol homeostasis. Inhibits the entry of viruses to the host cell cytoplasm by preventing viral fusion with cholesterol

## Target Details

depleted endosomes. May inactivate new enveloped viruses which buds out of the infected cell, by letting them go out with a cholesterol depleted membrane. Active against multiple viruses, including influenza A virus, SARS coronavirus (SARS-CoV), Marburg virus (MARV) and Ebola virus (EBOV), Dengue virus (DENV), West Nile virus (WNV), human immunodeficiency virus type 1 (HIV-1) and vesicular stomatitis virus (VSV). Can inhibit: influenza virus hemagglutinin protein-mediated viral entry, MARV and EBOV GP1,2-mediated viral entry, SARS-CoV S protein-mediated viral entry and VSV G protein-mediated viral entry. Plays a critical role in the structural stability and function of vacuolar ATPase (v-ATPase). Establishes physical contact with the v-ATPase of endosomes which is critical for proper clathrin localization and is also required for the function of the v-ATPase to lower the pH in phagocytic endosomes thus establishing an antiviral state. Aliases: 1 8U antibody, Fragilis antibody, IFITM3 antibody, IFM3\_HUMAN antibody, Interferon induced transmembrane protein 3 (1 8U) antibody, Interferon Induced Transmembrane Protein 3 antibody, Interferon inducible antibody, Interferon inducible protein 1 8U antibody, Interferon Inducible Protein 15 antibody, Interferon Inducible Protein Homolog antibody, Interferon-induced transmembrane protein 3 antibody, Interferon-inducible protein 1-8U antibody, IP15 antibody

UniProt: [Q01628](#)

## Application Details

Application Notes: Recommended dilution: WB:1:500-1:5000, IHC:1:20-1:200, IP:1:200-1:2000,

Restrictions: For Research Use only

## Handling

Format: Liquid

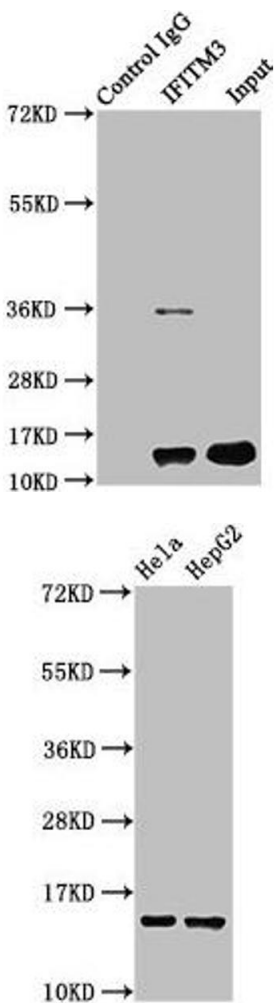
Buffer: Preservative: 0.03 % Proclin 300  
Constituents: 50 % Glycerol, 0.01M PBS, pH 7.4

Preservative: ProClin

Precaution of Use: This product contains ProClin: a POISONOUS AND HAZARDOUS SUBSTANCE which should be handled by trained staff only.

Storage: -20 °C, -80 °C

Storage Comment: Upon receipt, store at -20°C or -80°C. Avoid repeated freeze.

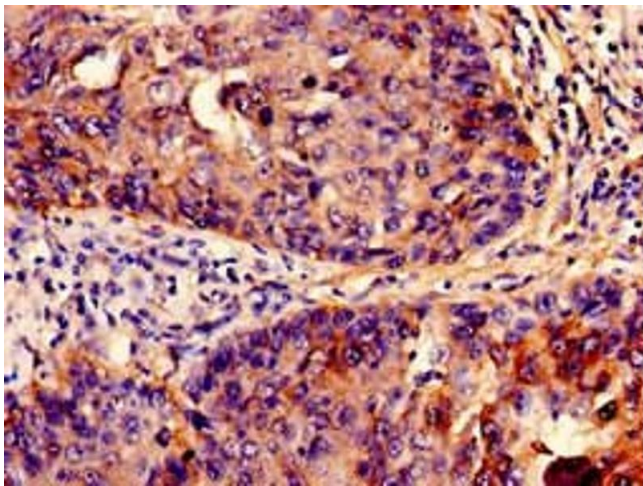


### Western Blotting

**Image 1.** Immunoprecipitating IFITM3 in HepG2 whole cell lysate Lane 1: Rabbit control IgG instead of ABIN7156687 in HepG2 whole cell lysate. For western blotting, a HRP-conjugated Protein G antibody was used as the secondary antibody (1/2000) Lane 2: ABIN7156687 (6 µg) + HepG2 whole cell lysate (500 µg) Lane 3: HepG2 whole cell lysate (20 µg)

### Western Blotting

**Image 2.** Western Blot Positive WB detected in: Hela whole cell lysate, HepG2 whole cell lysate All lanes: IFITM3 antibody at 2.5 µg/mL Secondary Goat polyclonal to rabbit IgG at 1/50000 dilution Predicted band size: 15 kDa Observed band size: 15 kDa



### Immunohistochemistry

**Image 3.** Immunohistochemistry analysis of human cervical cancer using ABIN7156687 at dilution of 1:100