



[Go to Product page](#)

Datasheet for ABIN7156734  
**anti-IL1RAP antibody (AA 21-356)**

2 Images

Overview

Quantity:	100 µL
Target:	IL1RAP
Binding Specificity:	AA 21-356
Reactivity:	Human
Host:	Rabbit
Clonality:	Polyclonal
Conjugate:	This IL1RAP antibody is un-conjugated
Application:	Immunohistochemistry (IHC), ELISA

Product Details

Immunogen:	Recombinant Human Interleukin-1 receptor accessory protein (21-356AA)
Isotype:	IgG
Cross-Reactivity:	Human
Purification:	Antigen Affinity Purified

Target Details

Target:	IL1RAP
Alternative Name:	IL1RAP ( <a href="#">IL1RAP Products</a> )
Background:	Background: Coreceptor for IL1RL2 in the IL-36 signaling system (By similarity). Coreceptor with IL1R1 in the IL-1 signaling system. Associates with IL1R1 bound to IL1B to form the high

## Target Details

---

affinity interleukin-1 receptor complex which mediates interleukin-1-dependent activation of NF-kappa-B and other pathways. Signaling involves the recruitment of adapter molecules such as TOLLIP, MYD88, and IRAK1 or IRAK2 via the respective TIR domains of the receptor/coreceptor subunits. Recruits TOLLIP to the signaling complex. Does not bind to interleukin-1 alone, binding of IL1RN to IL1R1, prevents its association with IL1R1 to form a signaling complex. The cellular response is modulated through a non-signaling association with the membrane IL1R2 decoy receptor. Secreted forms (isoforms 2 and 3) associate with secreted ligand-bound IL1R2 and increase the affinity of secreted IL1R2 for IL1B, this complex formation may be the dominant mechanism for neutralization of IL1B by secreted/soluble receptors.

Aliases: C3orf13 antibody, FLJ37788 antibody, IL 1 receptor accessory protein antibody, IL 1R 3 antibody, IL 1R3 antibody, IL 1RAcP antibody, IL 1RAP antibody, IL-1 receptor accessory protein antibody, IL-1R-3 antibody, IL-1R3 antibody, IL-1RAcP antibody, IL-1RAP antibody, IL1 receptor accessory protein antibody, IL1AP\_HUMAN antibody, IL1R3 antibody, IL1RAcP antibody, Il1rap antibody, Interleukin 1 Accessory Protein antibody, interleukin 1 receptor 3 antibody, Interleukin 1 receptor accessory protein antibody, interleukin 1 receptor accessory protein beta antibody, Interleukin-1 receptor 3 antibody, Interleukin-1 receptor accessory protein antibody

---

UniProt: [Q9NPH3](#)

---

Pathways: [NF-kappaB Signaling](#), [Growth Factor Binding](#)

## Application Details

---

Application Notes: Recommended dilution: IHC:1:20-1:200,

---

Restrictions: For Research Use only

## Handling

---

Format: Liquid

---

Buffer: PBS with 0.02 % sodium azide, 50 % glycerol, pH 7.3.

---

Preservative: Sodium azide

---

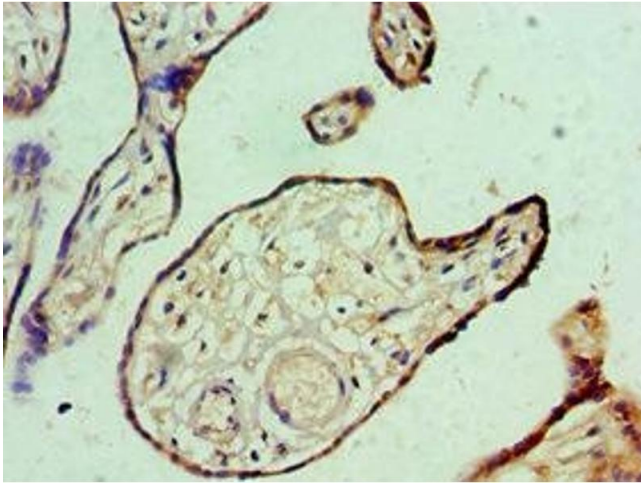
Precaution of Use: This product contains Sodium azide: a POISONOUS AND HAZARDOUS SUBSTANCE which should be handled by trained staff only.

---

Storage: -20 °C,-80 °C

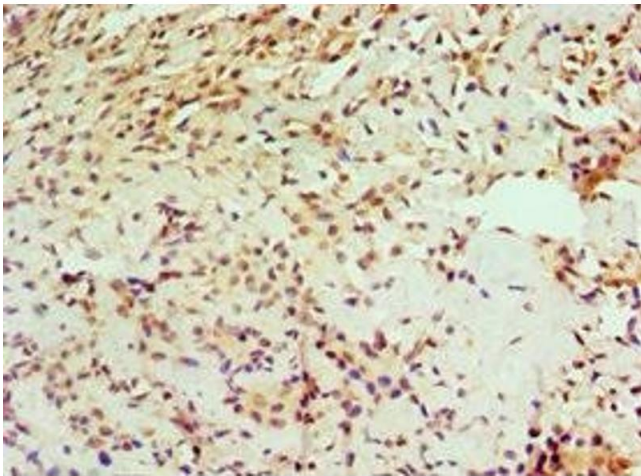
---

Storage Comment: Upon receipt, store at -20°C or -80°C. Avoid repeated freeze.



#### Immunohistochemistry

**Image 1.** Immunohistochemistry of paraffin-embedded human placenta tissue using ABIN7156734 at dilution of 1:100



#### Immunohistochemistry

**Image 2.** Immunohistochemistry of paraffin-embedded human breast cancer using ABIN7156734 at dilution of 1:100