



[Go to Product page](#)

Datasheet for ABIN7156735

anti-IL1RAPL1 antibody (AA 564-679)

3 Images

Overview

Quantity:	100 µg
Target:	IL1RAPL1
Binding Specificity:	AA 564-679
Reactivity:	Human
Host:	Rabbit
Clonality:	Polyclonal
Conjugate:	This IL1RAPL1 antibody is un-conjugated
Application:	Western Blotting (WB), ELISA, Immunohistochemistry (IHC), Immunofluorescence (IF)

Product Details

Immunogen:	Recombinant Human Interleukin-1 receptor accessory protein-like 1 protein (564-679AA)
Isotype:	IgG
Cross-Reactivity:	Human
Purification:	>95%, Protein G purified

Target Details

Target:	IL1RAPL1
Alternative Name:	IL1RAPL1 (IL1RAPL1 Products)
Background:	Background: May regulate secretion and presynaptic differentiation through inhibition of the activity of N-type voltage-gated calcium channel. May activate the MAP kinase JNK. Plays a

Target Details

role in presynaptic and postsynaptic differentiation and dendritic spine formation in neurons.
Aliases: IL 1 RAPL 1 antibody, IL 1RAPL 1 antibody, IL-1-RAPL-1 antibody, IL-1RAPL-1 antibody, IL1R8 antibody, IL1RAPL 1 antibody, IL1RAPL antibody, IL1RAPL-1 antibody, IL1RAPL1 antibody, Interleukin 1 receptor 8 antibody, Interleukin 1 receptor accessory protein like 1 antibody, Interleukin-1 receptor accessory protein-like 1 antibody, IRPL1_HUMAN antibody, Mental retardation X linked 10 antibody, Mental retardation X linked 21 antibody, Mental retardation X linked 34 antibody, MRX 21 antibody, MRX 34 antibody, MRX10 antibody, MRX21 antibody, MRX34 antibody, Oligophrenin 4 antibody, Oligophrenin-4 antibody, Oligophrenin4 antibody, OPHN 4 antibody, OPHN4 antibody, Three immunoglobulin domain containing IL 1 receptor related 2 antibody, Three immunoglobulin domain-containing IL-1 receptor-related 2 antibody, TIGIRR 2 antibody, TIGIRR-2 antibody, TIGIRR2 antibody, X linked interleukin 1 receptor accessory protein like 1 antibody, X-linked interleukin-1 receptor accessory protein-like 1 antibody

UniProt: [Q9NZN1](#)

Pathways: [Synaptic Membrane](#), [Growth Factor Binding](#)

Application Details

Application Notes: Recommended dilution: WB:1:500-1:5000, IHC:1:200-1:500, IF:1:50-1:200,

Restrictions: For Research Use only

Handling

Format: Liquid

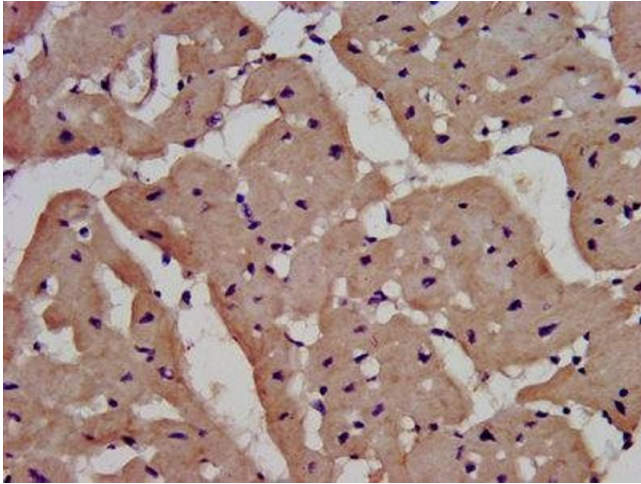
Buffer: Preservative: 0.03 % Proclin 300
Constituents: 50 % Glycerol, 0.01M PBS, pH 7.4

Preservative: ProClin

Precaution of Use: This product contains ProClin: a POISONOUS AND HAZARDOUS SUBSTANCE which should be handled by trained staff only.

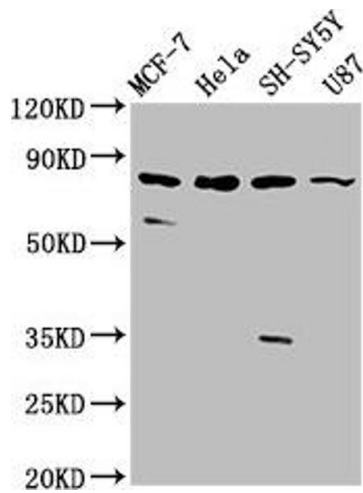
Storage: -20 °C,-80 °C

Storage Comment: Upon receipt, store at -20°C or -80°C. Avoid repeated freeze.



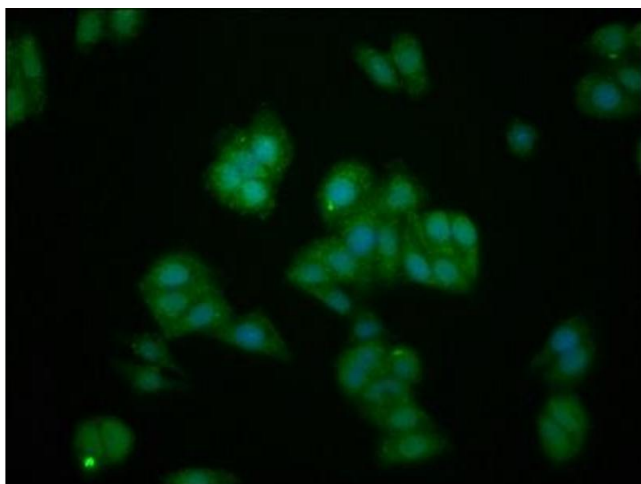
Immunohistochemistry

Image 1. IHC image of ABIN7156735 diluted at 1:400 and staining in paraffin-embedded human heart tissue performed on a Leica Bond™ system. After dewaxing and hydration, antigen retrieval was mediated by high pressure in a citrate buffer (pH 6.0). Section was blocked with 10% normal goat serum 30min at RT. Then primary antibody (1% BSA) was incubated at 4°C overnight. The primary is detected by a biotinylated secondary antibody and visualized using an HRP conjugated SP system.



Western Blotting

Image 2. Western Blot Positive WB detected in: MCF-7 whole cell lysate, HeLa whole cell lysate, SH-SY5Y whole cell lysate, U87 whole cell lysate. All lanes: IL1RAPL1 antibody at 5.4 µg/mL. Secondary Goat polyclonal to rabbit IgG at 1/50000 dilution. Predicted band size: 80 kDa. Observed band size: 80 kDa.



Immunofluorescence

Image 3. Immunofluorescence staining of HepG2 cells with ABIN7156735 at 1:133, counter-stained with DAPI. The cells were fixed in 4% formaldehyde, permeabilized using 0.2% Triton X-100 and blocked in 10% normal Goat Serum. The cells were then incubated with the antibody overnight at 4°C. The secondary antibody was Alexa Fluor 488-conjugated AffiniPure Goat Anti-Rabbit IgG(H+L).