



[Go to Product page](#)

Datasheet for ABIN7156763  
**anti-IL1RN antibody (AA 22-230)**

2 Images

Overview

Quantity:	100 µL
Target:	IL1RN
Binding Specificity:	AA 22-230
Reactivity:	Human
Host:	Rabbit
Clonality:	Polyclonal
Conjugate:	This IL1RN antibody is un-conjugated
Application:	Western Blotting (WB), Immunohistochemistry (IHC), ELISA

Product Details

Immunogen:	Recombinant Human Interleukin-10 receptor subunit alpha protein (22-230AA)
Isotype:	IgG
Cross-Reactivity:	Human, Mouse
Purification:	Antigen Affinity Purified

Target Details

Target:	IL1RN
Alternative Name:	IL1RA ( <a href="#">IL1RN Products</a> )
Background:	Background: Receptor for IL10, binds IL10 with a high affinity. Aliases: CD210 antibody, CDw210a antibody, CDw210a antigen antibody, HIL 10R antibody,

## Target Details

---

HIL10R antibody, I10R1\_HUMAN antibody, IL 10R 1 antibody, IL 10R A antibody, IL 10R antibody, IL 10R1 antibody, IL-10 receptor subunit alpha antibody, IL-10R subunit 1 antibody, IL-10R subunit alpha antibody, IL-10R1 antibody, IL-10RA antibody, IL10R antibody, IL10R1 antibody, IL10RA antibody, Interleukin 10 receptor alpha antibody, Interleukin 10 receptor alpha chain antibody, Interleukin-10 receptor subunit 1 antibody, Interleukin-10 receptor subunit alpha antibody

UniProt: [Q13651](#)

Pathways: [NF-kappaB Signaling](#), [Hormone Transport](#), [Cancer Immune Checkpoints](#)

## Application Details

---

Application Notes: Recommended dilution: WB:1:200-1:1000, IHC:1:20-1:200,

Restrictions: For Research Use only

## Handling

---

Format: Liquid

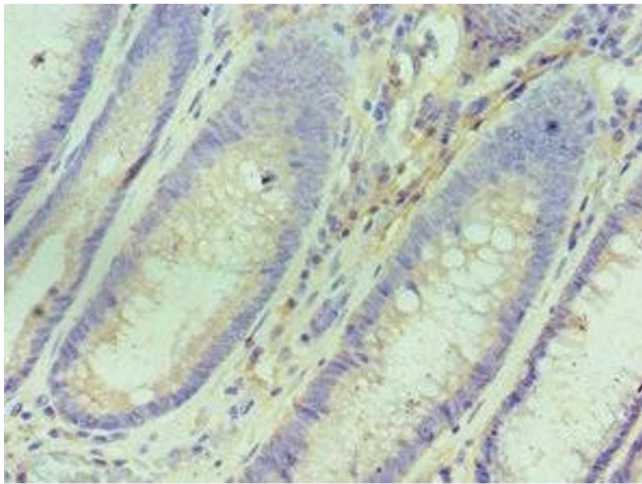
Buffer: PBS with 0.02 % sodium azide, 50 % glycerol, pH 7.3.

Preservative: Sodium azide

Precaution of Use: This product contains Sodium azide: a POISONOUS AND HAZARDOUS SUBSTANCE which should be handled by trained staff only.

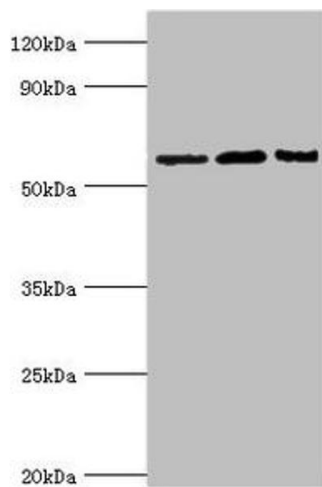
Storage: -20 °C,-80 °C

Storage Comment: Upon receipt, store at -20°C or -80°C. Avoid repeated freeze.



### Immunohistochemistry

**Image 1.** Immunohistochemistry of paraffin-embedded human colon cancer using ABIN7156763 at dilution of 1:100



### Western Blotting

**Image 2.** Western blot All lanes: Interleukin-10 receptor subunit alpha antibody at 8  $\mu$ g/mL Lane 1: Mouse heart tissue Lane 2: Hela whole cell lysate Lane 3: Mouse liver tissue Secondary Goat polyclonal to rabbit IgG at 1/10000 dilution Predicted band size: 63 kDa Observed band size: 63 kDa