

Datasheet for ABIN7156768  
**anti-IL1R2 antibody (AA 79-219)**[Go to Product page](#)

## 3 Images

## Overview

Quantity:	100 µg
Target:	IL1R2
Binding Specificity:	AA 79-219
Reactivity:	Human
Host:	Rabbit
Clonality:	Polyclonal
Conjugate:	This IL1R2 antibody is un-conjugated
Application:	Western Blotting (WB), ELISA, Immunohistochemistry (IHC), Immunofluorescence (IF)

## Product Details

Immunogen:	Recombinant Human Interleukin-10 receptor subunit beta protein (79-219AA)
Isotype:	IgG
Cross-Reactivity:	Human, Rat
Purification:	>95%, Protein G purified

## Target Details

Target:	IL1R2
Alternative Name:	IL1RB ( <a href="#">IL1R2 Products</a> )
Background:	Background: Shared cell surface receptor required for the activation of five class 2 cytokines: IL10, IL22, IL26, IL28, and IFNL1. The IFNLR1/IL10RB dimer is a receptor for the cytokine

## Target Details

ligands IFNL2 and IFNL3 and mediates their antiviral activity. The ligand/receptor complex stimulate the activation of the JAK/STAT signaling pathway leading to the expression of IFN-stimulated genes (ISG), which contribute to the antiviral state.

Aliases: Cd210 antibody, CDw210b antibody, CRF2 4 antibody, CRF2-4 antibody, CRFB4 antibody, Cytokine receptor class II antibody, Cytokine receptor class II CRF2 4 antibody, Cytokine receptor class-II member 4 antibody, Cytokine receptor family 2 member 4 antibody, Cytokine receptor family II member 4 antibody, D21S58 antibody, D21S66 antibody, l10R2\_HUMAN antibody, IL-10 receptor subunit beta antibody, IL-10R subunit 2 antibody, IL-10R subunit beta antibody, IL-10R2 antibody, IL-10RB antibody, IL10R2 antibody, IL10RB antibody, Interleukin 10 receptor beta antibody, Interleukin-10 receptor subunit 2 antibody, Interleukin-10 receptor subunit beta antibody

UniProt: [Q08334](#)

Pathways: [NF-kappaB Signaling](#)

## Application Details

Application Notes: Recommended dilution: WB:1:500-1:5000, IHC:1:500-1:1000, IF:1:50-1:200,

Restrictions: For Research Use only

## Handling

Format: Liquid

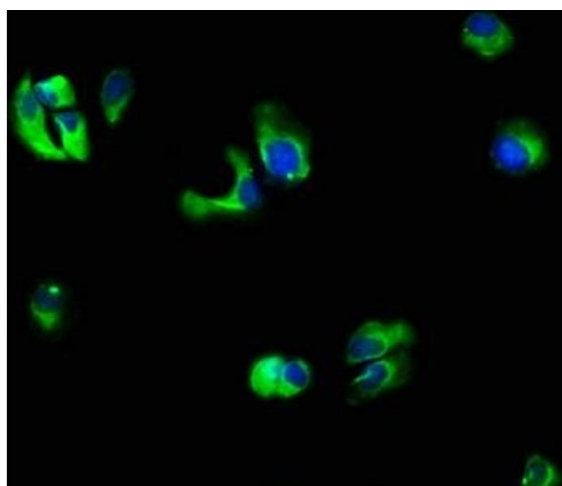
Buffer: Preservative: 0.03 % Proclin 300  
Constituents: 50 % Glycerol, 0.01M PBS, pH 7.4

Preservative: ProClin

Precaution of Use: This product contains ProClin: a POISONOUS AND HAZARDOUS SUBSTANCE which should be handled by trained staff only.

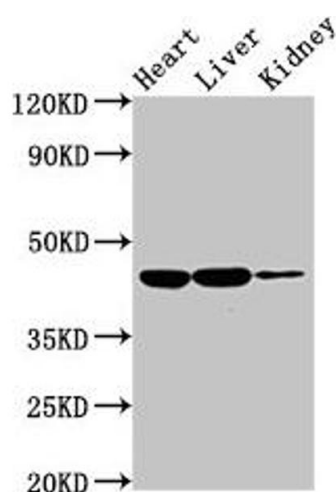
Storage: -20 °C, -80 °C

Storage Comment: Upon receipt, store at -20°C or -80°C. Avoid repeated freeze.



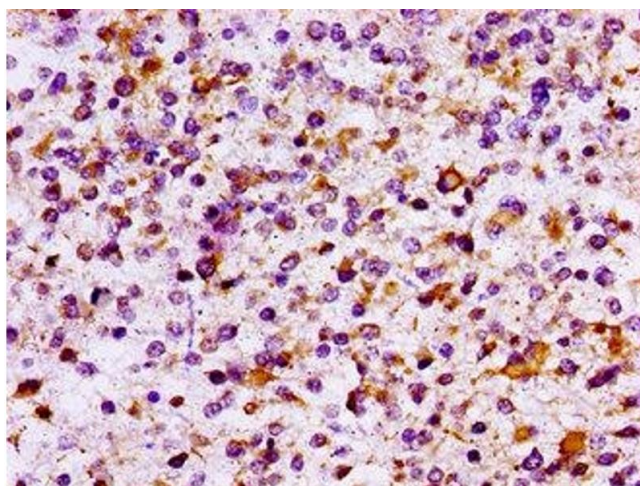
### Immunofluorescence

**Image 1.** Immunofluorescence staining of MCF-7 cells with ABIN7156768 at 1:66, counter-stained with DAPI. The cells were fixed in 4 % formaldehyde, permeabilized using 0.2 % Triton X-100 and blocked in 10 % normal Goat Serum. The cells were then incubated with the antibody overnight at 4 °C. The secondary antibody was Alexa Fluor 488-conjugated AffiniPure Goat Anti-Rabbit IgG(H+L).



### Western Blotting

**Image 2.** Western Blot Positive WB detected in: Rat heart tissue, Rat liver tissue, Rat kidney tissue All lanes: IL10RB antibody at 2 µg/mL Secondary Goat polyclonal to rabbit IgG at 1/50000 dilution Predicted band size: 37 kDa Observed band size: 45 kDa



### Immunohistochemistry

**Image 3.** IHC image of ABIN7156768 diluted at 1:100 and staining in paraffin-embedded human glioma performed on a Leica Bond™ system. After dewaxing and hydration, antigen retrieval was mediated by high pressure in a citrate buffer (pH 6.0). Section was blocked with 10 % normal goat serum 30 min at RT. Then primary antibody (1 % BSA) was incubated at 4 °C overnight. The primary is detected by a biotinylated secondary antibody and visualized using an HRP conjugated SP system.