



[Go to Product page](#)

Datasheet for ABIN7156848

anti-IL2 Receptor beta antibody (AA 48-177)

1 Image

Overview

| | |
|----------------------|--|
| Quantity: | 100 µL |
| Target: | IL2 Receptor beta (IL2RB) |
| Binding Specificity: | AA 48-177 |
| Reactivity: | Human |
| Host: | Rabbit |
| Clonality: | Polyclonal |
| Conjugate: | This IL2 Receptor beta antibody is un-conjugated |
| Application: | ELISA, Immunohistochemistry (IHC) |

Product Details

| | |
|-------------------|---|
| Immunogen: | Recombinant Human Interleukin-20 receptor subunit beta protein (48-177AA) |
| Isotype: | IgG |
| Cross-Reactivity: | Human |
| Purification: | Antigen Affinity Purified |

Target Details

| | |
|-------------------|--|
| Target: | IL2 Receptor beta (IL2RB) |
| Alternative Name: | IL2RB (IL2RB Products) |
| Background: | Background: The IL20RA/IL20RB dimer is a receptor for IL19, IL20 and IL24. The IL22RA1/IL20RB dimer is a receptor for IL20 and IL24. |

Target Details

Aliases: DIRS1 antibody, Fibronectin type III domain containing 6 antibody, FNDC6 antibody, I20RB_HUMAN antibody, IL 20R beta antibody, IL 20R2 antibody, IL-20 receptor subunit beta antibody, IL-20R-beta antibody, IL-20R2 antibody, IL-20RB antibody, IL20RB antibody, Interleukin 20 receptor beta antibody, Interleukin 20 receptor beta chain precursor antibody, Interleukin 20 receptor II antibody, Interleukin-20 receptor subunit beta antibody, MGC34923 antibody

UniProt: [Q6UXLO](#)

Pathways: [JAK-STAT Signaling](#), [Growth Factor Binding](#)

Application Details

Application Notes: Recommended dilution: IHC:1:20-1:200,

Restrictions: For Research Use only

Handling

Format: Liquid

Buffer: PBS with 0.02 % sodium azide, 50 % glycerol, pH 7.3.

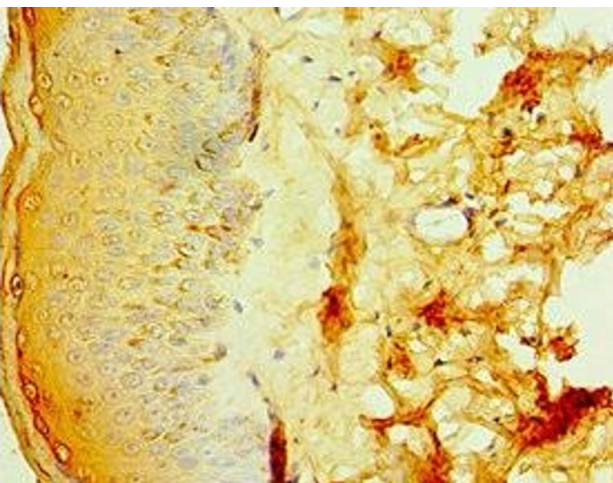
Preservative: Sodium azide

Precaution of Use: This product contains Sodium azide: a POISONOUS AND HAZARDOUS SUBSTANCE which should be handled by trained staff only.

Storage: -20 °C,-80 °C

Storage Comment: Upon receipt, store at -20°C or -80°C. Avoid repeated freeze.

Images



Immunohistochemistry

Image 1. Immunohistochemistry of paraffin-embedded human skin tissue using ABIN7156848 at dilution of 1:100