



Datasheet for ABIN7156851
anti-IL21 Receptor antibody (AA 20-240)



[Go to Product page](#)

1 Image

Overview

Quantity:	100 µL
Target:	IL21 Receptor (IL21R)
Binding Specificity:	AA 20-240
Reactivity:	Human
Host:	Rabbit
Clonality:	Polyclonal
Conjugate:	This IL21 Receptor antibody is un-conjugated
Application:	ELISA, Immunohistochemistry (IHC)

Product Details

Immunogen:	Recombinant Human Interleukin-21 receptor protein (20-240AA)
Isotype:	IgG
Cross-Reactivity:	Human
Purification:	Antigen Affinity Purified

Target Details

Target:	IL21 Receptor (IL21R)
Alternative Name:	IL21R (IL21R Products)
Background:	Background: This is a receptor for interleukin-21. Aliases: CD360 antibody, IL 21R antibody, IL-21 receptor antibody, IL-21R antibody, IL21

Target Details

receptor antibody, IL21R antibody, IL21R_HUMAN antibody, Interleukin 21 receptor antibody, Interleukin-21 receptor antibody, MGC10967 antibody, NILR antibody, Novel interleukin receptor antibody

UniProt: [Q9HBE5](#)

Pathways: [JAK-STAT Signaling](#)

Application Details

Application Notes: Recommended dilution: IHC:1:20-1:200,

Restrictions: For Research Use only

Handling

Format: Liquid

Buffer: PBS with 0.02 % sodium azide, 50 % glycerol, pH 7.3.

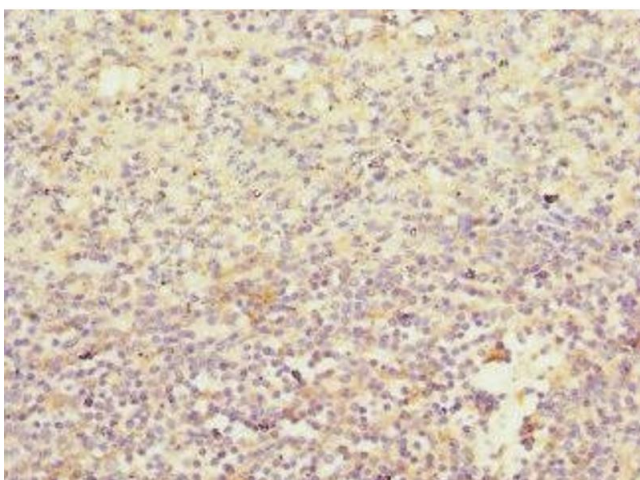
Preservative: Sodium azide

Precaution of Use: This product contains Sodium azide: a POISONOUS AND HAZARDOUS SUBSTANCE which should be handled by trained staff only.

Storage: -20 °C,-80 °C

Storage Comment: Upon receipt, store at -20°C or -80°C. Avoid repeated freeze.

Images



Immunohistochemistry

Image 1. Immunohistochemistry of paraffin-embedded human spleen tissue using ABIN7156851 at dilution of 1:100