

Datasheet for ABIN7156854

anti-IL22 Receptor alpha 1 antibody (AA 16-230)**3** Images[Go to Product page](#)

Overview

Quantity:	100 µL
Target:	IL22 Receptor alpha 1 (IL22RA1)
Binding Specificity:	AA 16-230
Reactivity:	Human
Host:	Rabbit
Clonality:	Polyclonal
Conjugate:	This IL22 Receptor alpha 1 antibody is un-conjugated
Application:	Western Blotting (WB), ELISA, Immunohistochemistry (IHC)

Product Details

Immunogen:	Recombinant Human Interleukin-22 receptor subunit alpha-1 protein (16-230AA)
Isotype:	IgG
Cross-Reactivity:	Human, Mouse
Purification:	Antigen Affinity Purified

Target Details

Target:	IL22 Receptor alpha 1 (IL22RA1)
Alternative Name:	IL22RA1 (IL22RA1 Products)
Background:	Background: Component of the receptor for IL20, IL22 and IL24. Component of IL22 receptor formed by IL22RA1 and IL10RB enabling IL22 signaling via JAK/STAT pathways. IL22 also

Target Details

induces activation of MAPK1/MAPK3 and Akt kinases pathways. Component of one of the receptor for IL20 and IL24 formed by IL22RA1 and IL20RB also signaling through STATs activation. Mediates IL24 antiangiogenic activity as well as IL24 inhibitory effect on endothelial cell tube formation and differentiation.

Aliases: CRF2 9 antibody, CRF2-9 antibody, Cytokine receptor class-II member 9 antibody, cytokine receptor classII member 9 antibody, Cytokine receptor family 2 member 9 antibody, I22R1_HUMAN antibody, IL-22 receptor subunit alpha-1 antibody, IL-22R-alpha-1 antibody, IL-22RA1 antibody, IL22 Receptor Alpha antibody, IL22R antibody, IL22R1 antibody, IL22ra1 antibody, ILTIF R1 chain antibody, Interleukin 22 Receptor alpha 1 antibody, Interleukin 22 Receptor antibody, Interleukin-22 receptor subunit alpha-1 antibody, ZcytoR11 antibody

UniProt: [Q8N6P7](#)

Application Details

Application Notes: Recommended dilution: WB:1:500-1:2000, IHC:1:20-1:200,

Restrictions: For Research Use only

Handling

Format: Liquid

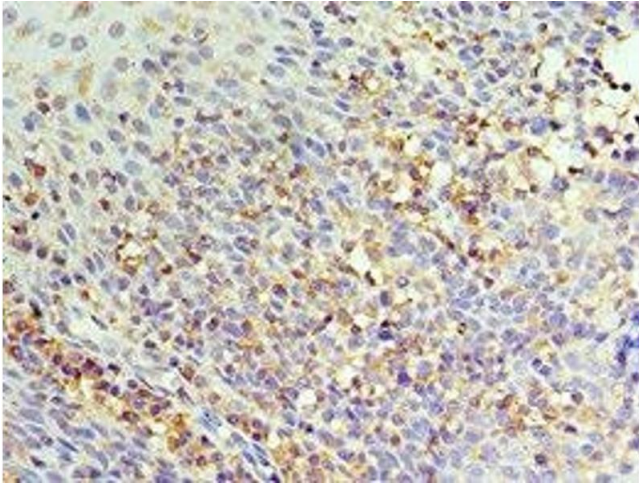
Buffer: PBS with 0.02 % sodium azide, 50 % glycerol, pH 7.3.

Preservative: Sodium azide

Precaution of Use: This product contains Sodium azide: a POISONOUS AND HAZARDOUS SUBSTANCE which should be handled by trained staff only.

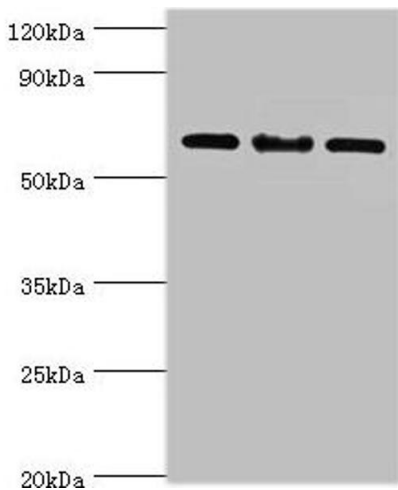
Storage: -20 °C,-80 °C

Storage Comment: Upon receipt, store at -20°C or -80°C. Avoid repeated freeze.



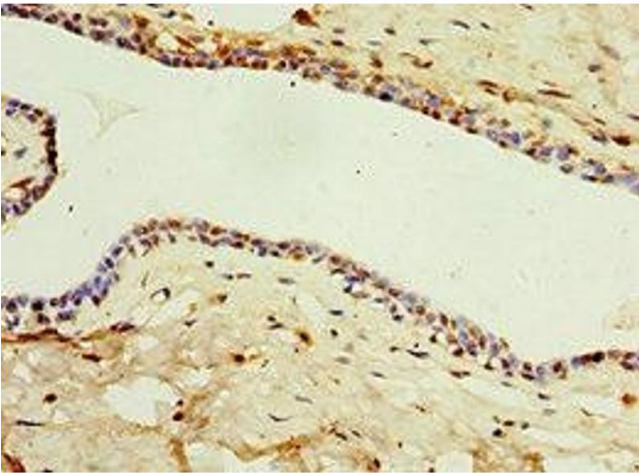
Immunohistochemistry

Image 1. Immunohistochemistry of paraffin-embedded human tonsil tissue using ABIN7156854 at dilution of 1:100



Western Blotting

Image 2. Western blot All lanes: IL22RA1 antibody at 10 μ g/mL Lane 1: Mouse spleen tissue Lane 2: HepG2 whole cell lysate Lane 3: 293T whole cell lysate Secondary Goat polyclonal to rabbit IgG at 1/10000 dilution Predicted band size: 63 kDa Observed band size: 63 kDa



Immunohistochemistry

Image 3. Immunohistochemistry of paraffin-embedded human breast cancer using ABIN7156854 at dilution of 1:100