

Datasheet for ABIN7156872  
**anti-IL-24 antibody (AA 52-207)**[Go to Product page](#)

## 2 Images

## Overview

Quantity:	100 µg
Target:	IL-24 (IL24)
Binding Specificity:	AA 52-207
Reactivity:	Human
Host:	Rabbit
Clonality:	Polyclonal
Conjugate:	This IL-24 antibody is un-conjugated
Application:	ELISA, Immunohistochemistry (IHC)

## Product Details

Immunogen:	Recombinant Human Interleukin-24 protein (52-207AA)
Isotype:	IgG
Cross-Reactivity:	Human
Purification:	>95%, Protein G purified

## Target Details

Target:	IL-24 (IL24)
Alternative Name:	IL24 ( <a href="#">IL24 Products</a> )
Background:	Background: Has antiproliferative properties on melanoma cells and may contribute to terminal cell differentiation.

## Target Details

Aliases: C49A antibody, FISP antibody, IL 24 antibody, IL 4 induced secreted protein antibody, IL-24 antibody, IL10B antibody, IL24 antibody, IL24\_HUMAN antibody, interleukin 24 antibody, Interleukin-24 antibody, MDA-7 antibody, MDA7 antibody, Melanocyte associated Mda 7 antibody, Melanoma differentiation association protein 7 antibody, Melanoma differentiation-associated gene 7 protein antibody, Mob5 antibody, ST16 antibody, Suppression of tumorigenicity 16 (melanoma differentiation) antibody, Suppression of tumorigenicity 16 antibody, Suppression of tumorigenicity 16 protein antibody

UniProt: [Q13007](#)

Pathways: [Cellular Response to Molecule of Bacterial Origin](#), [Positive Regulation of Endopeptidase Activity](#), [Autophagy](#)

## Application Details

Application Notes: Recommended dilution: IHC:1:1000-1:2000,

Restrictions: For Research Use only

## Handling

Format: Liquid

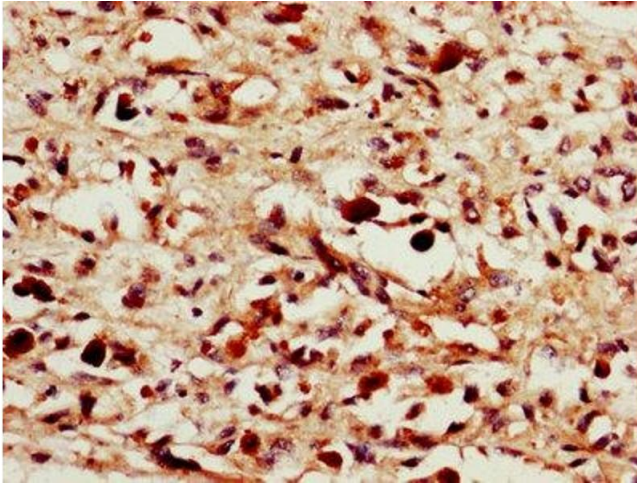
Buffer: Preservative: 0.03 % Proclin 300  
Constituents: 50 % Glycerol, 0.01M PBS, PH 7.4

Preservative: ProClin

Precaution of Use: This product contains ProClin: a POISONOUS AND HAZARDOUS SUBSTANCE which should be handled by trained staff only.

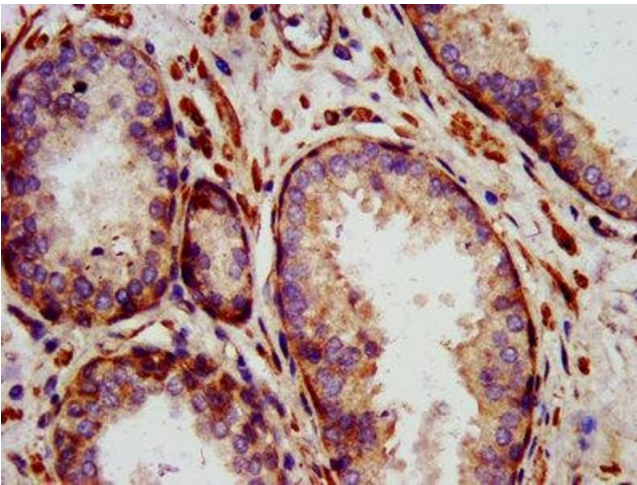
Storage: -20 °C, -80 °C

Storage Comment: Upon receipt, store at -20°C or -80°C. Avoid repeated freeze.



#### Immunohistochemistry

**Image 1.** IHC image of ABIN7156872 diluted at 1:1400 and staining in paraffin-embedded human melanoma performed on a Leica Bond™ system. After dewaxing and hydration, antigen retrieval was mediated by high pressure in a citrate buffer (pH 6.0). Section was blocked with 10% normal goat serum 30min at RT. Then primary antibody (1% BSA) was incubated at 4°C overnight. The primary is detected by a biotinylated secondary antibody and visualized using an HRP conjugated SP system.



#### Immunohistochemistry

**Image 2.** IHC image of ABIN7156872 diluted at 1:1400 and staining in paraffin-embedded human prostate cancer performed on a Leica Bond™ system. After dewaxing and hydration, antigen retrieval was mediated by high pressure in a citrate buffer (pH 6.0). Section was blocked with 10% normal goat serum 30min at RT. Then primary antibody (1% BSA) was incubated at 4°C overnight. The primary is detected by a biotinylated secondary antibody and visualized using an HRP conjugated SP system.