

Datasheet for ABIN7156880  
**anti-EBI3 antibody (AA 21-227)**[Go to Product page](#)

## 3 Images

## Overview

Quantity:	100 µg
Target:	EBI3 (IL-27b)
Binding Specificity:	AA 21-227
Reactivity:	Human
Host:	Rabbit
Clonality:	Polyclonal
Conjugate:	This EBI3 antibody is un-conjugated
Application:	Western Blotting (WB), ELISA, Immunohistochemistry (IHC)

## Product Details

Immunogen:	Recombinant Human Interleukin-27 subunit beta protein (21-227AA)
Isotype:	IgG
Cross-Reactivity:	Human
Purification:	>95%, Protein G purified

## Target Details

Target:	EBI3 (IL-27b)
Alternative Name:	EBI3 ( <a href="#">IL-27b Products</a> )
Target Type:	Viral Protein
Background:	Background: Associates with IL27 to form the IL-27 interleukin, a heterodimeric cytokine which

## Target Details

functions in innate immunity. IL-27 has pro- and anti-inflammatory properties, that can regulate T-helper cell development, suppress T-cell proliferation, stimulate cytotoxic T-cell activity, induce isotype switching in B-cells, and that has diverse effects on innate immune cells. Among its target cells are CD4 T-helper cells which can differentiate in type 1 effector cells (TH1), type 2 effector cells (TH2) and IL17 producing helper T-cells (TH17). It drives rapid clonal expansion of naive but not memory CD4 T-cells. It also strongly synergizes with IL-12 to trigger interferon-gamma/IFN-gamma production of naive CD4 T-cells, binds to the cytokine receptor WSX-1/TCCR. Another important role of IL-27 is its antitumor activity as well as its antiangiogenic activity with activation of production of antiangiogenic chemokines.

Aliases: cytokine receptor antibody, EBI3 antibody, EBV induced gene 3 protein antibody, EBV-induced gene 3 protein antibody, Epstein Barr virus induced 3 antibody, Epstein Barr virus induced gene 3 antibody, Epstein Barr virus induced gene 3 protein antibody, Epstein-Barr virus-induced gene 3 protein antibody, IL 27 subunit beta antibody, IL 27B antibody, IL-27 subunit beta antibody, IL-27B antibody, IL27 subunit antibody, IL27 subunit beta antibody, IL27B antibody, IL27B\_HUMAN antibody, IL35 subunit antibody, interleukin 27 subunit beta antibody, Interleukin-27 subunit beta antibody

UniProt: [Q14213](#)

## Application Details

Application Notes: Recommended dilution: WB:1:500-1:5000, IHC:1:20-1:200,

Restrictions: For Research Use only

## Handling

Format: Liquid

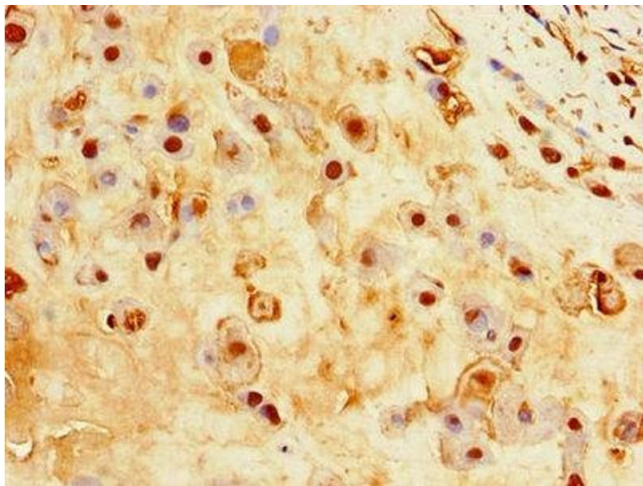
Buffer: Preservative: 0.03 % Proclin 300  
Constituents: 50 % Glycerol, 0.01M PBS, PH 7.4

Preservative: ProClin

Precaution of Use: This product contains ProClin: a POISONOUS AND HAZARDOUS SUBSTANCE which should be handled by trained staff only.

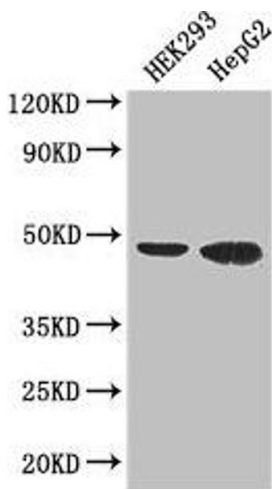
Storage: -20 °C,-80 °C

Storage Comment: Upon receipt, store at -20°C or -80°C. Avoid repeated freeze.



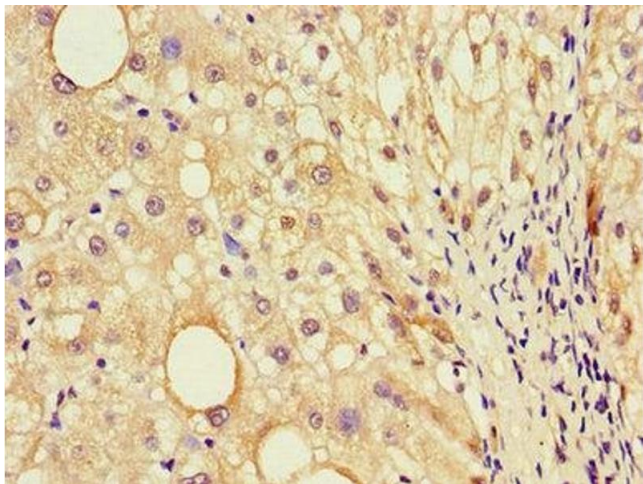
#### Immunohistochemistry

**Image 1.** Immunohistochemistry of paraffin-embedded human placenta tissue using ABIN7156880 at dilution of 1:100



#### Western Blotting

**Image 2.** Western Blot Positive WB detected in: HEK293 whole cell lysate, HepG2 whole cell lysate All lanes: EBI3 antibody at 3 µg/mL Secondary Goat polyclonal to rabbit IgG at 1/50000 dilution Predicted band size: 26 kDa Observed band size: 48 kDa



#### Immunohistochemistry

**Image 3.** Immunohistochemistry of paraffin-embedded human liver cancer using ABIN7156880 at dilution of 1:100