

Datasheet for ABIN7156903
anti-IL36A/IL1F6 antibody (AA 1-158)[Go to Product page](#)

1 Image

Overview

Quantity:	100 µL
Target:	IL36A/IL1F6 (IL1F6)
Binding Specificity:	AA 1-158
Reactivity:	Human
Host:	Rabbit
Clonality:	Polyclonal
Conjugate:	This IL36A/IL1F6 antibody is un-conjugated
Application:	ELISA, Immunohistochemistry (IHC)

Product Details

Immunogen:	Recombinant Human Interleukin-36 alpha protein (1-158AA)
Isotype:	IgG
Cross-Reactivity:	Human
Purification:	Antigen Affinity Purified

Target Details

Target:	IL36A/IL1F6 (IL1F6)
Alternative Name:	IL36A (IL1F6 Products)
Background:	Background: Cytokine that binds to and signals through the IL1RL2/IL-36R receptor which in turn activates NF-kappa-B and MAPK signaling pathways in target cells linked to a pro-

Target Details

inflammatory response. Part of the IL-36 signaling system that is thought to be present in epithelial barriers and to take part in local inflammatory response, similar to the IL-1 system with which it shares the coreceptor IL1RAP. Seems to be involved in skin inflammatory response by acting on keratinocytes, dendritic cells and indirectly on T-cells to drive tissue infiltration, cell maturation and cell proliferation. In cultured keratinocytes induces the expression of macrophage, T-cell, and neutrophil chemokines, such as CCL3, CCL4, CCL5, CCL2, CCL17, CCL22, CL20, CCL5, CCL2, CCL17, CCL22, CXCL8, CCL20 and CXCL1, and the production of proinflammatory cytokines such as TNF-alpha, IL-8 and IL-6. In cultured monocytes upregulates expression of IL-1A, IL-1B and IL-6. In myeloid dendritic cells involved in cell maturation by upregulating surface expression of CD83, CD86 and HLA-DR. In monocyte-derived dendritic cells facilitates dendritic cell maturation and drives T-cell proliferation. May play a role in proinflammatory effects in the lung.

Aliases: FIL1 antibody, FIL1 epsilon antibody, FIL1(EPSILON) antibody, FIL1E antibody, IL 1 epsilon antibody, IL 1F6 antibody, IL 1H1 antibody, IL-1 epsilon antibody, IL-1F6 antibody, IL1E antibody, IL1F6 antibody, IL1F6_HUMAN antibody, IL1RP2 antibody, IL36 alpha antibody, IL36A antibody, Interleukin 1 epsilon antibody, Interleukin 1 family member 6 (epsilon) antibody, Interleukin 1 family member 6 antibody, Interleukin 36 alpha antibody, Interleukin-1 epsilon antibody, Interleukin-1 family member 6 antibody, MGC129552 antibody, MGC129553 antibody, MGC151479 antibody, MGC151481 antibody, OTTMUSP00000012798 antibody, RP23-176J12.4 antibody

UniProt: [Q9UHA7](#)

Pathways: [Cancer Immune Checkpoints](#)

Application Details

Application Notes: Recommended dilution: IHC:1:20-1:200,

Restrictions: For Research Use only

Handling

Format: Liquid

Buffer: PBS with 0.02 % sodium azide, 50 % glycerol, pH 7.3.

Preservative: Sodium azide

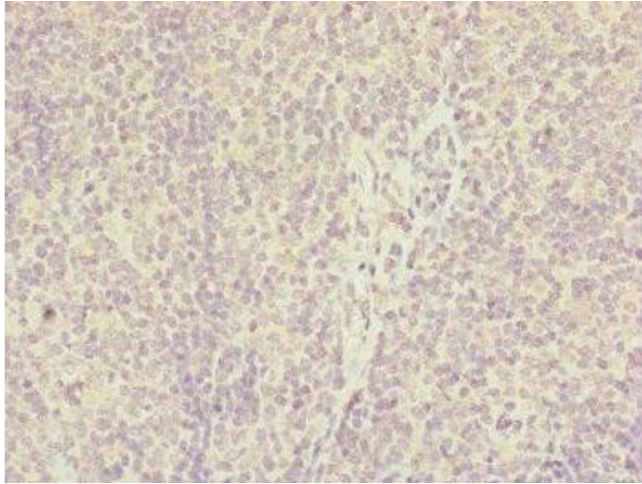
Precaution of Use: This product contains Sodium azide: a POISONOUS AND HAZARDOUS SUBSTANCE which should be handled by trained staff only.

Handling

Storage: -20 °C, -80 °C

Storage Comment: Upon receipt, store at -20°C or -80°C. Avoid repeated freeze.

Images



Immunohistochemistry

Image 1. Immunohistochemistry of paraffin-embedded human tonsil tissue using ABIN7156903 at dilution of 1:100