

Datasheet for ABIN7156905
anti-IL1F9 antibody (AA 1-169)[Go to Product page](#)

2 Images

Overview

Quantity:	100 µL
Target:	IL1F9
Binding Specificity:	AA 1-169
Reactivity:	Human
Host:	Rabbit
Clonality:	Polyclonal
Conjugate:	This IL1F9 antibody is un-conjugated
Application:	Immunohistochemistry (IHC), ELISA

Product Details

Immunogen:	Recombinant Human Interleukin-36 gamma protein (1-169AA)
Isotype:	IgG
Cross-Reactivity:	Human
Purification:	Antigen Affinity Purified

Target Details

Target:	IL1F9
Alternative Name:	IL36G (IL1F9 Products)
Background:	Background: Cytokine that binds to and signals through the IL1RL2/IL-36R receptor which in turn activates NF-kappa-B and MAPK signaling pathways in target cells. Part of the IL-36

Target Details

signaling system that is thought to be present in epithelial barriers and to take part in local inflammatory response, similar to the IL-1 system with which it shares the coreceptor IL1RAP. Seems to be involved in skin inflammatory response by acting on keratinocytes, dendritic cells and indirectly on T-cells to drive tissue infiltration, cell maturation and cell proliferation. In cultured keratinocytes induces the expression of macrophage, T-cell, and neutrophil chemokines, such as CCL3, CCL4, CCL5, CCL2, CCL17, CCL22, CCL20, CCL5, CCL2, CCL17, CCL22, CXCL8, CCL20 and CXCL1, also stimulates its own expression and that of the prototypic cutaneous proinflammatory parameters TNF-alpha, S100A7/psoriasin and inducible NOS. May play a role in proinflammatory responses during particular neutrophilic airway inflammation: activates mitogen-activated protein kinases and NF-kappa B in primary lung fibroblasts, and stimulates the expression of IL-8 and CXCL3 and Th17 chemokine CCL20 in lung fibroblasts. May be involved in the innate immune response to fungal pathogens, such as *Aspergillus fumigatus*.

Aliases: IL 1 epsilon antibody, IL 1 related protein 2 antibody, IL 1(EPSILON) antibody, IL 1F9 antibody, IL 1H1 antibody, IL 1RP2 antibody, IL-1 epsilon antibody, IL-1-related protein 2 antibody, IL-1F9 antibody, IL-1H1 antibody, IL-1RP2 antibody, IL1E antibody, IL1f9 antibody, IL1F9_HUMAN antibody, IL1H1 antibody, IL1RP2 antibody, IL36 gamma antibody, IL36G antibody, Interleukin 1 epsilon antibody, Interleukin 1 family member 9 antibody, Interleukin 1 homolog 1 antibody, Interleukin 1 related protein 2 antibody, Interleukin 36 gamma antibody, Interleukin-1 epsilon antibody, Interleukin-1 family member 9 antibody, Interleukin-1 homolog 1 antibody

UniProt: [Q9NZH8](#)

Application Details

Application Notes: Recommended dilution: IHC:1:20-1:200,

Restrictions: For Research Use only

Handling

Format: Liquid

Buffer: PBS with 0.02 % sodium azide, 50 % glycerol, pH 7.3.

Preservative: Sodium azide

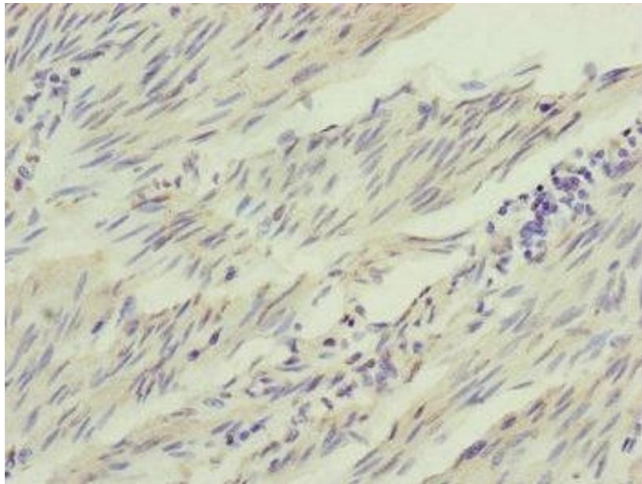
Precaution of Use: This product contains Sodium azide: a POISONOUS AND HAZARDOUS SUBSTANCE which should be handled by trained staff only.

Handling

Storage: -20 °C, -80 °C

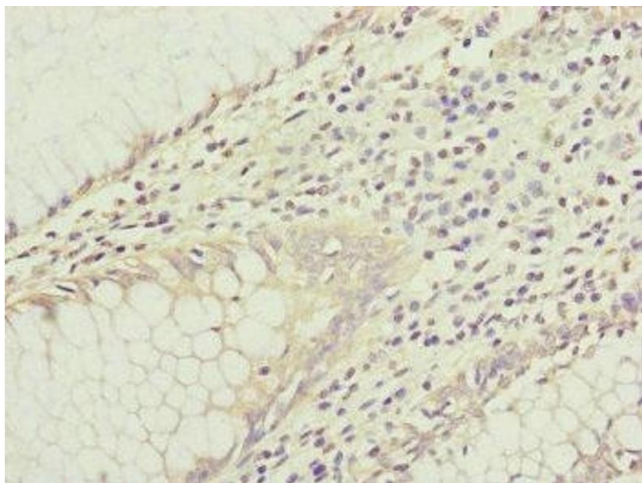
Storage Comment: Upon receipt, store at -20°C or -80°C. Avoid repeated freeze.

Images



Immunohistochemistry

Image 1. Immunohistochemistry of paraffin-embedded human bladder cancer using ABIN7156905 at dilution of 1:100



Immunohistochemistry

Image 2. Immunohistochemistry of paraffin-embedded human colon cancer using ABIN7156905 at dilution of 1:100