



[Go to Product page](#)

Datasheet for ABIN7156945
anti-IMPG2 antibody (AA 616-759)

1 Image

Overview

Quantity:	100 µg
Target:	IMPG2
Binding Specificity:	AA 616-759
Reactivity:	Human
Host:	Rabbit
Clonality:	Polyclonal
Conjugate:	This IMPG2 antibody is un-conjugated
Application:	ELISA, Immunofluorescence (IF)

Product Details

Immunogen:	Recombinant Human Interphotoreceptor matrix proteoglycan 2 protein (616-759AA)
Isotype:	IgG
Cross-Reactivity:	Human
Purification:	>95%, Protein G purified

Target Details

Target:	IMPG2
Alternative Name:	IMPG2 (IMPG2 Products)
Background:	Background: Chondroitin sulfate- and hyaluronan-binding proteoglycan involved in the organization of interphotoreceptor matrix, may participate in the maturation and maintenance

Target Details

of the light-sensitive photoreceptor outer segment. Binds heparin.

Aliases: IMPG2 antibody, IPM200 antibody, Interphotoreceptor matrix proteoglycan 2 antibody, Interphotoreceptor matrix proteoglycan of 200 kDa antibody, IPM 200 antibody, Sialoprotein associated with cones and rods proteoglycan antibody, Spacrcan antibody

UniProt: [Q9BZV3](#)

Application Details

Application Notes: Recommended dilution: IF:1:50-1:200,

Restrictions: For Research Use only

Handling

Format: Liquid

Buffer: Preservative: 0.03 % Proclin 300
Constituents: 50 % Glycerol, 0.01M PBS, pH 7.4

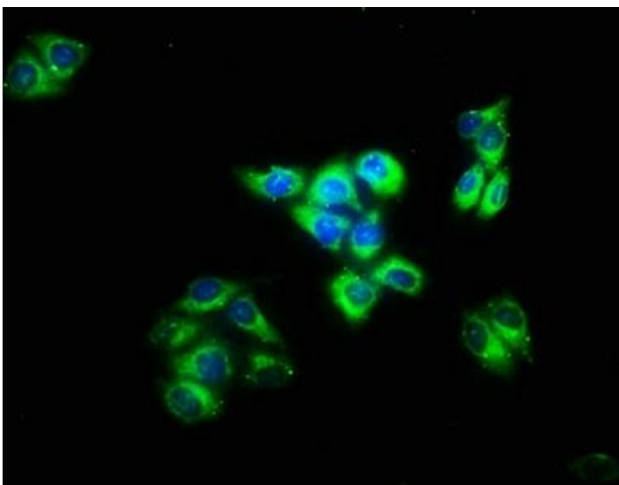
Preservative: ProClin

Precaution of Use: This product contains ProClin: a POISONOUS AND HAZARDOUS SUBSTANCE which should be handled by trained staff only.

Storage: -20 °C,-80 °C

Storage Comment: Upon receipt, store at -20°C or -80°C. Avoid repeated freeze.

Images



Immunofluorescence

Image 1. Immunofluorescence staining of HeLa cells with ABIN7156945 at 1:133, counter-stained with DAPI. The cells were fixed in 4 % formaldehyde, permeabilized using 0.2 % Triton X-100 and blocked in 10 % normal Goat Serum. The cells were then incubated with the antibody overnight at 4 °C. The secondary antibody was Alexa Fluor 488-conjugated AffiniPure Goat Anti-Rabbit IgG(H+L).