

Datasheet for ABIN7156949
anti-ITSN1 antibody (AA 773-916)

2 Images

[Go to Product page](#)

Overview

Quantity:	100 µg
Target:	ITSN1
Binding Specificity:	AA 773-916
Reactivity:	Human
Host:	Rabbit
Clonality:	Polyclonal
Conjugate:	This ITSN1 antibody is un-conjugated
Application:	Western Blotting (WB), ELISA, Immunohistochemistry (IHC)

Product Details

Immunogen:	Recombinant Human Intersectin-1 protein (773-916AA)
Isotype:	IgG
Cross-Reactivity:	Human
Purification:	>95%, Protein G purified

Target Details

Target:	ITSN1
Alternative Name:	ITSN1 (ITSN1 Products)
Background:	Background: Acts as guanine nucleotide exchange factor (GEF) specific for the CDC42 GTPase (By similarity). Adapter protein that may provide indirect link between the endocytic membrane

Target Details

traffic and the actin assembly machinery. May regulate the formation of clathrin-coated vesicles. Involved in endocytosis of integrin beta-1 (ITGB1) and transferrin receptor (TFR), internalization of ITGB1 as DAB2-dependent cargo but not TFR may involve association with DAB2. Isoform 1 could be involved in brain-specific synaptic vesicle recycling. Inhibits ARHGAP31 activity toward RAC1.

Aliases: Human intersectin SH3 domain containing protein SH3P17 antibody, Intersectin 1 SH3 domain protein antibody, intersectin 1 short form variant 3 antibody, intersectin 1 short form variant, 11 antibody, Intersectin short form antibody, intersectin short variant 12 antibody, Intersectin-1 antibody, Intersectin1 antibody, ITSN 1 antibody, ITSN antibody, itsn1 antibody, ITSN1_HUMAN antibody, MGC134948 antibody, MGC134949 antibody, OTTHUMP00000067855 antibody, OTTHUMP00000067856 antibody, OTTHUMP00000067857 antibody, OTTHUMP00000194810 antibody, OTTHUMP00000194811 antibody, OTTHUMP00000194812 antibody, OTTHUMP00000206688 antibody, SH3 domain containing protein 1A antibody, SH3 domain protein 1A antibody, SH3 domain-containing protein 1A antibody, SH3D1A antibody, SH3P17 antibody, Src homology 3 domain containing protein antibody

UniProt: [Q15811](#)

Pathways: [Neurotrophin Signaling Pathway](#)

Application Details

Application Notes: Recommended dilution: WB:1:500-1:5000, IHC:1:200-1:500,

Restrictions: For Research Use only

Handling

Format: Liquid

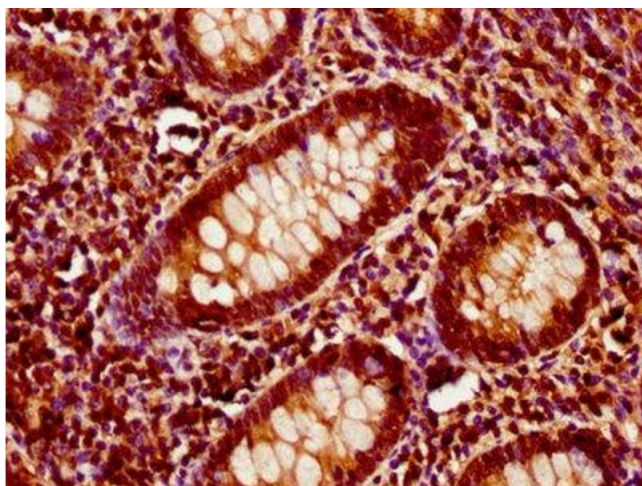
Buffer: Preservative: 0.03 % Proclin 300
Constituents: 50 % Glycerol, 0.01M PBS, pH 7.4

Preservative: ProClin

Precaution of Use: This product contains ProClin: a POISONOUS AND HAZARDOUS SUBSTANCE which should be handled by trained staff only.

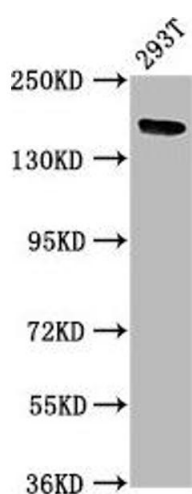
Storage: -20 °C,-80 °C

Storage Comment: Upon receipt, store at -20°C or -80°C. Avoid repeated freeze.



Immunohistochemistry

Image 1. IHC image of ABIN7156949 diluted at 1:400 and staining in paraffin-embedded human appendix tissue performed on a Leica Bond™ system. After dewaxing and hydration, antigen retrieval was mediated by high pressure in a citrate buffer (pH 6.0). Section was blocked with 10% normal goat serum 30min at RT. Then primary antibody (1% BSA) was incubated at 4°C overnight. The primary is detected by a biotinylated secondary antibody and visualized using an HRP conjugated SP system.



Western Blotting

Image 2. Western Blot Positive WB detected in: 293T whole cell lysate All lanes: ITS1 antibody at 5 µg/mL Secondary Goat polyclonal to rabbit IgG at 1/50000 dilution Predicted band size: 196, 138, 130, 188, 116, 195, 189, 134, 127, 126, 105 kDa Observed band size: 196 kDa