



[Go to Product page](#)

Datasheet for ABIN7156961

## anti-Intestinal Alkaline Phosphatase antibody (AA 26-500)

### 1 Image

#### Overview

Quantity:	100 µg
Target:	Intestinal Alkaline Phosphatase (ALPI)
Binding Specificity:	AA 26-500
Reactivity:	Human
Host:	Rabbit
Clonality:	Polyclonal
Conjugate:	This Intestinal Alkaline Phosphatase antibody is un-conjugated
Application:	Western Blotting (WB), ELISA

#### Product Details

Immunogen:	Recombinant Human Intestinal-type alkaline phosphatase protein (26-500AA)
Isotype:	IgG
Cross-Reactivity:	Human
Purification:	>95%, Protein G purified

#### Target Details

Target:	Intestinal Alkaline Phosphatase (ALPI)
Alternative Name:	ALPI ( <a href="#">ALPI Products</a> )
Background:	Alkaline phosphatase intestinal antibody, Alkaline phosphomonoesterase antibody, Alpi antibody, Glycerophosphatase antibody, IAP antibody, Intestinal alkaline phosphatase antibody,

## Target Details

Intestinal-type alkaline phosphatase antibody, Kasahara isozyme antibody,  
OTTHUMP00000164357 antibody, PPBI\_HUMAN antibody

UniProt: [P09923](#)

## Application Details

Application Notes: Recommended dilution: WB:1:1000-1:5000,

Restrictions: For Research Use only

## Handling

Format: Liquid

Buffer: Preservative: 0.03 % Proclin 300  
Constituents: 50 % Glycerol, 0.01M PBS, PH 7.4

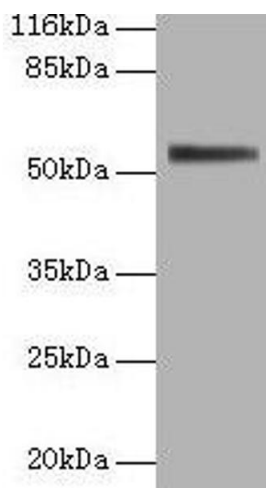
Preservative: ProClin

Precaution of Use: This product contains ProClin: a POISONOUS AND HAZARDOUS SUBSTANCE which should be handled by trained staff only.

Storage: -20 °C,-80 °C

Storage Comment: Upon receipt, store at -20°C or -80°C. Avoid repeated freeze.

## Images



### Western Blotting

**Image 1.** Western blot All lanes: ALPI antibody at 2 µg/mL + 293T whole cell lysate Secondary Goat polyclonal to rabbit IgG at 1/10000 dilution Predicted band size: 57 kDa  
Observed band size: 57 kDa