



[Go to Product page](#)

Datasheet for ABIN7157008
anti-Inversin antibody (AA 1-101)

3 Images

Overview

Quantity:	100 µg
Target:	Inversin (INVS)
Binding Specificity:	AA 1-101
Reactivity:	Human
Host:	Rabbit
Clonality:	Polyclonal
Conjugate:	This Inversin antibody is un-conjugated
Application:	Western Blotting (WB), ELISA, Immunohistochemistry (IHC), Immunofluorescence (IF)

Product Details

Immunogen:	Recombinant Human Inversin protein (1-101AA)
Isotype:	IgG
Cross-Reactivity:	Human
Purification:	>95%, Protein G purified

Target Details

Target:	Inversin (INVS)
Alternative Name:	INVS (INVS Products)
Background:	Background: Required for normal renal development and establishment of left-right axis. Probably acts as a molecular switch between different Wnt signaling pathways. Inhibits the

Target Details

canonical Wnt pathway by targeting cytoplasmic disheveled (DVL1) for degradation by the ubiquitin-proteasome. This suggests that it is required in renal development to oppose the repression of terminal differentiation of tubular epithelial cells by Wnt signaling. Involved in the organization of apical junctions in kidney cells together with NPHP1, NPHP4 and RPGRIP1L/NPHP8 (By similarity). Does not seem to be strictly required for ciliogenesis (By similarity).

Aliases: INVS antibody, INV antibody, NPHP2 antibody, Inversin antibody, Inversion of embryo turning homolog antibody, Nephrocystin-2 antibody

UniProt: [Q9Y283](#)

Application Details

Application Notes: Recommended dilution: WB:1:1000-1:5000, IHC:1:20-1:200, IF:1:50-1:200,

Restrictions: For Research Use only

Handling

Format: Liquid

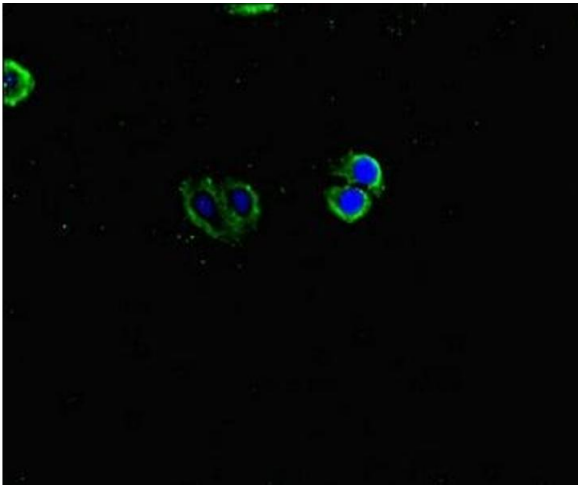
Buffer: Preservative: 0.03 % Proclin 300
Constituents: 50 % Glycerol, 0.01M PBS, PH 7.4

Preservative: ProClin

Precaution of Use: This product contains ProClin: a POISONOUS AND HAZARDOUS SUBSTANCE which should be handled by trained staff only.

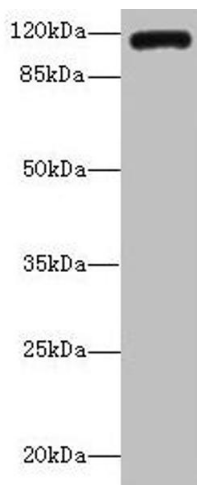
Storage: -20 °C,-80 °C

Storage Comment: Upon receipt, store at -20°C or -80°C. Avoid repeated freeze.



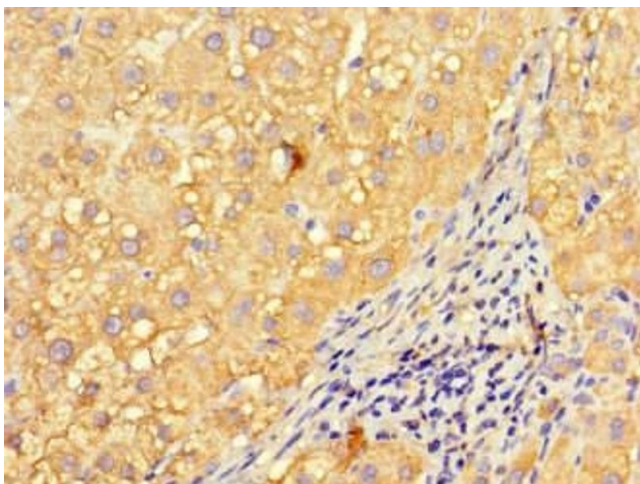
Immunofluorescence

Image 1. Immunofluorescent analysis of HepG2 cells using ABIN7157008 at dilution of 1:100 and Alexa Fluor 488-conjugated AffiniPure Goat Anti-Rabbit IgG(H+L)



Western Blotting

Image 2. Western blot All lanes: INVS antibody IgG at 14 μ g/mL + K562 whole cell lysate Secondary Goat polyclonal to rabbit IgG at 1/10000 dilution Predicted band size: 118, 100, 11 kDa Observed band size: 118 kDa



Immunohistochemistry

Image 3. Immunohistochemistry of paraffin-embedded human liver cancer using ABIN7157008 at dilution of 1:100