

## Datasheet for ABIN7157026 anti-IQCB1 antibody (AA 445-598)

### 3 Images



[Go to Product page](#)

### Overview

Quantity:	100 µg
Target:	IQCB1
Binding Specificity:	AA 445-598
Reactivity:	Human
Host:	Rabbit
Clonality:	Polyclonal
Conjugate:	This IQCB1 antibody is un-conjugated
Application:	Western Blotting (WB), ELISA, Immunohistochemistry (IHC)

### Product Details

Immunogen:	Recombinant Human IQ calmodulin-binding motif-containing protein 1 protein (445-598AA)
Isotype:	IgG
Cross-Reactivity:	Human, Mouse, Rat
Purification:	>95%, Protein G purified

### Target Details

Target:	IQCB1
Alternative Name:	IQCB1 ( <a href="#">IQCB1 Products</a> )
Background:	Background: Involved in ciliogenesis. The function in an early step in cilia formation depends on its association with CEP290/NPHP6 (PubMed:21565611, PubMed:23446637). Involved in

## Target Details

regulation of the BBSome complex integrity, specifically for presence of BBS2 and BBS5 in the complex, and in ciliary targeting of selected BBSome cargos. May play a role in controlling entry of the BBSome complex to cilia possibly implicating CEP290/NPHP6 (PubMed:25552655).

Aliases: IQ calmodulin-binding motif containing 1 antibody, IQ calmodulin-binding motif-containing protein 1 antibody, IQ motif containing B1 antibody, Iqcb1 antibody, IQCB1\_HUMAN antibody, KIAA0036 antibody, Nephrocystin-5 antibody, NPHP5 antibody, p53 and DNA damage-regulated IQ motif protein antibody, SLSN5 antibody

UniProt: [Q15051](#)

## Application Details

Application Notes: Recommended dilution: WB:1:500-1:5000, IHC:1:20-1:200,

Restrictions: For Research Use only

## Handling

Format: Liquid

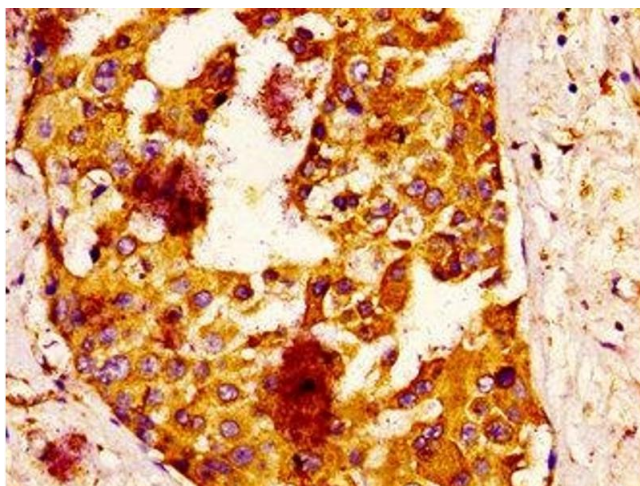
Buffer: Preservative: 0.03 % Proclin 300  
Constituents: 50 % Glycerol, 0.01M PBS, pH 7.4

Preservative: ProClin

Precaution of Use: This product contains ProClin: a POISONOUS AND HAZARDOUS SUBSTANCE which should be handled by trained staff only.

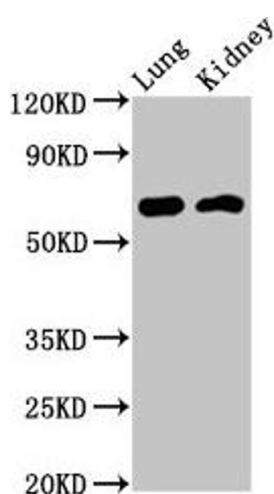
Storage: -20 °C, -80 °C

Storage Comment: Upon receipt, store at -20°C or -80°C. Avoid repeated freeze.



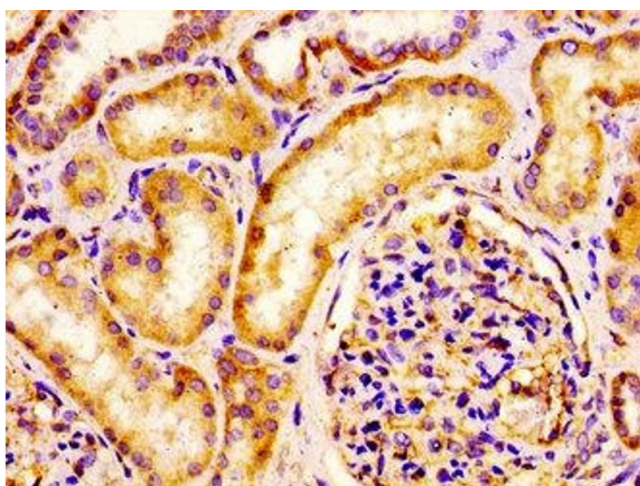
#### Immunohistochemistry

**Image 1.** IHC image of ABIN7157026 diluted at 1:100 and staining in paraffin-embedded human breast cancer performed on a Leica Bond™ system. After dewaxing and hydration, antigen retrieval was mediated by high pressure in a citrate buffer (pH 6.0). Section was blocked with 10 % normal goat serum 30 min at RT. Then primary antibody (1 % BSA) was incubated at 4 °C overnight. The primary is detected by a biotinylated secondary antibody and visualized using an HRP conjugated ABC system.



#### Western Blotting

**Image 2.** Western Blot Positive WB detected in: Rat lung tissue, Mouse kidney tissue All lanes: IQCB1 antibody at 3.2 µg/mL Secondary Goat polyclonal to rabbit IgG at 1/50000 dilution Predicted band size: 69, 54, 35 kDa Observed band size: 69 kDa



#### Immunohistochemistry

**Image 3.** IHC image of ABIN7157026 diluted at 1:100 and staining in paraffin-embedded human kidney tissue performed on a Leica Bond™ system. After dewaxing and hydration, antigen retrieval was mediated by high pressure in a citrate buffer (pH 6.0). Section was blocked with 10 % normal goat serum 30 min at RT. Then primary antibody (1 % BSA) was incubated at 4 °C overnight. The primary is detected by a biotinylated secondary antibody and visualized using an HRP conjugated SP system.