



[Go to Product page](#)

Datasheet for ABIN7157095
anti-ICA1L antibody (AA 1-187)

1 Image

Overview

Quantity:	100 µg
Target:	ICA1L
Binding Specificity:	AA 1-187
Reactivity:	Human
Host:	Rabbit
Clonality:	Polyclonal
Conjugate:	This ICA1L antibody is un-conjugated
Application:	ELISA, Western Blotting (WB)

Product Details

Immunogen:	Recombinant Human Islet cell autoantigen 1-like protein (1-187AA)
Isotype:	IgG
Cross-Reactivity:	Human
Purification:	>95%, Protein G purified

Target Details

Target:	ICA1L
Alternative Name:	ICA1L (ICA1L Products)
Background:	ICA1L antibody, ALS2CR14 antibody, ALS2CR15 antibody, Islet cell autoantigen 1-like protein antibody, Amyotrophic lateral sclerosis 2 chromosomal region candidate gene 14 protein

Target Details

antibody, Amyotrophic lateral sclerosis 2 chromosomal region candidate gene 15 protein
antibody

UniProt: [Q8NDH6](#)

Application Details

Application Notes: Recommended dilution: WB:1:500-1:2000,

Restrictions: For Research Use only

Handling

Format: Liquid

Buffer: Preservative: 0.03 % Proclin 300
Constituents: 50 % Glycerol, 0.01M PBS, PH 7.4

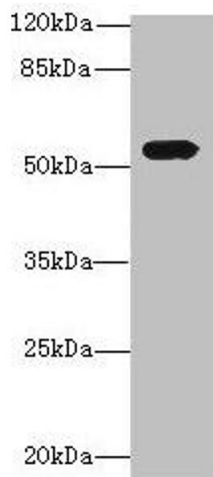
Preservative: ProClin

Precaution of Use: This product contains ProClin: a POISONOUS AND HAZARDOUS SUBSTANCE which should be handled by trained staff only.

Storage: -20 °C,-80 °C

Storage Comment: Upon receipt, store at -20°C or -80°C. Avoid repeated freeze.

Images



Western Blotting

Image 1. Western blot All lanes: ICA1L antibody at 1.2 μ g/mL + MCF-7 whole cell lysate Secondary Goat polyclonal to rabbit at 1/10000 dilution Predicted band size: 55, 22 kDa
Observed band size: 55 kDa