



[Go to Product page](#)

Datasheet for ABIN7157103
anti-ISOC1 antibody (AA 155-298)

2 Images

Overview

Quantity:	100 µg
Target:	ISOC1
Binding Specificity:	AA 155-298
Reactivity:	Human
Host:	Rabbit
Clonality:	Polyclonal
Conjugate:	This ISOC1 antibody is un-conjugated
Application:	ELISA, Western Blotting (WB), Immunohistochemistry (IHC)

Product Details

Immunogen:	Recombinant Human Isochorismatase domain-containing protein 1 protein (155-298AA)
Isotype:	IgG
Cross-Reactivity:	Human
Purification:	>95%, Protein G purified

Target Details

Target:	ISOC1
Alternative Name:	ISOC1 (ISOC1 Products)
Background:	Background: cytoplasm, extracellular exosome, peroxisome Aliases: ISOC1 antibody, CGI-111 antibody, Isochorismatase domain-containing protein 1

Target Details

antibody

UniProt: [Q96CN7](#)

Application Details

Application Notes: Recommended dilution: WB:1:500-1:5000, IHC:1:20-1:200,

Restrictions: For Research Use only

Handling

Format: Liquid

Buffer: Preservative: 0.03 % Proclin 300
Constituents: 50 % Glycerol, 0.01M PBS, pH 7.4

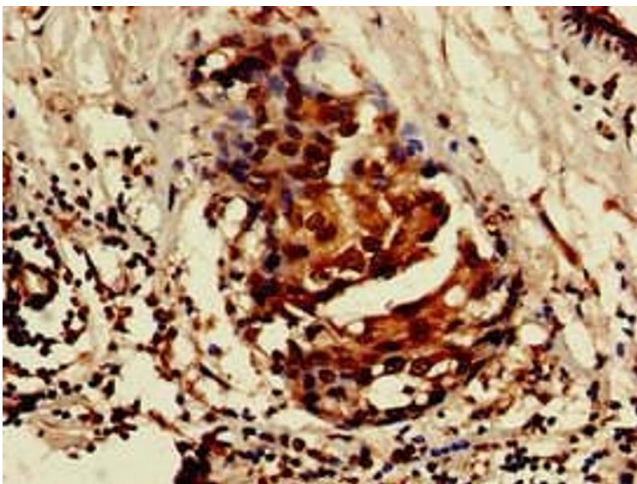
Preservative: ProClin

Precaution of Use: This product contains ProClin: a POISONOUS AND HAZARDOUS SUBSTANCE which should be handled by trained staff only.

Storage: -20 °C,-80 °C

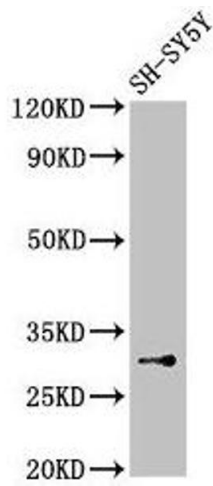
Storage Comment: Upon receipt, store at -20°C or -80°C. Avoid repeated freeze.

Images



Immunohistochemistry

Image 1. Immunohistochemistry of paraffin-embedded human breast cancer using ABIN7157103 at dilution of 1:100



Western Blotting

Image 2. Western Blot Positive WB detected in: SH-SY5Y whole cell lysate All lanes: ISOC1 antibody at 3.5 µg/mL Secondary Goat polyclonal to rabbit IgG at 1/50000 dilution Predicted band size: 33 kDa Observed band size: 33 kDa