



[Go to Product page](#)

Datasheet for ABIN7157142
anti-IZUM01 antibody (AA 22-292)

2 Images

Overview

Quantity:	100 µg
Target:	IZUM01
Binding Specificity:	AA 22-292
Reactivity:	Human
Host:	Rabbit
Clonality:	Polyclonal
Conjugate:	This IZUM01 antibody is un-conjugated
Application:	ELISA, Immunohistochemistry (IHC), Immunofluorescence (IF)

Product Details

Immunogen:	Recombinant Human Izumo sperm-egg fusion protein 1 protein (22-292AA)
Isotype:	IgG
Cross-Reactivity:	Human
Purification:	>95%, Protein G purified

Target Details

Target:	IZUM01
Alternative Name:	IZUM01 (IZUM01 Products)
Background:	Background: Essential sperm cell-surface protein required for fertilization by acting as a ligand for IZUM01R/JUNO receptor on egg. The IZUM01:IZUM01R/JUNO interaction is a necessary

Target Details

adhesion event between sperm and egg that is required for fertilization but is not sufficient for cell fusion. The ligand-receptor interaction probably does not act as a membrane 'fusogen'.

Aliases: FLJ61440 antibody, IZUM1_HUMAN antibody, IZUMO antibody, Izumo sperm egg fusion 1 antibody, Izumo sperm-egg fusion protein 1 antibody, Izumo1 antibody, MGC34799 antibody, OBF antibody, Oocyte binding/fusion factor antibody, Sperm specific protein izumo antibody, Sperm-specific protein izumo antibody

UniProt: [Q8IYV9](#)

Application Details

Application Notes: Recommended dilution: IHC:1:20-1:200, IF:1:50-1:200,

Restrictions: For Research Use only

Handling

Format: Liquid

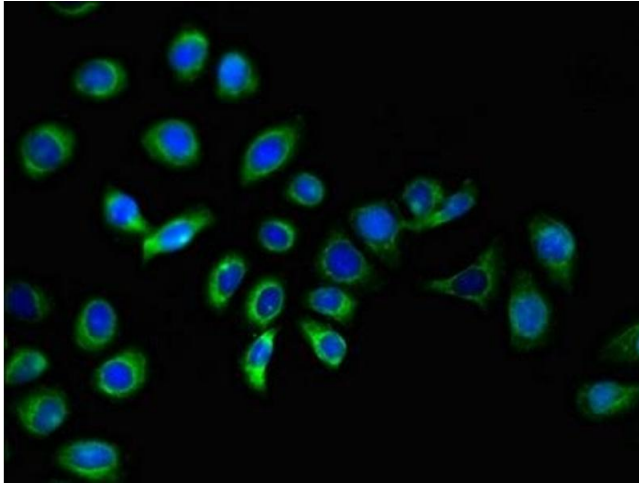
Buffer: Preservative: 0.03 % Proclin 300
Constituents: 50 % Glycerol, 0.01M PBS, PH 7.4

Preservative: ProClin

Precaution of Use: This product contains ProClin: a POISONOUS AND HAZARDOUS SUBSTANCE which should be handled by trained staff only.

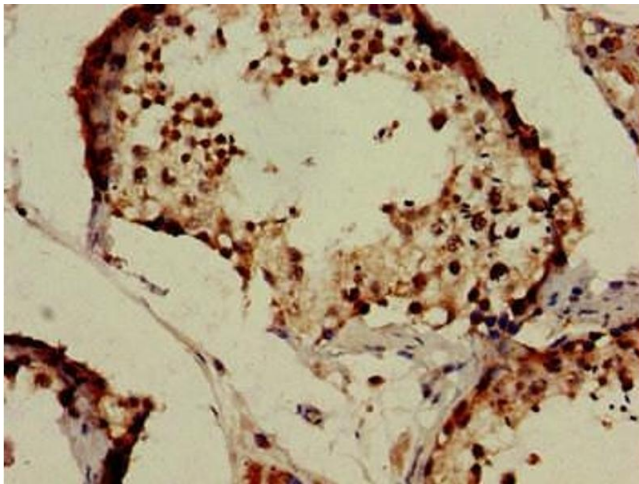
Storage: -20 °C,-80 °C

Storage Comment: Upon receipt, store at -20°C or -80°C. Avoid repeated freeze.



Immunofluorescence

Image 1. Immunofluorescent analysis of A549 cells using ABIN7157142 at dilution of 1:100 and Alexa Fluor 488-conjugated AffiniPure Goat Anti-Rabbit IgG(H+L)



Immunohistochemistry

Image 2. Immunohistochemistry of paraffin-embedded human testis tissue using ABIN7157142 at dilution of 1:100