



[Go to Product page](#)

Datasheet for ABIN7157146
anti-IZUM04 antibody (AA 16-214)

3 Images

Overview

Quantity:	100 µg
Target:	IZUM04
Binding Specificity:	AA 16-214
Reactivity:	Human
Host:	Rabbit
Clonality:	Polyclonal
Conjugate:	This IZUM04 antibody is un-conjugated
Application:	ELISA, Western Blotting (WB), Immunohistochemistry (IHC), Immunofluorescence (IF)

Product Details

Immunogen:	Recombinant Human Izumo sperm-egg fusion protein 4 protein (16-214AA)
Isotype:	IgG
Cross-Reactivity:	Human, Rat
Purification:	>95%, Protein G purified

Target Details

Target:	IZUM04
Alternative Name:	IZUM04 (IZUM04 Products)
Background:	IZUM04 antibody, C19orf36 antibody, UNQ831/PRO1758Izumo sperm-egg fusion protein 4 antibody, Sperm 22 kDa protein c113 antibody

Target Details

UniProt: [Q1ZYL8](#)

Application Details

Application Notes: Recommended dilution: WB:1:500-1:5000, IHC:1:20-1:200, IF:1:50-1:200,

Restrictions: For Research Use only

Handling

Format: Liquid

Buffer: Preservative: 0.03 % Proclin 300
Constituents: 50 % Glycerol, 0.01M PBS, PH 7.4

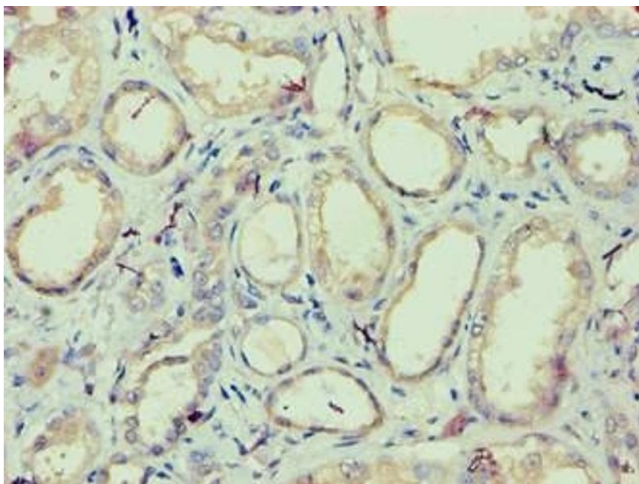
Preservative: ProClin

Precaution of Use: This product contains ProClin: a POISONOUS AND HAZARDOUS SUBSTANCE which should be handled by trained staff only.

Storage: -20 °C,-80 °C

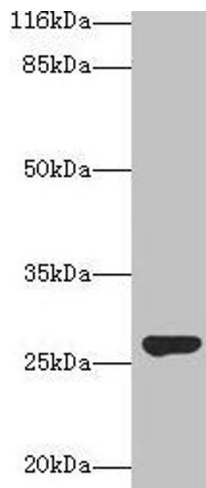
Storage Comment: Upon receipt, store at -20°C or -80°C. Avoid repeated freeze.

Images



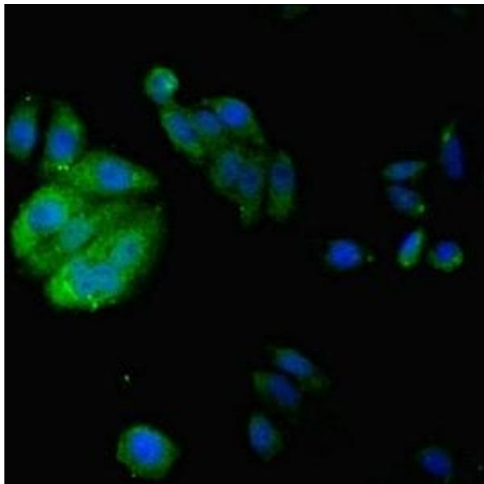
Immunohistochemistry

Image 1. Immunohistochemistry of paraffin-embedded human kidney tissue using ABIN7157146 at dilution of 1:100



Western Blotting

Image 2. Western blot All lanes: IZUMO4 antibody at 2 μ g/mL + Rat gonadal tissue Secondary Goat polyclonal to rabbit IgG at 1/10000 dilution Predicted band size: 27, 25, 18, 19 kDa Observed band size: 27 kDa



Immunofluorescence

Image 3. Immunofluorescent analysis of HepG2 cells using ABIN7157146 at dilution of 1:100 and Alexa Fluor 488-conjugated AffiniPure Goat Anti-Rabbit IgG(H+L)