

Datasheet for ABIN7157178  
**anti-Junctophilin 1 antibody (AA 431-546)**[Go to Product page](#)

## 2 Images

## Overview

Quantity:	100 µg
Target:	Junctophilin 1 (JPH1)
Binding Specificity:	AA 431-546
Reactivity:	Human
Host:	Rabbit
Clonality:	Polyclonal
Conjugate:	This Junctophilin 1 antibody is un-conjugated
Application:	ELISA, Immunohistochemistry (IHC), Immunofluorescence (IF)

## Product Details

Immunogen:	Recombinant Human Junctophilin-1 protein (431-546AA)
Isotype:	IgG
Cross-Reactivity:	Human
Purification:	>95%, Protein G purified

## Target Details

Target:	Junctophilin 1 (JPH1)
Alternative Name:	JPH1 ( <a href="#">JPH1 Products</a> )
Background:	Background: Junctophilins contribute to the formation of junctional membrane complexes (JMCs) which link the plasma membrane with the endoplasmic or sarcoplasmic reticulum in

## Target Details

excitable cells. Provides a structural foundation for functional cross-talk between the cell surface and intracellular calcium release channels. JPH1 contributes to the construction of the skeletal muscle triad by linking the t-tubule (transverse-tubule) and SR (sarcoplasmic reticulum) membranes.

Aliases: DKFZp762L0313 antibody, JP 1 antibody, JP-1 antibody, JP1 antibody, JPH 1 antibody, JPH1 antibody, JPH1\_HUMAN antibody, Junctophilin 1 antibody, Junctophilin type 1 antibody, Junctophilin type1 antibody, Junctophilin-1 antibody, Junctophilin1 antibody, Mitsugumin 72 antibody, Mitsugumin72 antibody

UniProt: [Q9HDC5](#)

## Application Details

Application Notes: Recommended dilution: IHC:1:200-1:500, IF:1:50-1:200,

Restrictions: For Research Use only

## Handling

Format: Liquid

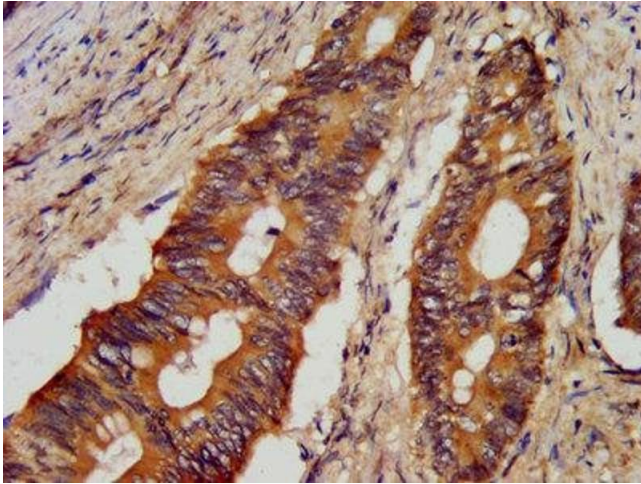
Buffer: Preservative: 0.03 % Proclin 300  
Constituents: 50 % Glycerol, 0.01M PBS, pH 7.4

Preservative: ProClin

Precaution of Use: This product contains ProClin: a POISONOUS AND HAZARDOUS SUBSTANCE which should be handled by trained staff only.

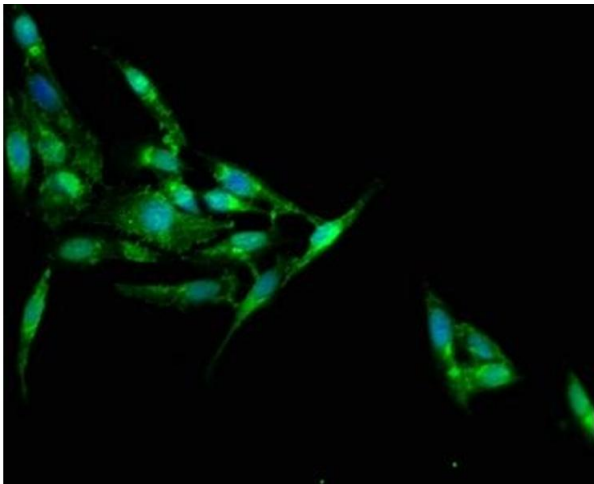
Storage: -20 °C,-80 °C

Storage Comment: Upon receipt, store at -20°C or -80°C. Avoid repeated freeze.



#### Immunohistochemistry

**Image 1.** IHC image of ABIN7157178 diluted at 1:300 and staining in paraffin-embedded human colon cancer performed on a Leica Bond™ system.



#### Immunofluorescence

**Image 2.** Immunofluorescence staining of HeLa cells with ABIN7157178 at 1:100, counter-stained with DAPI. The cells were fixed in 4% formaldehyde, permeabilized using 0.2% Triton X-100 and blocked in 10% normal Goat Serum. The cells were then incubated with the antibody overnight at 4°C. The secondary antibody was Alexa Fluor 488-conjugated AffiniPure Goat Anti-Rabbit IgG(H+L).