



[Go to Product page](#)

Datasheet for ABIN7157182  
**anti-JPT1 antibody (AA 2-154)**

1 Image

### Overview

Quantity:	100 µg
Target:	JPT1
Binding Specificity:	AA 2-154
Reactivity:	Human
Host:	Rabbit
Clonality:	Polyclonal
Conjugate:	This JPT1 antibody is un-conjugated
Application:	ELISA, Western Blotting (WB)

### Product Details

Immunogen:	Recombinant Human Jupiter microtubule associated homolog 1 protein (2-154AA)
Isotype:	IgG
Cross-Reactivity:	Human, Rat
Purification:	>95%, Protein G purified

### Target Details

Target:	JPT1
Alternative Name:	JPT1 ( <a href="#">JPT1 Products</a> )
Background:	Androgen regulated protein 2 antibody, Androgen-regulated protein 2 antibody, ARM2 antibody, Hematological and neurological expressed 1 antibody, Hematological and neurological

## Target Details

expressed 1 protein antibody, HN1 antibody, HN1\_HUMAN antibody, HN1A antibody

UniProt: [Q9UK76](#)

## Application Details

Application Notes: Recommended dilution: WB:1:1000-1:5000,

Restrictions: For Research Use only

## Handling

Format: Liquid

Buffer: Preservative: 0.03 % Proclin 300  
Constituents: 50 % Glycerol, 0.01M PBS, PH 7.4

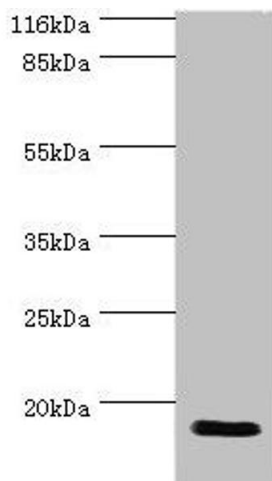
Preservative: ProClin

Precaution of Use: This product contains ProClin: a POISONOUS AND HAZARDOUS SUBSTANCE which should be handled by trained staff only.

Storage: -20 °C,-80 °C

Storage Comment: Upon receipt, store at -20°C or -80°C. Avoid repeated freeze.

## Images



### Western Blotting

**Image 1.** Western blot All lanes: JPT1 antibody at 2 µg/mL + Rat gonad tissue Secondary Goat polyclonal to rabbit IgG at 1/10000 dilution Predicted band size: 17, 20, 12 kDa  
Observed band size: 17 kDa