

Datasheet for ABIN7157186
anti-KALRN antibody (AA 2410-2661)[Go to Product page](#)

2 Images

Overview

Quantity:	100 µL
Target:	KALRN
Binding Specificity:	AA 2410-2661
Reactivity:	Human
Host:	Rabbit
Clonality:	Polyclonal
Conjugate:	This KALRN antibody is un-conjugated
Application:	ELISA, Immunohistochemistry (IHC), Immunofluorescence (IF)

Product Details

Immunogen:	Recombinant Human Kalirin protein (2410-2661AA)
Isotype:	IgG
Cross-Reactivity:	Human
Purification:	Antigen Affinity Purified

Target Details

Target:	KALRN
Alternative Name:	KALRN (KALRN Products)
Background:	Background: Promotes the exchange of GDP by GTP. Activates specific Rho GTPase family members, thereby inducing various signaling mechanisms that regulate neuronal shape,

Target Details

growth, and plasticity, through their effects on the actin cytoskeleton. Induces lamellipodia independent of its GEF activity.

Aliases: Duo antibody, FLJ16443 antibody, HAPIP antibody, Huntingtin associated protein interacting protein (duo) antibody, Huntingtin-associated protein-interacting protein antibody, Kalirin (isoform 2) antibody, Kalirin antibody, KALRN antibody, KALRN_HUMAN antibody, Protein Duo antibody, RhoGEF kinase antibody, Serine/threonine kinase with Dbl and pleckstrin homology domains antibody, Serine/threonine-protein kinase with Dbl- and pleckstrin homology domain antibody, TRAD antibody

UniProt: [O60229](#)

Pathways: [Neurotrophin Signaling Pathway](#)

Application Details

Application Notes: Recommended dilution: IHC:1:20-1:200, IF:1:50-1:200,

Restrictions: For Research Use only

Handling

Format: Liquid

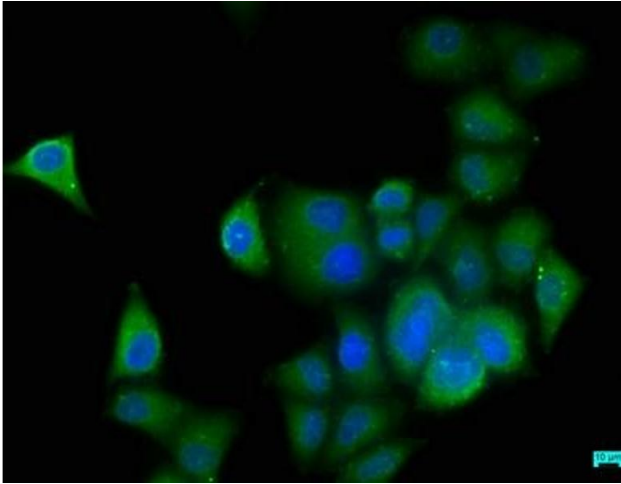
Buffer: Preservative: 0.03 % Proclin 300
Constituents: 50 % Glycerol, 0.01M PBS, pH 7.4

Preservative: ProClin

Precaution of Use: This product contains ProClin: a POISONOUS AND HAZARDOUS SUBSTANCE which should be handled by trained staff only.

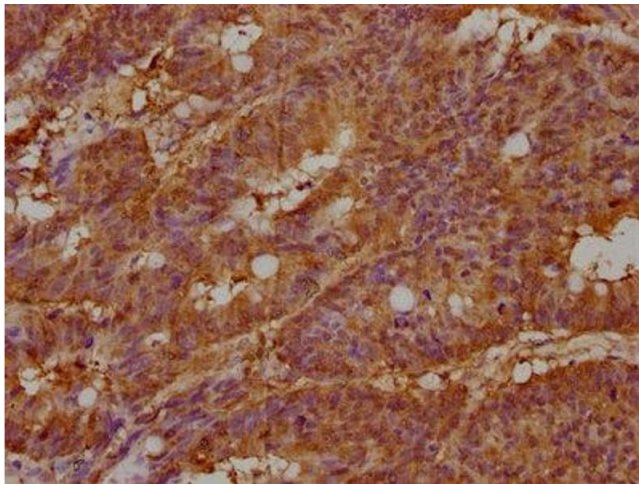
Storage: -20 °C, -80 °C

Storage Comment: Upon receipt, store at -20°C or -80°C. Avoid repeated freeze.



Immunofluorescence

Image 1. Immunofluorescence staining of HeLa cells with ABIN7157186 at 1:50, counter-stained with DAPI. The cells were fixed in 4 % formaldehyde, permeabilized using 0.2 % Triton X-100 and blocked in 10 % normal Goat Serum. The cells were then incubated with the antibody overnight at 4 °C. The secondary antibody was Alexa Fluor 488-conjugated AffiniPure Goat Anti-Rabbit IgG(H+L).



Immunohistochemistry

Image 2. IHC image of ABIN7157186 diluted at 1:100 and staining in paraffin-embedded human colon cancer performed on a Leica Bond™ system. After dewaxing and hydration, antigen retrieval was mediated by high pressure in a citrate buffer (pH 6.0). Section was blocked with 10 % normal goat serum 30 min at RT. Then primary antibody (1 % BSA) was incubated at 4 °C overnight. The primary is detected by a biotinylated secondary antibody and visualized using an HRP conjugated SP system.