

Datasheet for ABIN7157190  
**anti-Kallikrein 1 antibody (AA 25-262)**

## 3 Images

[Go to Product page](#)

## Overview

Quantity:	100 µg
Target:	Kallikrein 1 (KLK1)
Binding Specificity:	AA 25-262
Reactivity:	Human
Host:	Rabbit
Clonality:	Polyclonal
Conjugate:	This Kallikrein 1 antibody is un-conjugated
Application:	ELISA, Immunohistochemistry (IHC), Immunofluorescence (IF)

## Product Details

Immunogen:	Recombinant Human Kallikrein-1 protein (25-262AA)
Isotype:	IgG
Cross-Reactivity:	Human
Purification:	>95%, Protein G purified

## Target Details

Target:	Kallikrein 1 (KLK1)
Alternative Name:	KLK1 ( <a href="#">KLK1 Products</a> )
Background:	Background: Glandular kallikreins cleave Met-Lys and Arg-Ser bonds in kininogen to release Lys-bradykinin.

## Target Details

Aliases: Glandular kallikrein 1 antibody, hK 1 antibody, hK1 antibody, Kallikrein serine protease 1 antibody, Kallikrein-1 antibody, Kidney/pancreas/salivary gland kallikrein antibody, Klk 6 antibody, KLK1 antibody, KLK1\_HUMAN antibody, Klk6 antibody, KLKR antibody, Tissue kallikrein antibody

UniProt: [P06870](#)

Pathways: [Complement System](#)

## Application Details

Application Notes: Recommended dilution: IHC:1:200-1:500, IF:1:50-1:200,

Restrictions: For Research Use only

## Handling

Format: Liquid

Buffer: Preservative: 0.03 % Proclin 300  
Constituents: 50 % Glycerol, 0.01M PBS, PH 7.4

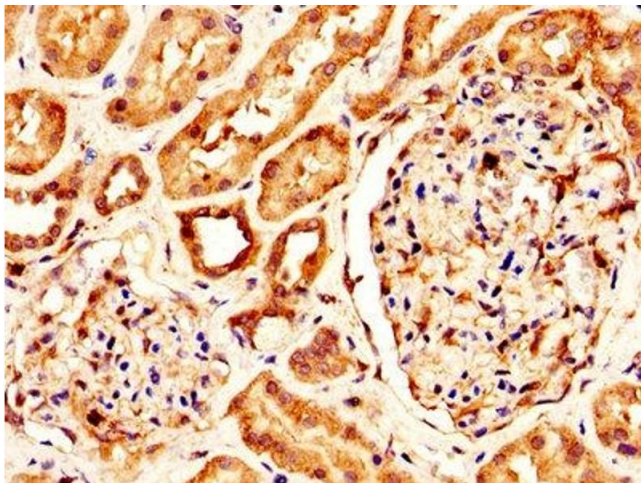
Preservative: ProClin

Precaution of Use: This product contains ProClin: a POISONOUS AND HAZARDOUS SUBSTANCE which should be handled by trained staff only.

Storage: -20 °C,-80 °C

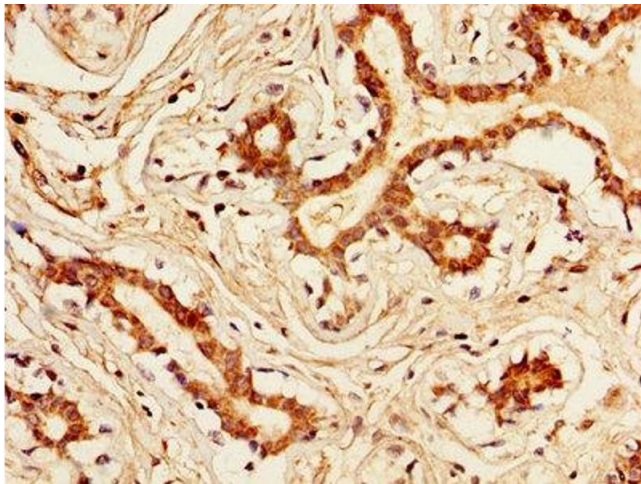
Storage Comment: Upon receipt, store at -20°C or -80°C. Avoid repeated freeze.

## Images



### Immunohistochemistry

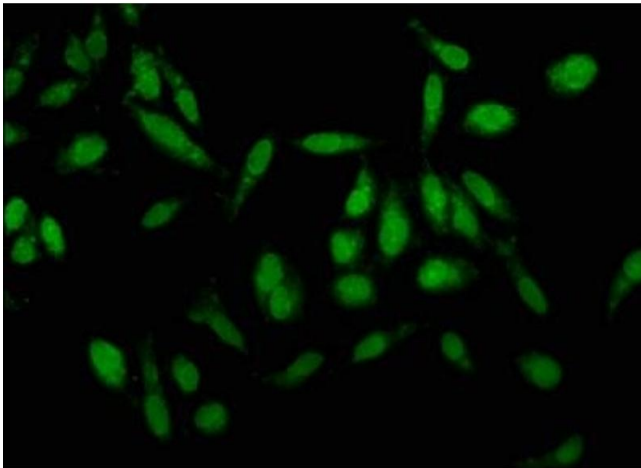
**Image 1.** IHC image of ABIN7157190 diluted at 1:300 and staining in paraffin-embedded human kidney tissue performed on a Leica Bond™ system. After dewaxing and hydration, antigen retrieval was mediated by high pressure in a citrate buffer (pH 6.0). Section was blocked with 10% normal goat serum 30min at RT. Then primary antibody (1% BSA) was incubated at 4°C overnight. The primary is detected by a biotinylated secondary antibody and



visualized using an HRP conjugated SP system.

### Immunohistochemistry

**Image 2.** IHC image of ABIN7157190 diluted at 1:300 and staining in paraffin-embedded human breast cancer performed on a Leica Bond™ system. After dewaxing and hydration, antigen retrieval was mediated by high pressure in a citrate buffer (pH 6.0). Section was blocked with 10% normal goat serum 30min at RT. Then primary antibody (1% BSA) was incubated at 4°C overnight. The primary is detected by a biotinylated secondary antibody and visualized using an HRP conjugated SP system.



### Immunofluorescence

**Image 3.** Immunofluorescence staining of HeLa cells with ABIN7157190 at 1:100, counter-stained with DAPI. The cells were fixed in 4% formaldehyde, permeabilized using 0.2% Triton X-100 and blocked in 10% normal Goat Serum. The cells were then incubated with the antibody overnight at 4°C. The secondary antibody was Alexa Fluor 488-conjugated AffiniPure Goat Anti-Rabbit IgG(H+L).