

Datasheet for ABIN7157221
anti-Kallikrein 8 antibody (AA 87-241)[Go to Product page](#)

2 Images

Overview

Quantity:	100 µg
Target:	Kallikrein 8 (KLK8)
Binding Specificity:	AA 87-241
Reactivity:	Human
Host:	Rabbit
Clonality:	Polyclonal
Conjugate:	This Kallikrein 8 antibody is un-conjugated
Application:	Immunohistochemistry (IHC), ELISA, Immunofluorescence (IF)

Product Details

Immunogen:	Recombinant Human Kallikrein-8 protein (87-241AA)
Isotype:	IgG
Cross-Reactivity:	Human
Purification:	>95%, Protein G purified

Target Details

Target:	Kallikrein 8 (KLK8)
Alternative Name:	KLK8 (KLK8 Products)
Background:	Background: Serine protease which is capable of degrading a number of proteins such as casein, fibrinogen, kininogen, fibronectin and collagen type IV. Also cleaves L1CAM in response

Target Details

to increased neural activity. Induces neurite outgrowth and fasciculation of cultured hippocampal neurons. Plays a role in the formation and maturation of orphan and small synaptic boutons in the Schaffer-collateral pathway, regulates Schaffer-collateral long-term potentiation in the hippocampus and is required for memory acquisition and synaptic plasticity. Involved in skin desquamation and keratinocyte proliferation. Plays a role in the secondary phase of pathogenesis following spinal cord injury.

Aliases: Brain serine protease 1 antibody, BSP1 antibody, hK8 antibody, HNP antibody, HPN antibody, Kallikrein 8 (neuropsin/ovasin) antibody, Kallikrein related peptidase 8 antibody, Kallikrein-8 antibody, Kallikrein8 antibody, KLK 8 antibody, Klk8 antibody, KLK8 protein type 1 antibody, KLK8 protein type 2 antibody, KLK8_HUMAN antibody, Neuropsin antibody, neuropsin type 1 antibody, Neuropsin type 1, included antibody, Neuropsin type 2 antibody, Neuropsin type 2, included antibody, Neuropsin, mouse, homolog of antibody, NP antibody, NRPN antibody, Ovasin antibody, PRO322 antibody, Protease serine 19 antibody, PRSS 19 antibody, PRSS19 antibody, Serine protease 19 antibody, Serine protease kallikrein antibody, Serine protease kallikrein/ovasin/neuropsin antibody, Serine protease TADG 14 antibody, Serine protease TADG-14 antibody, Serine protease TADG14 antibody, TADG 14 antibody, TADG14 antibody, Tumor associated differentially expressed gene 14 antibody, Tumor associated differentially expressed gene 14 protein antibody, Tumor-associated differentially expressed gene 14 protein antibody, UNQ283 antibody

UniProt: [O60259](#)

Pathways: [Complement System](#)

Application Details

Application Notes: Recommended dilution: IHC:1:20-1:200, IF:1:50-1:200,

Restrictions: For Research Use only

Handling

Format: Liquid

Buffer: Preservative: 0.03 % Proclin 300
Constituents: 50 % Glycerol, 0.01M PBS, pH 7.4

Preservative: ProClin

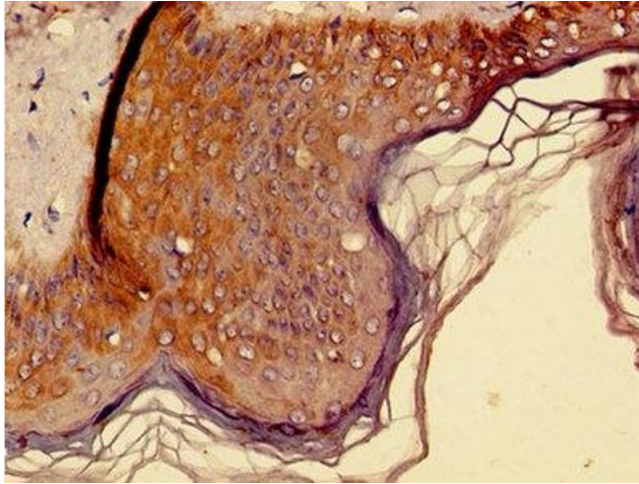
Precaution of Use: This product contains ProClin: a POISONOUS AND HAZARDOUS SUBSTANCE which should be handled by trained staff only.

Handling

Storage: -20 °C, -80 °C

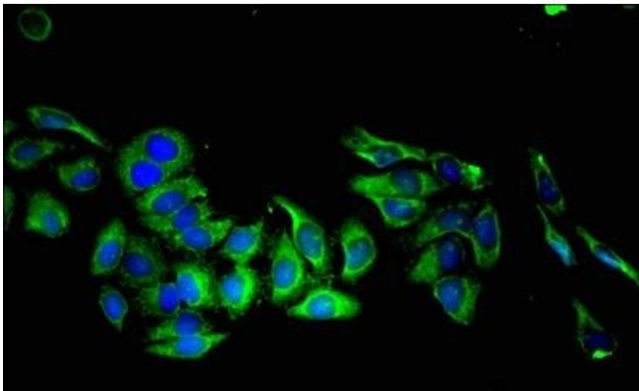
Storage Comment: Upon receipt, store at -20°C or -80°C. Avoid repeated freeze.

Images



Immunohistochemistry

Image 1. Immunohistochemistry of paraffin-embedded human skin tissue using ABIN7157221 at dilution of 1:100



Immunofluorescence

Image 2. Immunofluorescent analysis of HepG2 cells using ABIN7157221 at dilution of 1:100 and Alexa Fluor 488-conjugated AffiniPure Goat Anti-Rabbit IgG(H+L)