



[Go to Product page](#)

Datasheet for ABIN7157225
anti-SERPINA4 antibody (AA 178-427)

1 Image

Overview

Quantity:	100 µL
Target:	SERPINA4
Binding Specificity:	AA 178-427
Reactivity:	Human
Host:	Rabbit
Clonality:	Polyclonal
Conjugate:	This SERPINA4 antibody is un-conjugated
Application:	ELISA, Immunohistochemistry (IHC)

Product Details

Immunogen:	Recombinant Human Kallistatin protein (178-427AA)
Isotype:	IgG
Cross-Reactivity:	Human
Purification:	Antigen Affinity Purified

Target Details

Target:	SERPINA4
Alternative Name:	SERPINA4 (SERPINA4 Products)
Background:	Background: Inhibits human amidolytic and kininogenase activities of tissue kallikrein. Inhibition is achieved by formation of an equimolar, heat- and SDS-stable complex between the inhibitor

Target Details

and the enzyme, and generation of a small C-terminal fragment of the inhibitor due to cleavage at the reactive site by tissue kallikrein.

Aliases: KAIN_HUMAN antibody, KAL antibody, Kallikrein binding protein antibody, Kallikrein inhibitor antibody, Kallistatin antibody, KBP antibody, KLST antibody, KST antibody, MGC108582 antibody, Peptidase inhibitor 4 antibody, PI-4 antibody, PI4 antibody, Protease inhibitor 4 (kallistatin) antibody, Protease inhibitor 4 antibody, Serine (or cysteine) proteinase inhibitor, clade A (alpha 1 antiproteinase, antitrypsin), member 4 antibody, Serpin A4 antibody, Serpin peptidase inhibitor clade A member 4 antibody, Serpin peptidase inhibitor, clade A (alpha 1 antiproteinase, antitrypsin), member 4 antibody, SERPINA4 antibody, Tissue kallistatin inhibitor antibody

UniProt: [P29622](#)

Application Details

Application Notes: Recommended dilution: IHC:1:20-1:200,

Restrictions: For Research Use only

Handling

Format: Liquid

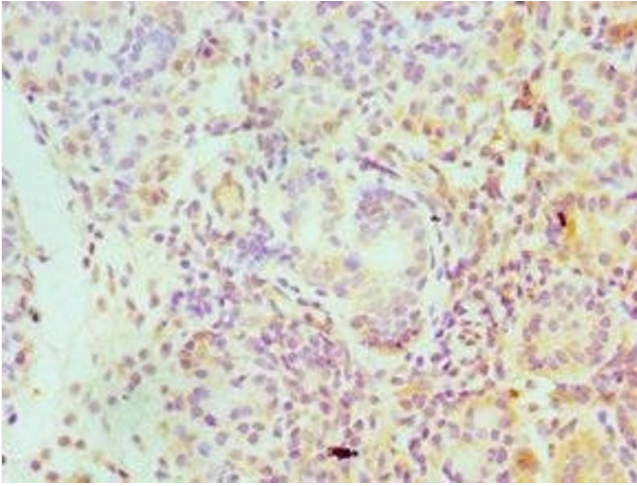
Buffer: PBS with 0.02 % sodium azide, 50 % glycerol, pH 7.3.

Preservative: Sodium azide

Precaution of Use: This product contains Sodium azide: a POISONOUS AND HAZARDOUS SUBSTANCE which should be handled by trained staff only.

Storage: -20 °C,-80 °C

Storage Comment: Upon receipt, store at -20°C or -80°C. Avoid repeated freeze.



Immunohistochemistry

Image 1. Immunohistochemistry of paraffin-embedded human pancreatic tissue using ABIN7157225 at dilution of 1:100