



[Go to Product page](#)

Datasheet for ABIN7157248
anti-KBTBD3 antibody (AA 1-350)

1 Image

Overview

Quantity:	100 µL
Target:	KBTBD3
Binding Specificity:	AA 1-350
Reactivity:	Human
Host:	Rabbit
Clonality:	Polyclonal
Conjugate:	This KBTBD3 antibody is un-conjugated
Application:	Immunohistochemistry (IHC), ELISA

Product Details

Immunogen:	Recombinant Human Kelch repeat and BTB domain-containing protein 3 protein (1-350AA)
Isotype:	IgG
Cross-Reactivity:	Human
Purification:	Antigen Affinity Purified

Target Details

Target:	KBTBD3
Alternative Name:	KBTBD3 (KBTBD3 Products)
Background:	Background: Cul3-RING ubiquitin ligase complex Aliases: KBTBD3 antibody, BKLHD3 antibody, Kelch repeat and BTB domain-containing protein

Target Details

3 antibody, BTB and kelch domain-containing protein 3 antibody

UniProt: [Q8NAB2](#)

Application Details

Application Notes: Recommended dilution: IHC:1:20-1:200,

Restrictions: For Research Use only

Handling

Format: Liquid

Buffer: PBS with 0.02 % sodium azide, 50 % glycerol, pH 7.3.

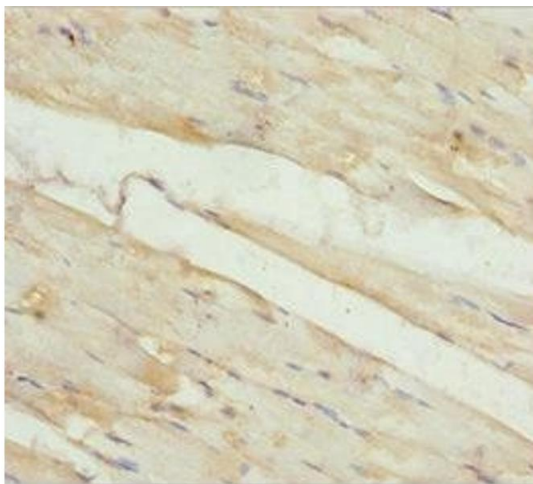
Preservative: Sodium azide

Precaution of Use: This product contains Sodium azide: a POISONOUS AND HAZARDOUS SUBSTANCE which should be handled by trained staff only.

Storage: -20 °C,-80 °C

Storage Comment: Upon receipt, store at -20°C or -80°C. Avoid repeated freeze.

Images



Immunohistochemistry

Image 1. Immunohistochemistry of paraffin-embedded human skeletal muscle tissue using ABIN7157248 at dilution of 1:100