



Datasheet for ABIN7157259  
**anti-KBTBD7 antibody (AA 475-684)**



[Go to Product page](#)

3 Images

Overview

Quantity:	100 µL
Target:	KBTBD7
Binding Specificity:	AA 475-684
Reactivity:	Human
Host:	Rabbit
Clonality:	Polyclonal
Conjugate:	This KBTBD7 antibody is un-conjugated
Application:	ELISA, Immunohistochemistry (IHC), Immunofluorescence (IF)

Product Details

Immunogen:	Recombinant Human Kelch repeat and BTB domain-containing protein 7 protein (475-684aa)
Isotype:	IgG
Cross-Reactivity:	Human
Purification:	>95%, Protein G purified

Target Details

Target:	KBTBD7
Alternative Name:	KBTBD7 ( <a href="#">KBTBD7 Products</a> )
Background:	Background: Cul3-RING ubiquitin ligase complex, cytosol, MAPK cascade, post-translational protein modification

## Target Details

Aliases: Kelch repeat and BTB domain-containing protein 7, KBTBD7

UniProt: [Q8WVZ9](#)

## Application Details

Application Notes: Recommended dilution: IHC:1:100-1:500, IF:1:100-1:500,

Restrictions: For Research Use only

## Handling

Format: Liquid

Buffer: Preservative: 0.03 % Proclin 300  
Constituents: 50 % Glycerol, 0.01M PBS, pH 7.4

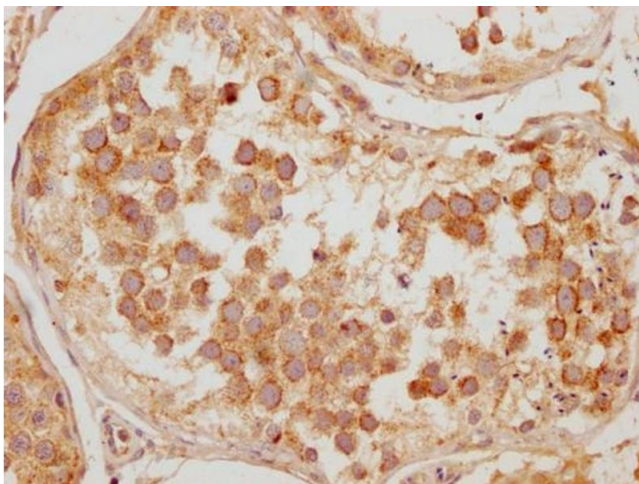
Preservative: ProClin

Precaution of Use: This product contains ProClin: a POISONOUS AND HAZARDOUS SUBSTANCE which should be handled by trained staff only.

Storage: -20 °C,-80 °C

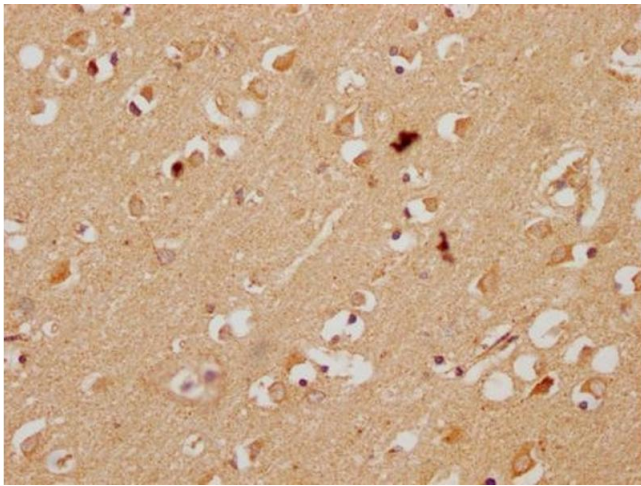
Storage Comment: Upon receipt, store at -20°C or -80°C. Avoid repeated freeze.

## Images



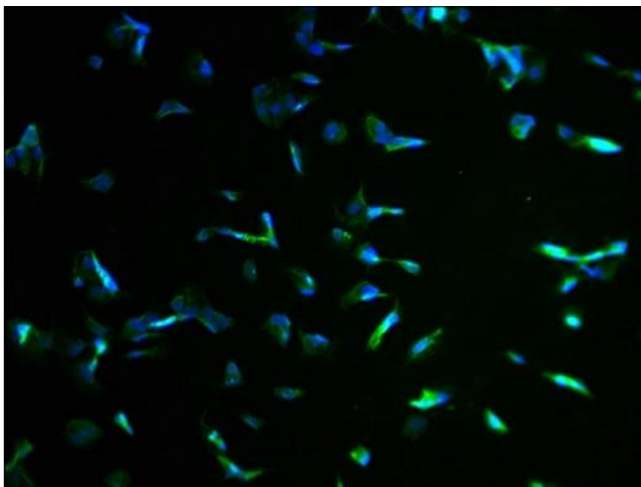
### Immunohistochemistry

**Image 1.** IHC image of ABIN7157259 diluted at 1:200 and staining in paraffin-embedded human testis tissue performed on a Leica Bond™ system. After dewaxing and hydration, antigen retrieval was mediated by high pressure in a citrate buffer (pH 6.0). Section was blocked with 10 % normal goat serum 30 min at RT. Then primary antibody (1 % BSA) was incubated at 4 °C overnight. The primary is detected by a Goat anti-rabbit polymer IgG labeled by HRP and visualized using 0.05 % DAB.



### Immunohistochemistry

**Image 2.** IHC image of ABIN7157259 diluted at 1:200 and staining in paraffin-embedded human brain tissue performed on a Leica Bond™ system. After dewaxing and hydration, antigen retrieval was mediated by high pressure in a citrate buffer (pH 6.0). Section was blocked with 10 % normal goat serum 30 min at RT. Then primary antibody (1 % BSA) was incubated at 4 °C overnight. The primary is detected by a Goat anti-rabbit polymer IgG labeled by HRP and visualized using 0.05 % DAB.



### Immunofluorescence

**Image 3.** Immunofluorescence staining of MCF-7 cells with ABIN7157259 at 1:100, counter-stained with DAPI. The cells were fixed in 4 % formaldehyde and blocked in 10 % normal Goat Serum. The cells were then incubated with the antibody overnight at 4 °C. The secondary antibody was Alexa Fluor 488-conjugated AffiniPure Goat Anti-Rabbit IgG(H+L).