

Datasheet for ABIN7157263  
**anti-KEAP1 antibody (AA 1-624)**[Go to Product page](#)

## 2 Images

## Overview

Quantity:	100 µg
Target:	KEAP1
Binding Specificity:	AA 1-624
Reactivity:	Human
Host:	Rabbit
Clonality:	Polyclonal
Conjugate:	This KEAP1 antibody is un-conjugated
Application:	Western Blotting (WB), ELISA, Immunohistochemistry (IHC)

## Product Details

Immunogen:	Recombinant Human Kelch-like ECH-associated protein 1 protein (1-624AA)
Isotype:	IgG
Cross-Reactivity:	Human, Mouse
Purification:	>95%, Protein G purified

## Target Details

Target:	KEAP1
Alternative Name:	KEAP1 ( <a href="#">KEAP1 Products</a> )
Background:	Background: Acts as a substrate adapter protein for the E3 ubiquitin ligase complex formed by CUL3 and RBX1 and targets NFE2L2/NRF2 for ubiquitination and degradation by the

## Target Details

proteasome, thus resulting in the suppression of its transcriptional activity and the repression of antioxidant response element-mediated detoxifying enzyme gene expression. Retains NFE2L2/NRF2 and may also retain BPTF in the cytosol. Targets PGAM5 for ubiquitination and degradation by the proteasome.

Aliases: Cytosolic inhibitor of Nrf2 antibody, INrf 2 antibody, INrf2 antibody, Keap 1 antibody, KEAP1 antibody, KEAP1\_HUMAN antibody, Kelch like ECH associated protein 1 antibody, Kelch like family member 19 antibody, Kelch like protein 19 antibody, Kelch-like ECH-associated protein 1 antibody, Kelch-like protein 19 antibody, KIAA0132 antibody, KLHL 19 antibody, KLHL19 antibody, MGC10630 antibody, MGC1114 antibody, MGC20887 antibody, MGC4407 antibody, MGC9454 antibody

UniProt: [Q14145](#)

Pathways: [Maintenance of Protein Location](#)

## Application Details

Application Notes: Recommended dilution: WB:1:500-1:5000, IHC:1:20-1:200,

Restrictions: For Research Use only

## Handling

Format: Liquid

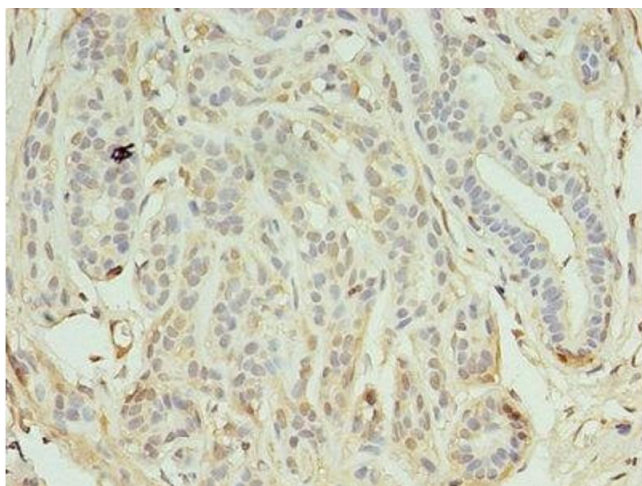
Buffer: Preservative: 0.03 % Proclin 300  
Constituents: 50 % Glycerol, 0.01M PBS, PH 7.4

Preservative: ProClin

Precaution of Use: This product contains ProClin: a POISONOUS AND HAZARDOUS SUBSTANCE which should be handled by trained staff only.

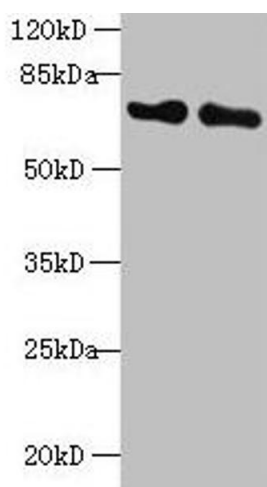
Storage: -20 °C,-80 °C

Storage Comment: Upon receipt, store at -20°C or -80°C. Avoid repeated freeze.



#### Immunohistochemistry

**Image 1.** Immunohistochemistry of paraffin-embedded human breast cancer using ABIN7157263 at dilution of 1:100



#### Western Blotting

**Image 2.** Western blot All lanes: KEAP1 antibody at 2 µg/mL  
Lane 1: Mouse kidney tissue Lane 2: NIH/3T3 whole cell lysate Secondary Goat polyclonal to rabbit IgG at 1/10000 dilution Predicted band size: 70 kDa Observed band size: 70 kDa