

Datasheet for ABIN7157273  
**anti-KLHL2 antibody (AA 1-155)**

## 3 Images

[Go to Product page](#)

## Overview

Quantity:	100 µg
Target:	KLHL2
Binding Specificity:	AA 1-155
Reactivity:	Human
Host:	Rabbit
Clonality:	Polyclonal
Conjugate:	This KLHL2 antibody is un-conjugated
Application:	Western Blotting (WB), ELISA, Immunofluorescence (IF), Immunohistochemistry (IHC)

## Product Details

Immunogen:	Recombinant Human Kelch-like protein 2 protein (1-155AA)
Isotype:	IgG
Cross-Reactivity:	Human, Mouse
Purification:	>95%, Protein G purified

## Target Details

Target:	KLHL2
Alternative Name:	KLHL2 ( <a href="#">KLHL2 Products</a> )
Background:	Background: Component of a cullin-RING-based BCR (BTB-CUL3-RBX1) E3 ubiquitin-protein ligase complex that mediates the ubiquitination of target proteins, such as NPTXR, leading

## Target Details

most often to their proteasomal degradation. Responsible for degradative ubiquitination of the WNK kinases WNK1, WNK3 and WNK4. Plays a role in the reorganization of the actin cytoskeleton. Promotes growth of cell projections in oligodendrocyte precursors.

Aliases: ABP KELCH antibody, Actin binding protein Mayven antibody, Actin-binding protein Mayven antibody, kelch antibody, kelch like 2 antibody, Kelch like 2, Mayven antibody, Kelch like family member 2 antibody, Kelch like protein 2 antibody, Kelch-like protein 2 antibody, KLHL2 antibody, KLHL2\_HUMAN antibody, MAV antibody, MAYVEN antibody, OTTHUMP00000219997 antibody, OTTHUMP00000219998 antibody

UniProt: [O95198](#)

## Application Details

Application Notes: Recommended dilution: WB:1:500-1:5000, IHC:1:20-1:200, IF:1:50-1:200,

Restrictions: For Research Use only

## Handling

Format: Liquid

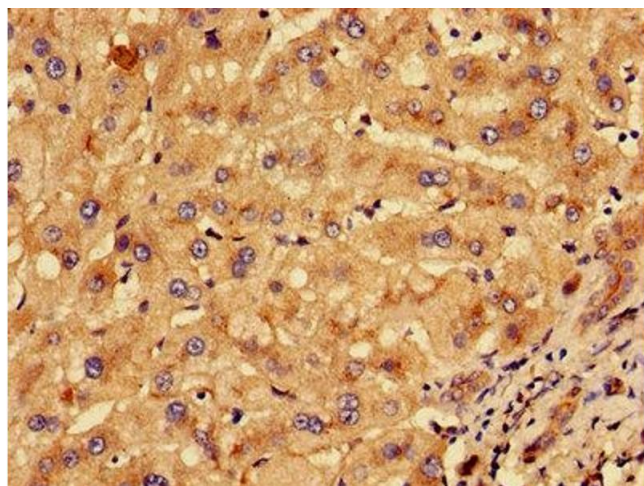
Buffer: Preservative: 0.03 % Proclin 300  
Constituents: 50 % Glycerol, 0.01M PBS, PH 7.4

Preservative: ProClin

Precaution of Use: This product contains ProClin: a POISONOUS AND HAZARDOUS SUBSTANCE which should be handled by trained staff only.

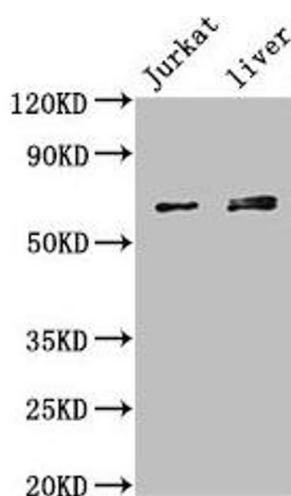
Storage: -20 °C,-80 °C

Storage Comment: Upon receipt, store at -20°C or -80°C. Avoid repeated freeze.



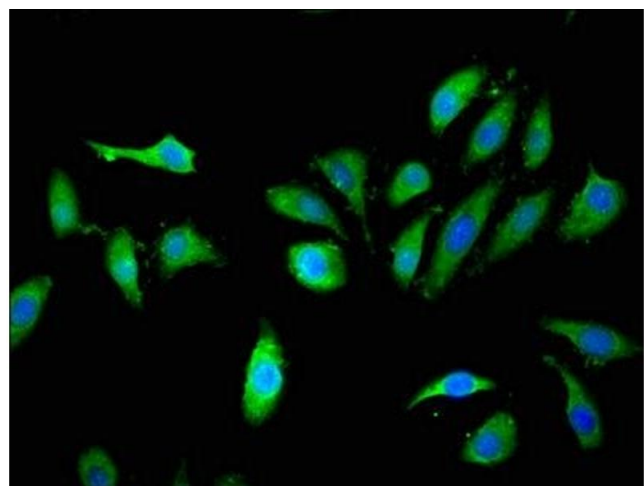
### Immunohistochemistry

**Image 1.** Immunohistochemistry of paraffin-embedded human liver tissue using ABIN7157273 at dilution of 1:100



### Western Blotting

**Image 2.** Western Blot Positive WB detected in: Jurkat whole cell lysate, Mouse liver tissue All lanes: KLHL2 antibody at 3 µg/mL Secondary Goat polyclonal to rabbit IgG at 1/50000 dilution Predicted band size: 66, 67, 57 kDa Observed band size: 66, 67 kDa



### Immunofluorescence

**Image 3.** Immunofluorescent analysis of HeLa cells using ABIN7157273 at dilution of 1:100 and Alexa Fluor 488-conjugated AffiniPure Goat Anti-Rabbit IgG(H+L)