

Datasheet for ABIN7157277  
**anti-KLHL2 antibody (AA 1-200)**

## 3 Images

[Go to Product page](#)

## Overview

Quantity:	100 µg
Target:	KLHL2
Binding Specificity:	AA 1-200
Reactivity:	Human
Host:	Rabbit
Clonality:	Polyclonal
Conjugate:	This KLHL2 antibody is un-conjugated
Application:	ELISA, Immunofluorescence (IF), Immunohistochemistry (IHC)

## Product Details

Immunogen:	Recombinant Human Kelch-like protein 20 protein (1-200AA)
Isotype:	IgG
Cross-Reactivity:	Human
Purification:	>95%, Protein G purified

## Target Details

Target:	KLHL2
Alternative Name:	KLHL2 ( <a href="#">KLHL2 Products</a> )
Background:	Background: Substrate-specific adapter of a BCR (BTB-CUL3-RBX1) E3 ubiquitin-protein ligase complex involved in interferon response and anterograde Golgi to endosome transport. The

## Target Details

BCR(KLHL20) E3 ubiquitin ligase complex mediates the ubiquitination of DAPK1, leading to its degradation by the proteasome, thereby acting as a negative regulator of apoptosis (PubMed:20389280). The BCR(KLHL20) E3 ubiquitin ligase complex also specifically mediates Lys-33-linked ubiquitination (PubMed:24768539). Involved in anterograde Golgi to endosome transport by mediating Lys-33-linked ubiquitination of CORO7, promoting interaction between CORO7 and EPS15, thereby facilitating actin polymerization and post-Golgi trafficking (PubMed:24768539). Also acts as a regulator of endothelial migration during angiogenesis by controlling the activation of Rho GTPases. The BCR(KLHL20) E3 ubiquitin ligase complex acts as a regulator of neurite outgrowth by mediating ubiquitination and degradation of PDZ-RhoGEF/ARHGEF11 (PubMed:21670212). In case of tumor, the BCR(KLHL20) E3 ubiquitin ligase complex is involved in tumor hypoxia: following hypoxia, the BCR(KLHL20) complex mediates ubiquitination and degradation of PML, potentiating HIF-1 signaling and cancer progression (PubMed:21840486).

Aliases: Kelch like ECT2 interacting protein antibody, Kelch like protein 20 antibody, Kelch like protein X antibody, Kelch motif containing protein antibody, Kelch-like ECT2-interacting protein antibody, Kelch-like protein 20 antibody, Kelch-like protein X antibody, KHLHX antibody, KLEIP antibody, KLH20\_HUMAN antibody, KLHL20 antibody, KLHLX antibody, RP3-383J4.3 antibody

UniProt: [Q9Y2M5](#)

## Application Details

Application Notes: Recommended dilution: IHC:1:200-1:500, IF:1:50-1:200,

Restrictions: For Research Use only

## Handling

Format: Liquid

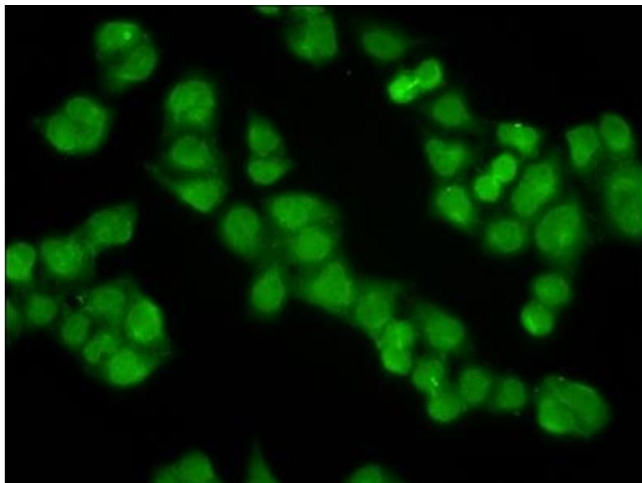
Buffer: Preservative: 0.03 % Proclin 300  
Constituents: 50 % Glycerol, 0.01M PBS, pH 7.4

Preservative: ProClin

Precaution of Use: This product contains ProClin: a POISONOUS AND HAZARDOUS SUBSTANCE which should be handled by trained staff only.

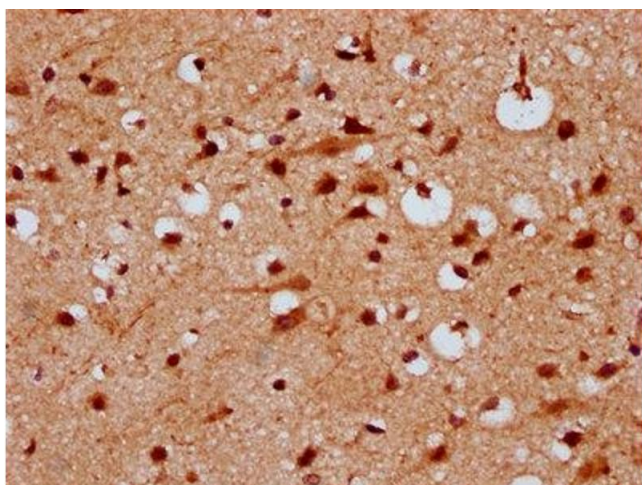
Storage: -20 °C, -80 °C

Storage Comment: Upon receipt, store at -20°C or -80°C. Avoid repeated freeze.



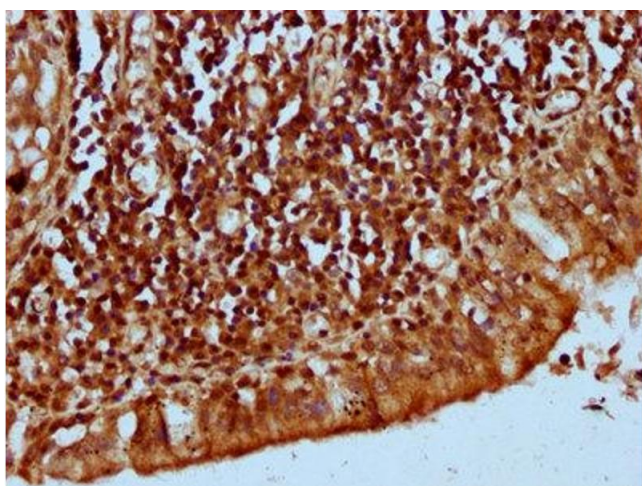
#### Immunofluorescence

**Image 1.** Immunofluorescence staining of HeLa cells with ABIN7157277 at 1:100, counter-stained with DAPI. The cells were fixed in 4% formaldehyde, permeabilized using 0.2% Triton X-100 and blocked in 10% normal Goat Serum. The cells were then incubated with the antibody overnight at 4°C. The secondary antibody was Alexa Fluor 488-conjugated AffiniPure Goat Anti-Rabbit IgG(H+L).



#### Immunohistochemistry

**Image 2.** IHC image of ABIN7157277 diluted at 1:300 and staining in paraffin-embedded human brain tissue performed on a Leica Bond™ system. After dewaxing and hydration, antigen retrieval was mediated by high pressure in a citrate buffer (pH 6.0). Section was blocked with 10% normal goat serum 30min at RT. Then primary antibody (1% BSA) was incubated at 4°C overnight. The primary is detected by a biotinylated secondary antibody and visualized using an HRP conjugated SP system.



#### Immunohistochemistry

**Image 3.** IHC image of ABIN7157277 diluted at 1:300 and staining in paraffin-embedded human lung tissue performed on a Leica Bond™ system. After dewaxing and hydration, antigen retrieval was mediated by high pressure in a citrate buffer (pH 6.0). Section was blocked with 10% normal goat serum 30min at RT. Then primary antibody (1% BSA) was incubated at 4°C overnight. The primary is detected by a biotinylated secondary antibody and visualized using an HRP conjugated SP system.