



Datasheet for ABIN7157289  
**anti-KLHL26 antibody (AA 366-615)**



[Go to Product page](#)

2 Images

Overview

Quantity:	100 µL
Target:	KLHL26
Binding Specificity:	AA 366-615
Reactivity:	Human
Host:	Rabbit
Clonality:	Polyclonal
Conjugate:	This KLHL26 antibody is un-conjugated
Application:	ELISA, Immunohistochemistry (IHC)

Product Details

Immunogen:	Recombinant Human Kelch-like protein 26 protein (366-615AA)
Isotype:	IgG
Cross-Reactivity:	Human
Purification:	Antigen Affinity Purified

Target Details

Target:	KLHL26
Alternative Name:	KLHL26 ( <a href="#">KLHL26 Products</a> )
Background:	Background: Cul3-RING ubiquitin ligase complex Aliases: C630013N10Rik antibody, FLJ11078 antibody, Kelch like 26 (Drosophila) antibody,

## Target Details

Kelch like protein 26 antibody, Kelch-like protein 26 antibody, KLH26\_HUMAN antibody, KLHL26 antibody, Kikl26 antibody

UniProt: [Q53HC5](#)

## Application Details

Application Notes: Recommended dilution: IHC:1:20-1:200,

Restrictions: For Research Use only

## Handling

Format: Liquid

Buffer: PBS with 0.02 % sodium azide, 50 % glycerol, pH 7.3.

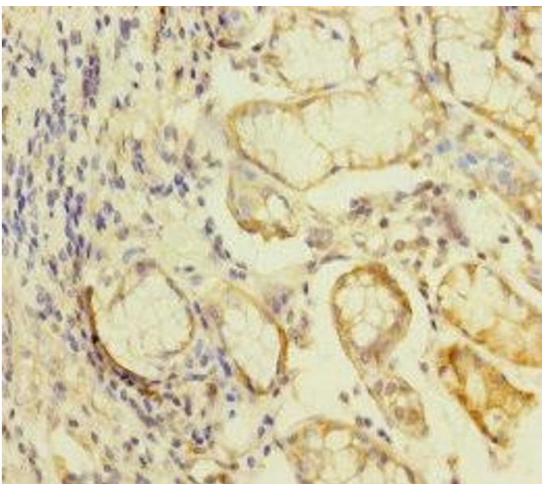
Preservative: Sodium azide

Precaution of Use: This product contains Sodium azide: a POISONOUS AND HAZARDOUS SUBSTANCE which should be handled by trained staff only.

Storage: -20 °C,-80 °C

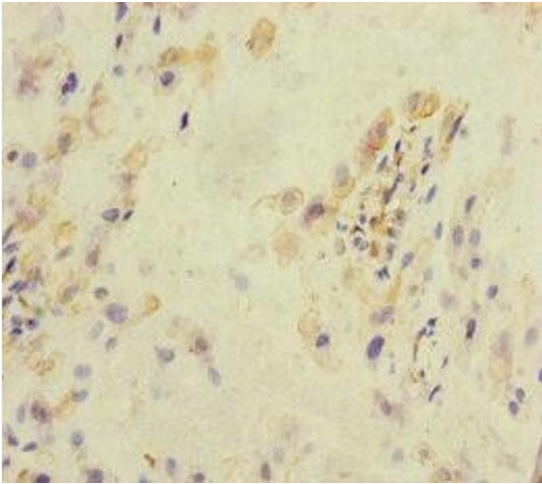
Storage Comment: Upon receipt, store at -20°C or -80°C. Avoid repeated freeze.

## Images



### Immunohistochemistry

**Image 1.** Immunohistochemistry of paraffin-embedded human gastric cancer using ABIN7157289 at dilution of 1:100



### Immunohistochemistry

**Image 2.** Immunohistochemistry of paraffin-embedded human placenta tissue using ABIN7157289 at dilution of 1:100